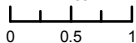


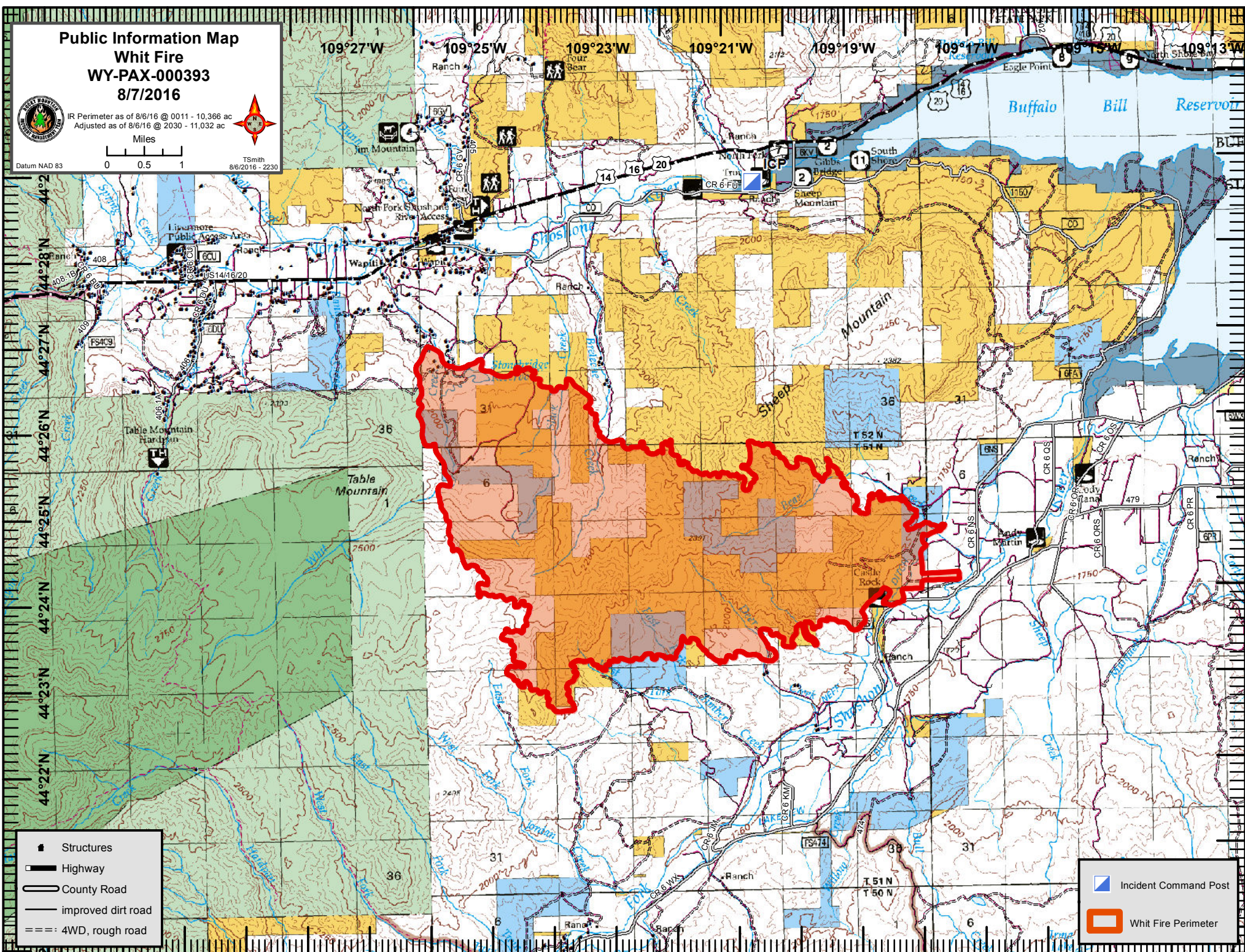
Public Information Map
Whit Fire
WY-PAX-000393
8/7/2016



IR Perimeter as of 8/6/16 @ 0011 - 10,366 ac
 Adjusted as of 8/6/16 @ 2030 - 11,032 ac



Datum NAD 83
 TSMITH
 8/6/2016 - 2230



- Structures
- Highway
- County Road
- improved dirt road
- 4WD, rough road

- Incident Command Post
- Whit Fire Perimeter

44°