

WHIT FIRE WY-PAX-000393



South Structures 8/7/16

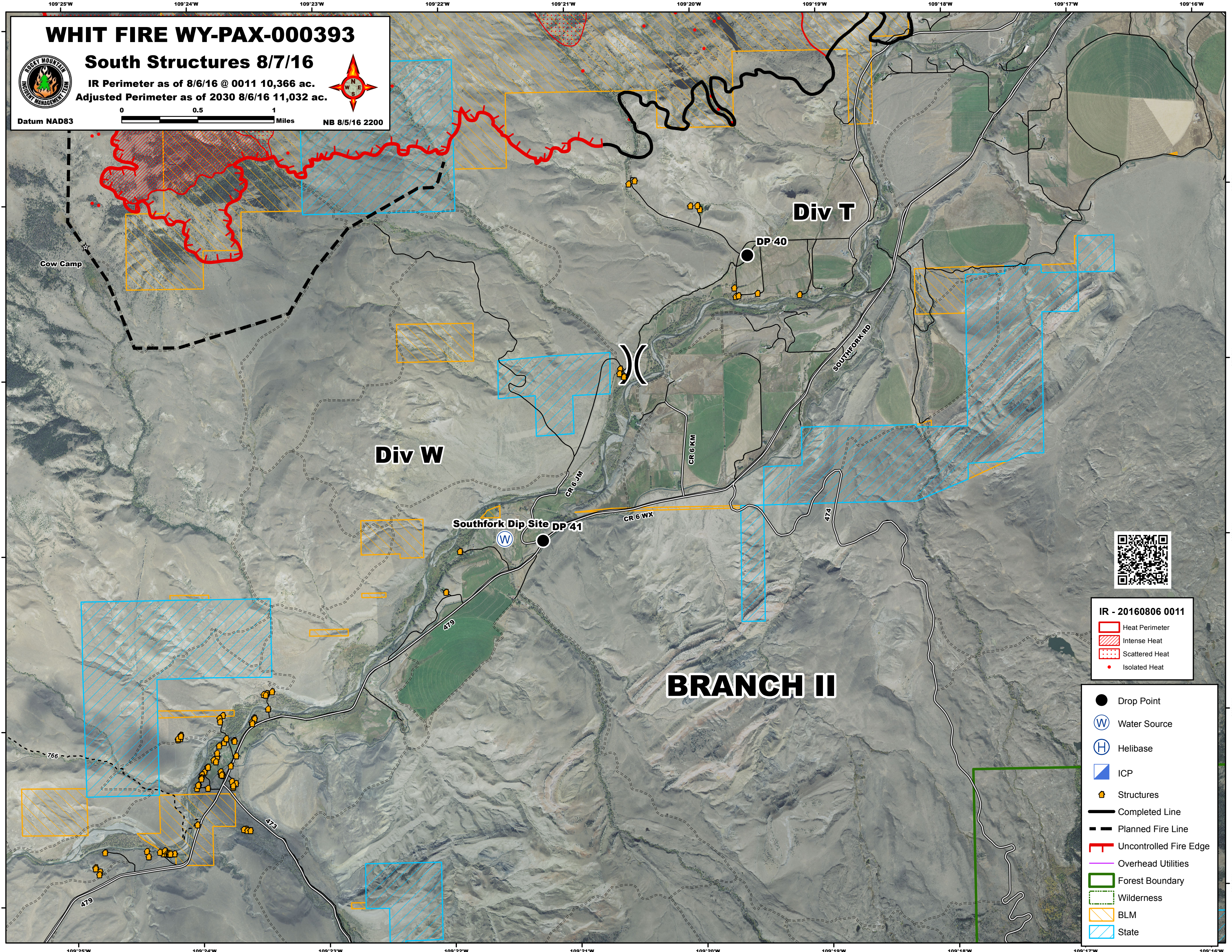
IR Perimeter as of 8/6/16 @ 0011 10,366 ac.
Adjusted Perimeter as of 2030 8/6/16 11,032 ac.



0 0.5 1 Miles

NB 8/5/16 2200

Datum NAD83



IR - 20160806 0011

- Heat Perimeter
- Intense Heat
- Scattered Heat
- Isolated Heat

- Drop Point
- Water Source
- Helibase
- ICP
- Structures
- Completed Line
- Planned Fire Line
- Uncontrolled Fire Edge
- Overhead Utilities
- Forest Boundary
- Wilderness
- BLM
- State