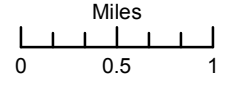


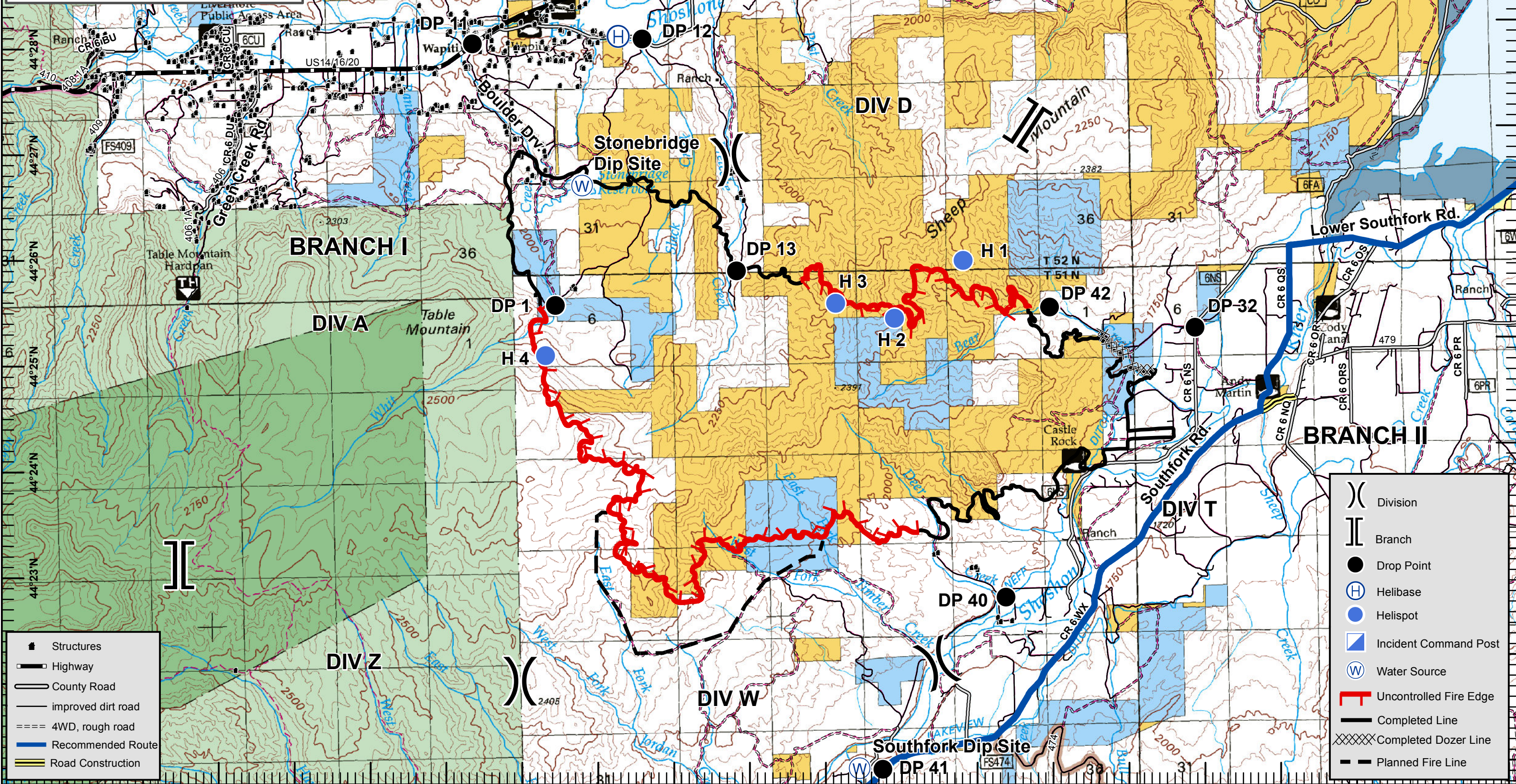
Transportation Map
Whit Fire
WY-PAX-000393
8/7/2016



IR Perimeter as of 8/6/16 @ 0011 - 10,366 ac
 Adjusted as of 8/6/16 @ 2030 - 11,032 ac



TSmith
 8/6/2016 - 2030



- Structures
- Highway
- County Road
- Improved dirt road
- 4WD, rough road
- Recommended Route
- Road Construction

- Division
- Branch
- Drop Point
- Helibase
- Helispot
- Incident Command Post
- Water Source
- Uncontrolled Fire Edge
- Completed Line
- Completed Dozer Line
- Planned Fire Line