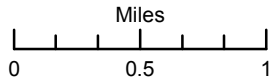


IAP Map Whit Fire WY-PAX-000393 8/8/2016

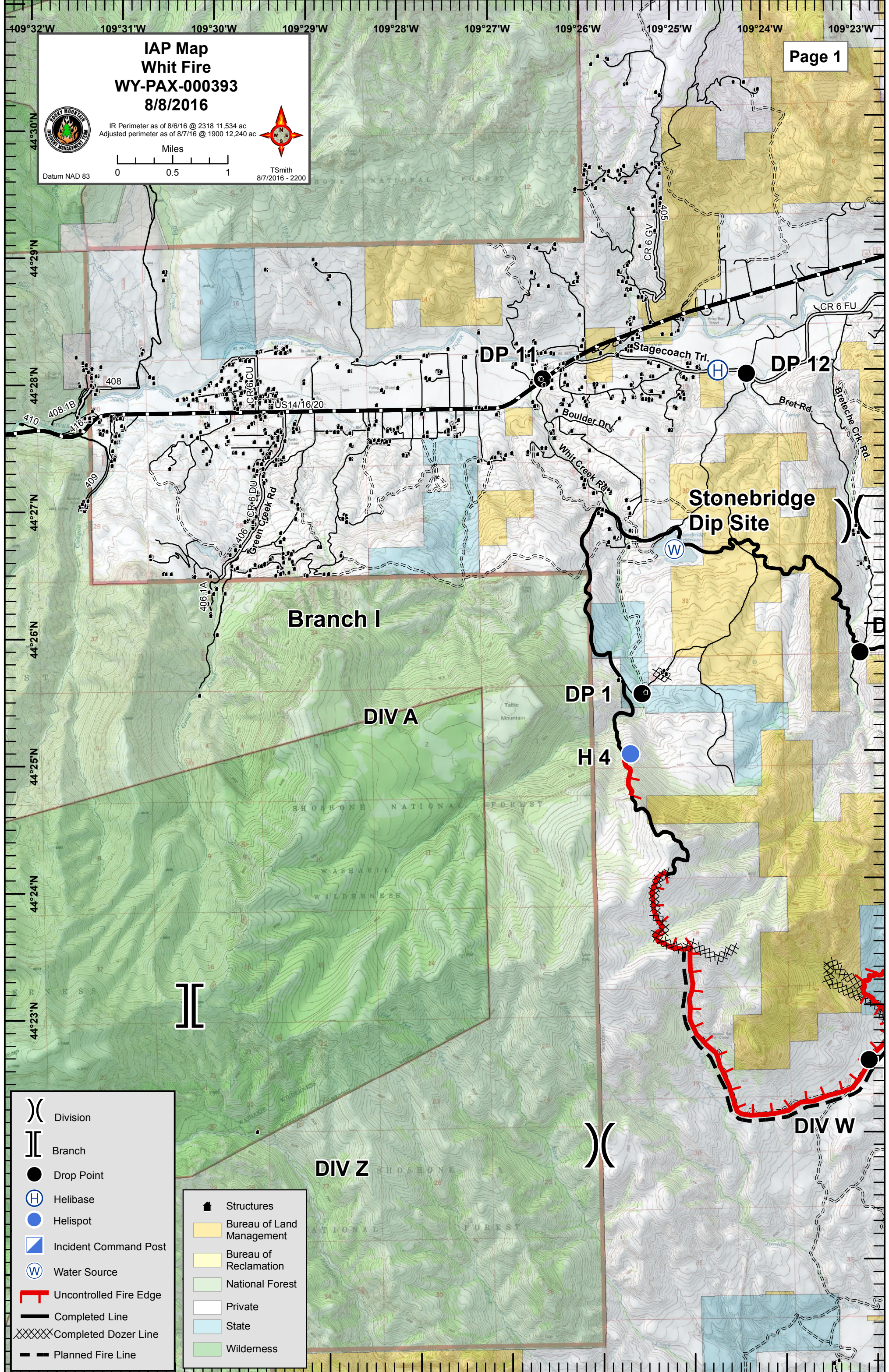


IR Perimeter as of 8/6/16 @ 2318 11,534 ac
Adjusted perimeter as of 8/7/16 @ 1900 12,240 ac



TSmith
8/7/2016 - 2200

Datum NAD 83



II

Branch I

DIV A

DIV Z

DIV W

Stonebridge
Dip Site

DP 11

DP 12

DP 1

H 4

- Division
- Branch
- Drop Point
- Helibase
- Helispot
- Incident Command Post
- Water Source
- Uncontrolled Fire Edge
- Completed Line
- Completed Dozer Line
- Planned Fire Line

- Structures
- Bureau of Land Management
- Bureau of Reclamation
- National Forest
- Private
- State
- Wilderness