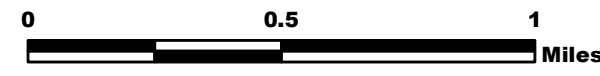


# WHIT FIRE WY-PAX-000393



## North Structures 8/8/16

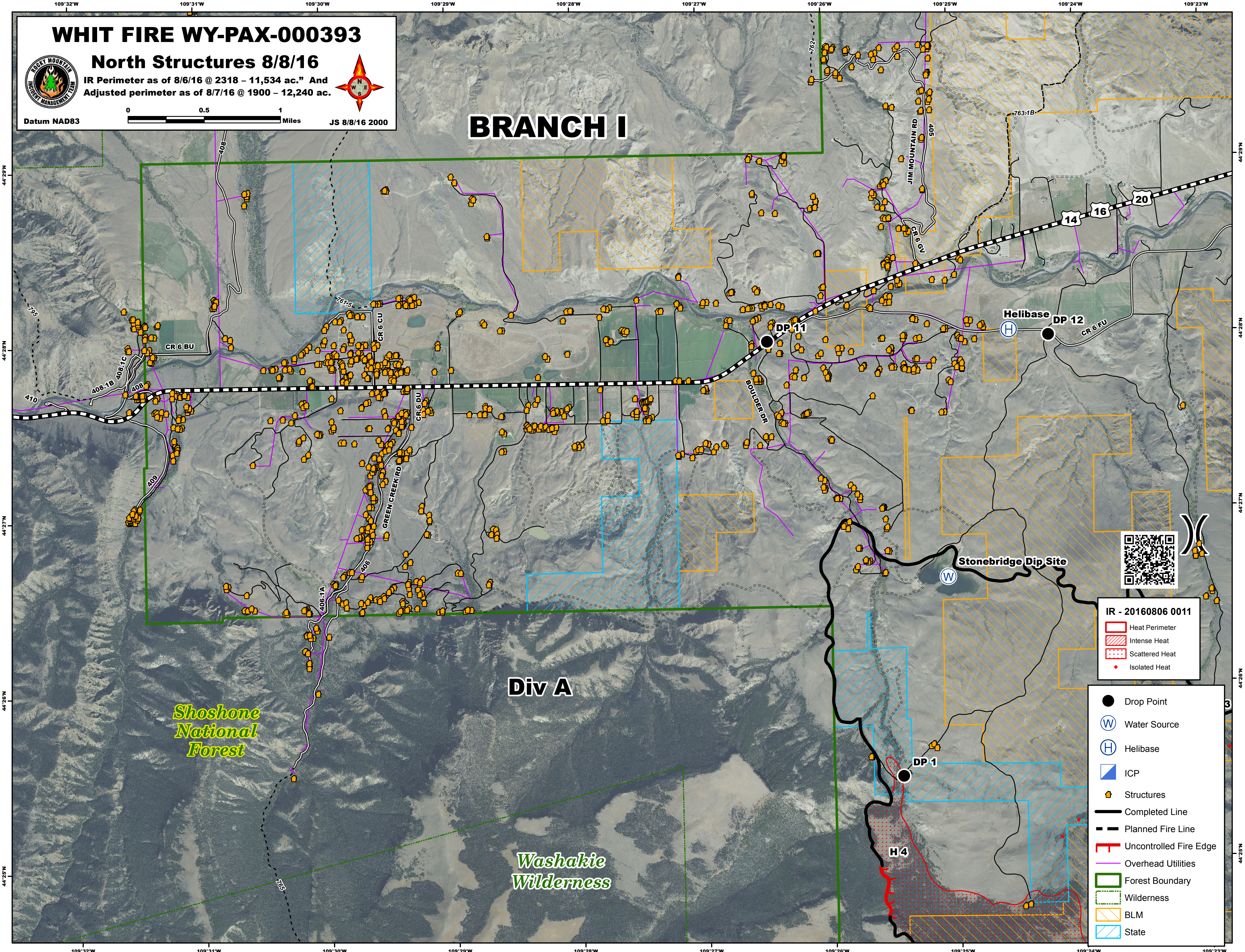
IR Perimeter as of 8/6/16 @ 2318 - 11,534 ac. And Adjusted perimeter as of 8/7/16 @ 1900 - 12,240 ac.



JS 8/8/16 2000

Datum NAD83

# BRANCH I



*Shoshone National Forest*

**Div A**

*Washakie Wilderness*

**IR - 20160806 0011**

- Heat Perimeter
- Intense Heat
- Scattered Heat
- Isolated Heat

- Drop Point
- Water Source
- Helibase
- ICP
- Structures
- Completed Line
- Planned Fire Line
- Uncontrolled Fire Edge
- Overhead Utilities
- Forest Boundary
- Wilderness
- BLM
- State



Helibase DP 12

Stonebridge Dip Site

DP 11

DP 1

H 4

CR 6 BU

CR 6 CU

CR 6 DU

CR 6 DU

CR 6 DU

CR 6 DU

CR 6 DU

CR 6 DU

CR 6 DU

CR 6 DU

CR 6 DU

CR 6 DU

CR 6 DU

CR 6 DU

CR 6 DU

CR 6 DU

CR 6 DU

CR 6 DU

JIM MOUNTAIN RD

CR 6 GU

BOULDER DR

GREEN CREEK RD

408-1B

408-1C

408

409

406-1A

406

406

406

406

406

406

406

406

406

406

406

406

406

406

44°29'N

44°28'N

44°27'N

44°26'N

44°25'N

44°24'N

44°23'N

44°22'N

44°21'N

44°20'N

44°19'N

44°18'N

44°17'N

44°16'N

109°32'W

109°31'W

109°30'W

109°29'W

109°28'W

109°27'W

109°26'W

109°25'W

109°24'W

109°23'W

109°22'W

109°21'W

109°20'W

109°19'W

109°18'W

109°17'W

109°16'W

109°15'W

109°14'W

109°13'W

109°12'W