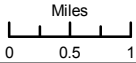


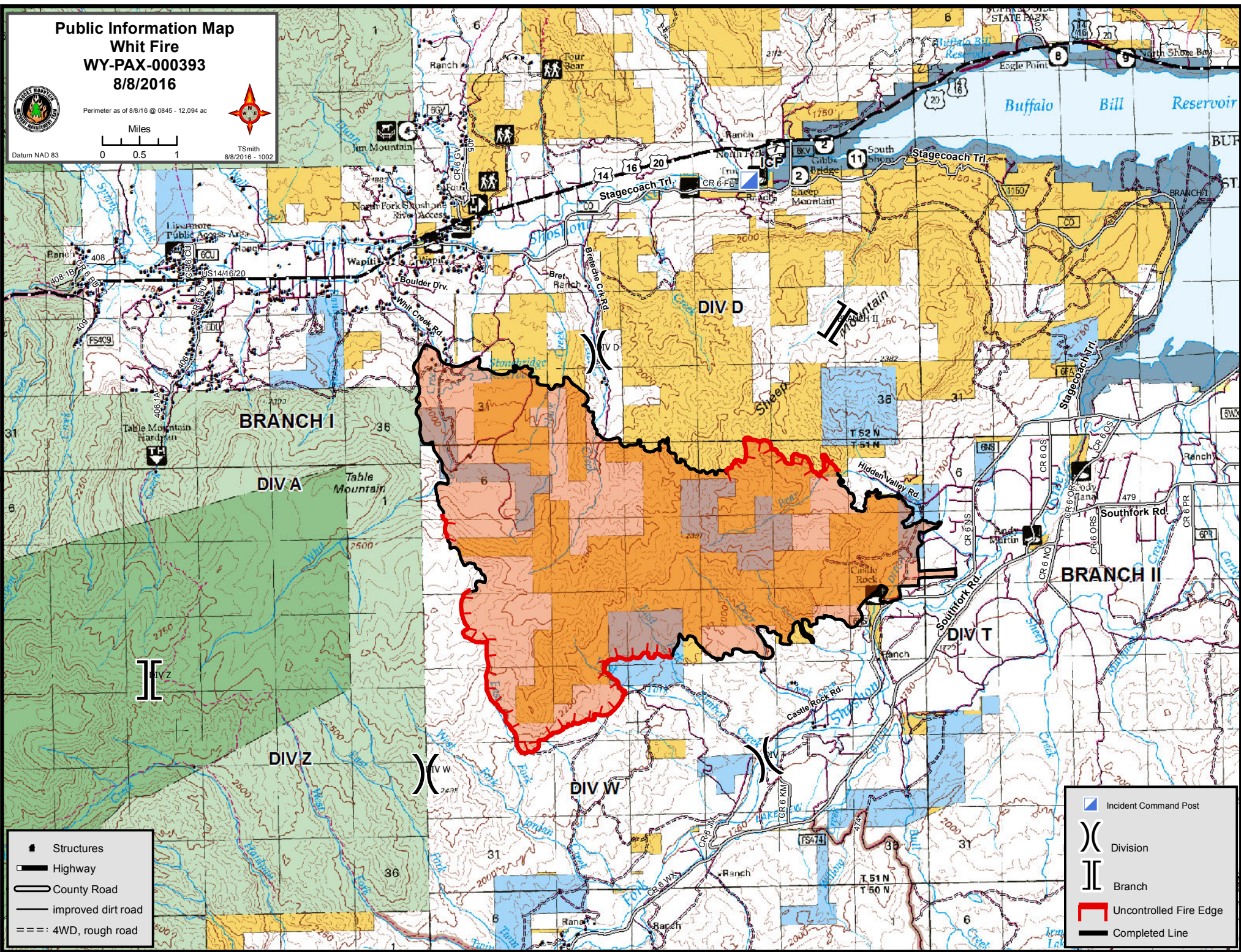
**Public Information Map  
Whit Fire  
WY-PAX-000393  
8/8/2016**

Perimeter as of 8/8/16 @ 0845 - 12,094 ac



Datum NAD 83

TSmith  
8/8/2016 - 1002



- Structures
- Highway
- County Road
- improved dirt road
- 4WD, rough road

- Incident Command Post
- Division
- Branch
- Uncontrolled Fire Edge
- Completed Line