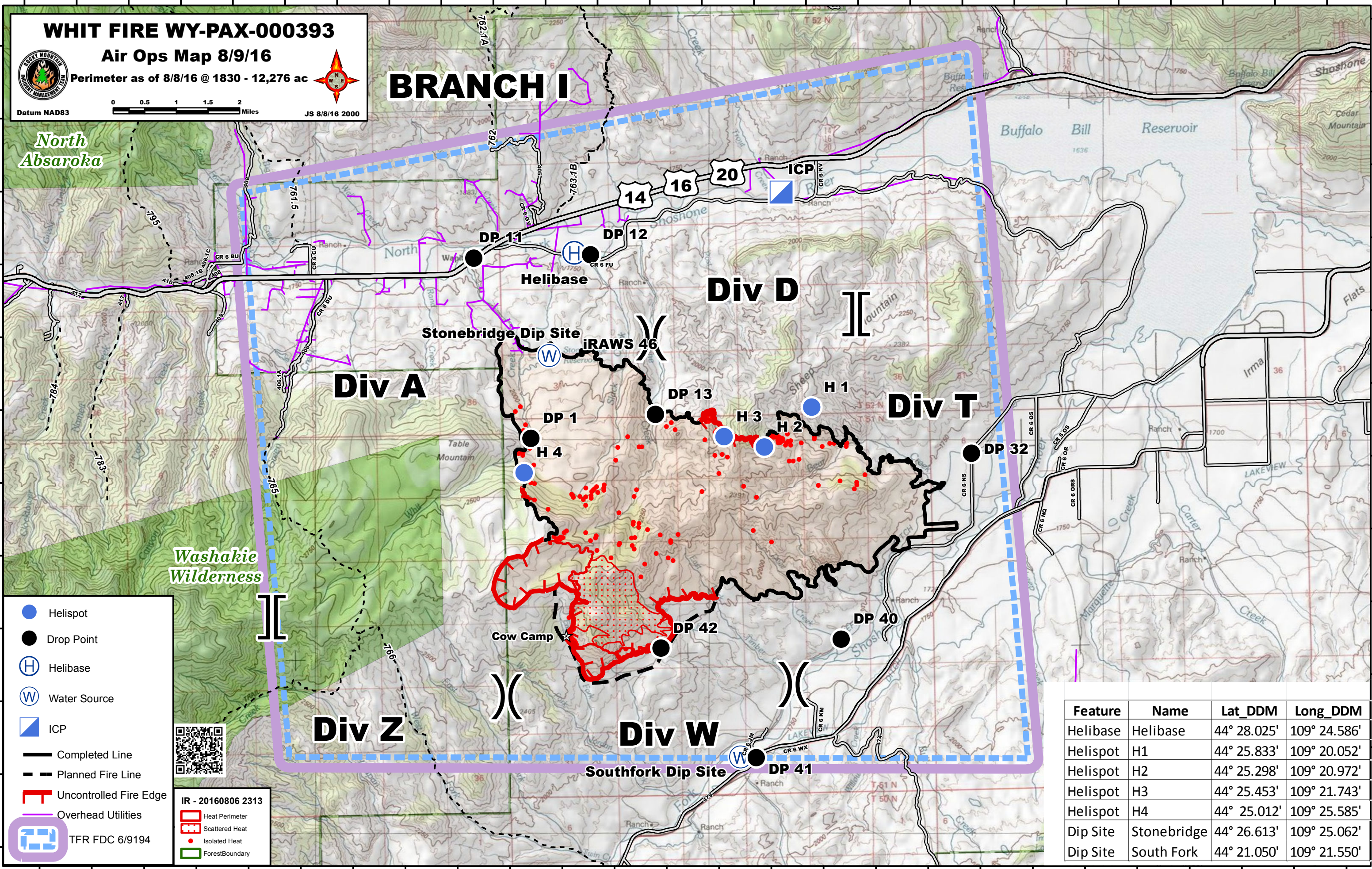


109°35'W 109°34'W 109°33'W 109°32'W 109°31'W 109°30'W 109°29'W 109°28'W 109°27'W 109°26'W 109°25'W 109°24'W 109°23'W 109°22'W 109°21'W 109°20'W 109°19'W 109°18'W 109°17'W 109°16'W 109°15'W 109°14'W 109°13'W 109°12'W 109°11'W 109°10'W



WHIT FIRE WY-PAX-000393
Air Ops Map 8/9/16
 Perimeter as of 8/8/16 @ 1830 - 12,276 ac

Datum NAD83 JS 8/8/16 2000

0 0.5 1 1.5 2 Miles

BRANCH I

Div A

Div D

Div T

Div Z

Div W

- Helispot
- Drop Point
- H Helibase
- W Water Source
- ▣ ICP
- Completed Line
- Planned Fire Line
- Uncontrolled Fire Edge
- Overhead Utilities
- TFR FDC 6/9194

IR - 20160806 2313

- Heat Perimeter
- Scattered Heat
- Isolated Heat
- Forest Boundary

Feature	Name	Lat_DDM	Long_DDM
Helibase	Helibase	44° 28.025'	109° 24.586'
Helispot	H1	44° 25.833'	109° 20.052'
Helispot	H2	44° 25.298'	109° 20.972'
Helispot	H3	44° 25.453'	109° 21.743'
Helispot	H4	44° 25.012'	109° 25.585'
Dip Site	Stonebridge	44° 26.613'	109° 25.062'
Dip Site	South Fork	44° 21.050'	109° 21.550'

109°35'W 109°34'W 109°33'W 109°32'W 109°31'W 109°30'W 109°29'W 109°28'W 109°27'W 109°26'W 109°25'W 109°24'W 109°23'W 109°22'W 109°21'W 109°20'W 109°19'W 109°18'W 109°17'W 109°16'W 109°15'W 109°14'W 109°13'W 109°12'W 109°11'W 109°10'W

44°31'N
44°30'N
44°29'N
44°28'N
44°27'N
44°26'N
44°25'N
44°24'N
44°23'N
44°22'N
44°21'N
44°20'N

44°31'N
44°30'N
44°29'N
44°28'N
44°27'N
44°26'N
44°25'N
44°24'N
44°23'N
44°22'N
44°21'N
44°20'N