

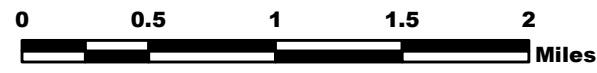
WHIT FIRE WY-PAX-000393

Operations Map 8/9/16

Perimeter as of 8/8/16 @ 1830 - 12,276 ac.



Datum NAD83



NB 8/9/16 0500

BRANCH I

Div D

II

Div T

Div A

Shoshone National Forest

Washakie Wilderness

III

Div Z

Div W

BRANCH II

- Helispot
- Drop Point
- ⊕ Water Source
- ⊕ Helibase
- WX Mobile Weather Unit
- ▢ ICP
- Structures
- XXXXX Completed Dozer Line
- Completed Line
- - - Planned Fire Line
- ┌ Uncontrolled Fire Edge
- Overhead Utilities
- ▭ Forest Boundary
- ▭ Wilderness
- ▭ BLM
- ▭ State

IR - 20160808 0008

- ▭ Intense Heat
- ▭ Scattered Heat
- Isolated Heat

