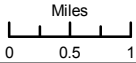


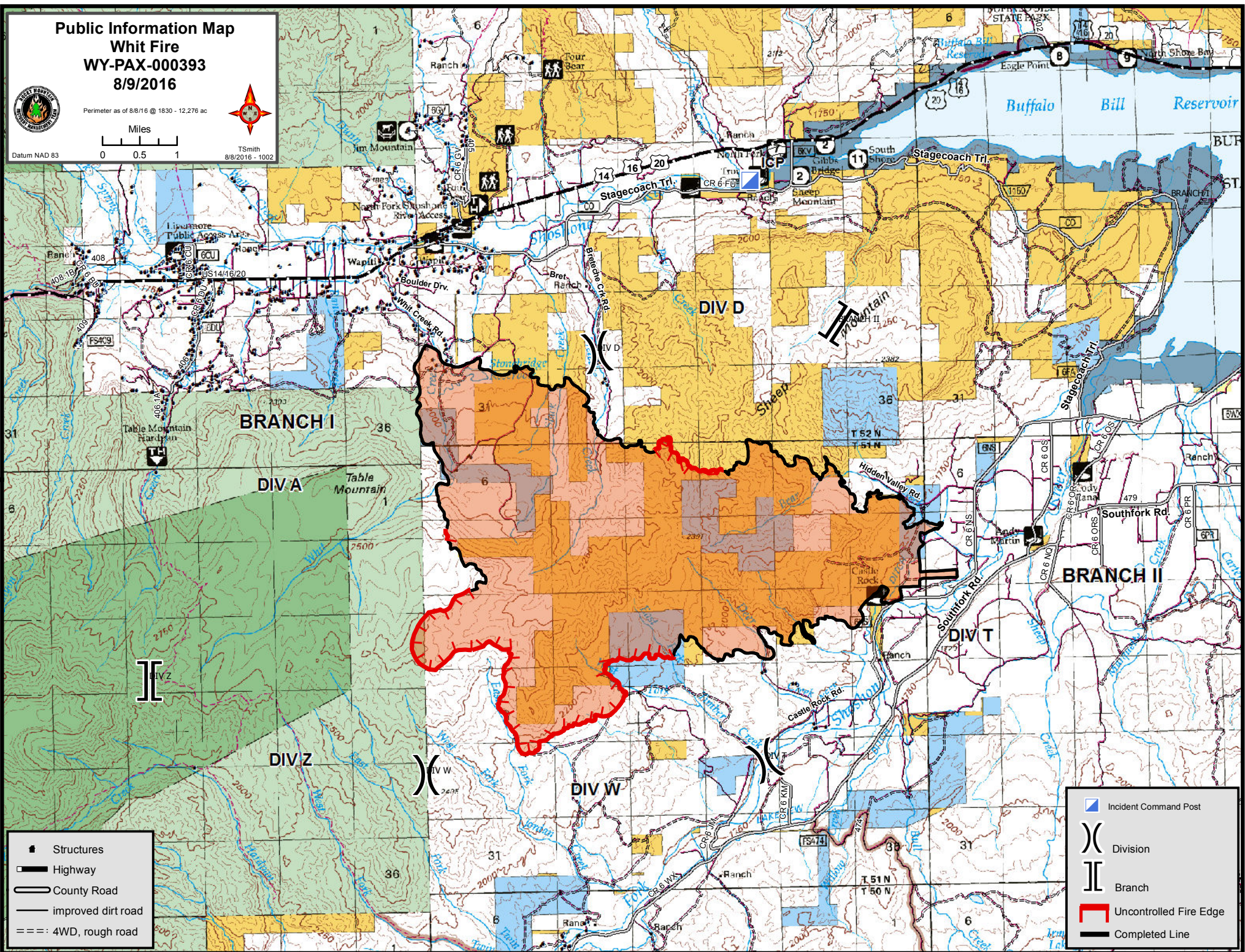
**Public Information Map
Whit Fire
WY-PAX-000393
8/9/2016**

Perimeter as of 8/8/16 @ 1830 - 12,276 ac



Datum NAD 83

TSmith
8/8/2016 - 1002



- Structures
- Highway
- County Road
- improved dirt road
- 4WD, rough road

- Incident Command Post
- Division
- Branch
- Uncontrolled Fire Edge
- Completed Line