

WHIT FIRE WY-PAX-000393

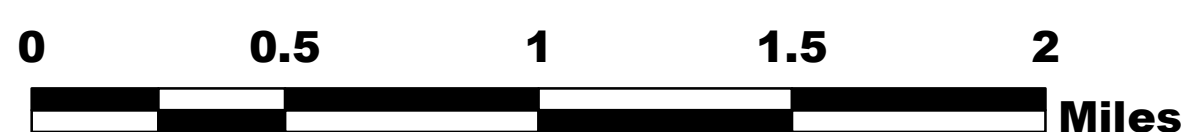


Briefing Map 8/10/16

Perimeter as of 8/8/16 @ 1830 - 12,276 ac.



Datum NAD83



NB 8/9/16 2130

BRANCH I

Div D

Div A

Div T

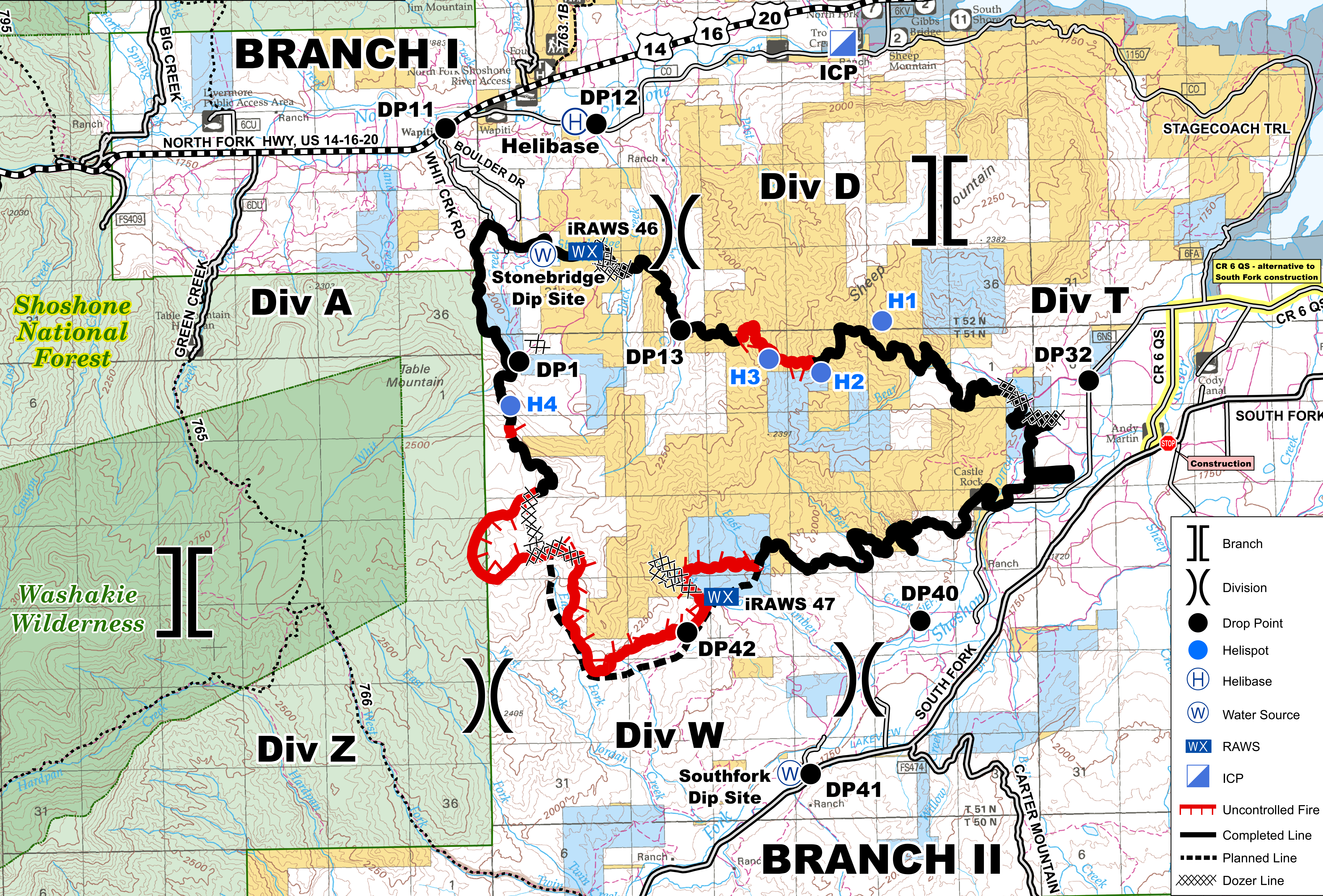
Div W

Div Z

BRANCH II

Shoshone National Forest

Washakie Wilderness



- [] Branch
- () Division
- Drop Point
- Helispot
- ⊕ Helibase
- ⊕ Water Source
- WX RAWs
- ▢ ICP
- ▬ Uncontrolled Fire
- ▬ Completed Line
- ▬▬▬ Planned Line
- XXXXX Dozer Line