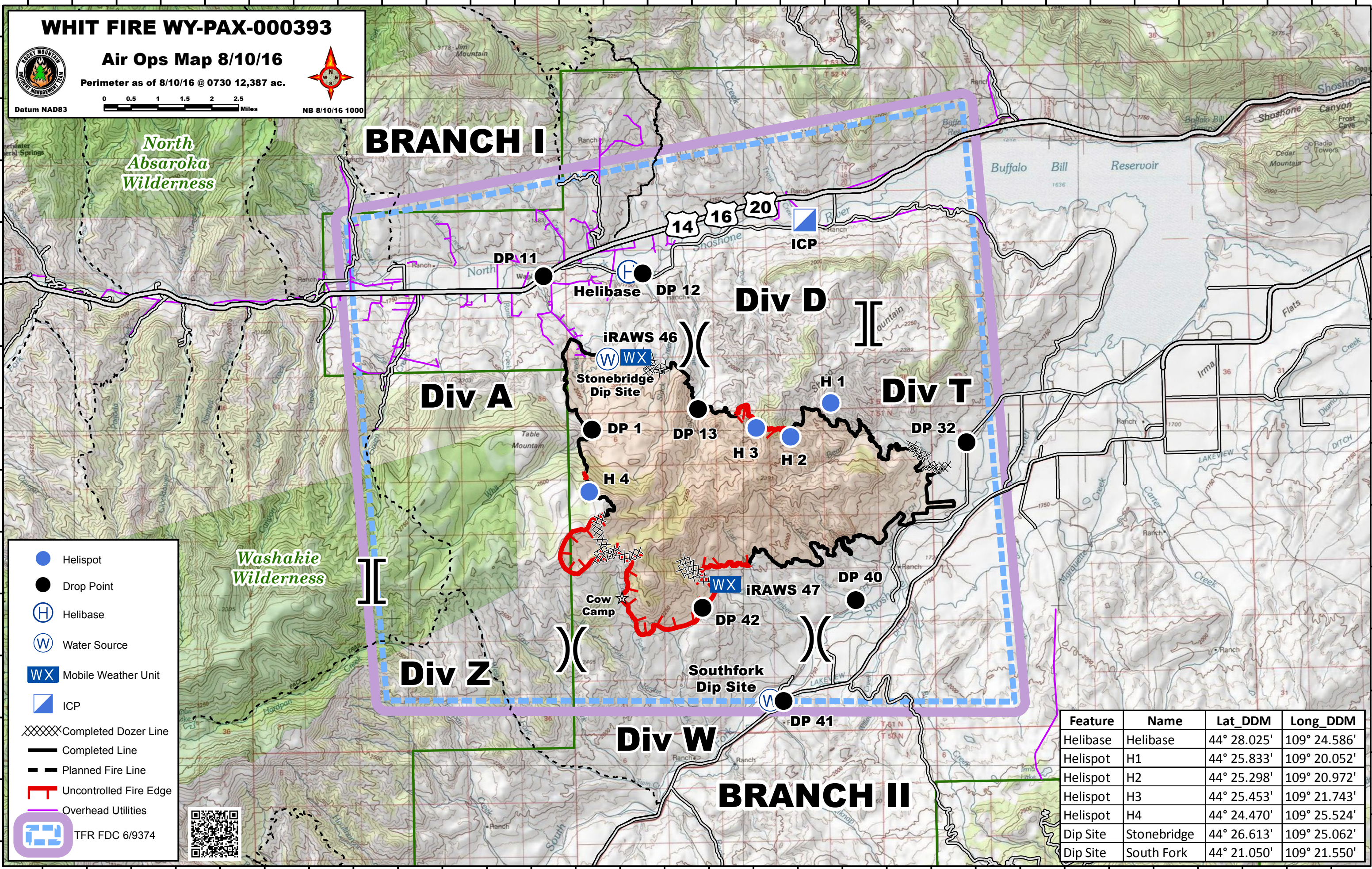


109°38'W 109°37'W 109°36'W 109°35'W 109°34'W 109°33'W 109°32'W 109°31'W 109°30'W 109°29'W 109°28'W 109°27'W 109°26'W 109°25'W 109°24'W 109°23'W 109°22'W 109°21'W 109°20'W 109°19'W 109°18'W 109°17'W 109°16'W 109°15'W 109°14'W 109°13'W 109°12'W 109°11'W 109°10'W 109°9'W 109°8'W



WHIT FIRE WY-PAX-000393

Air Ops Map 8/10/16

Perimeter as of 8/10/16 @ 0730 12,387 ac.

Datum NAD83

NB 8/10/16 1000

0 0.5 1 1.5 2 2.5 Miles

- Helispot
- Drop Point
- H Helibase
- W Water Source
- WX Mobile Weather Unit
- ▣ ICP
- XXXXX Completed Dozer Line
- Completed Line
- - - Planned Fire Line
- ┌ Uncontrolled Fire Edge
- Overhead Utilities
- TFR TFR FDC 6/9374



Feature	Name	Lat_DDM	Long_DDM
Helibase	Helibase	44° 28.025'	109° 24.586'
Helispot	H1	44° 25.833'	109° 20.052'
Helispot	H2	44° 25.298'	109° 20.972'
Helispot	H3	44° 25.453'	109° 21.743'
Helispot	H4	44° 24.470'	109° 25.524'
Dip Site	Stonebridge	44° 26.613'	109° 25.062'
Dip Site	South Fork	44° 21.050'	109° 21.550'

109°38'W 109°37'W 109°36'W 109°35'W 109°34'W 109°33'W 109°32'W 109°31'W 109°30'W 109°29'W 109°28'W 109°27'W 109°26'W 109°25'W 109°24'W 109°23'W 109°22'W 109°21'W 109°20'W 109°19'W 109°18'W 109°17'W 109°16'W 109°15'W 109°14'W 109°13'W 109°12'W 109°11'W 109°10'W 109°9'W