

WHIT FIRE WY-PAX-000393

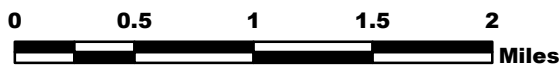


Briefing Map 8/14/16

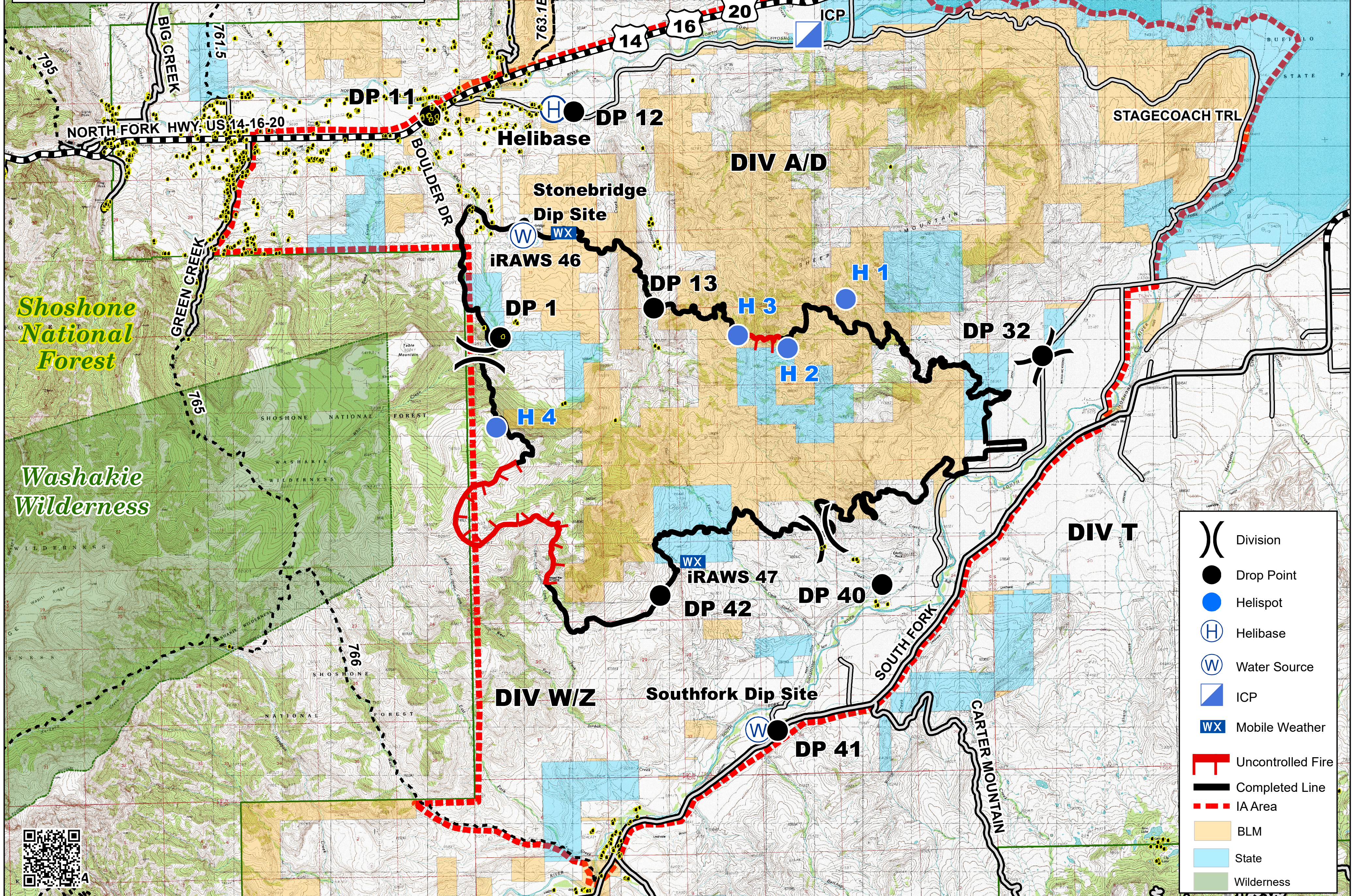
Perimeter as of 8/10/16 @ 1200 - 12,387 ac.



Datum NAD83



BK 8/13/16 1830



Shoshone National Forest

Washakie Wilderness

	Division
	Drop Point
	Helispot
	Helibase
	Water Source
	ICP
	Mobile Weather
	Uncontrolled Fire
	Completed Line
	IA Area
	BLM
	State
	Wilderness

