

WHIT FIRE WY-PAX-000393

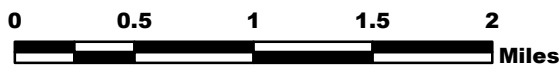
Situation Map 8/14/16

Perimeter as of 8/10/16 @ 1200 - 12,387 ac.

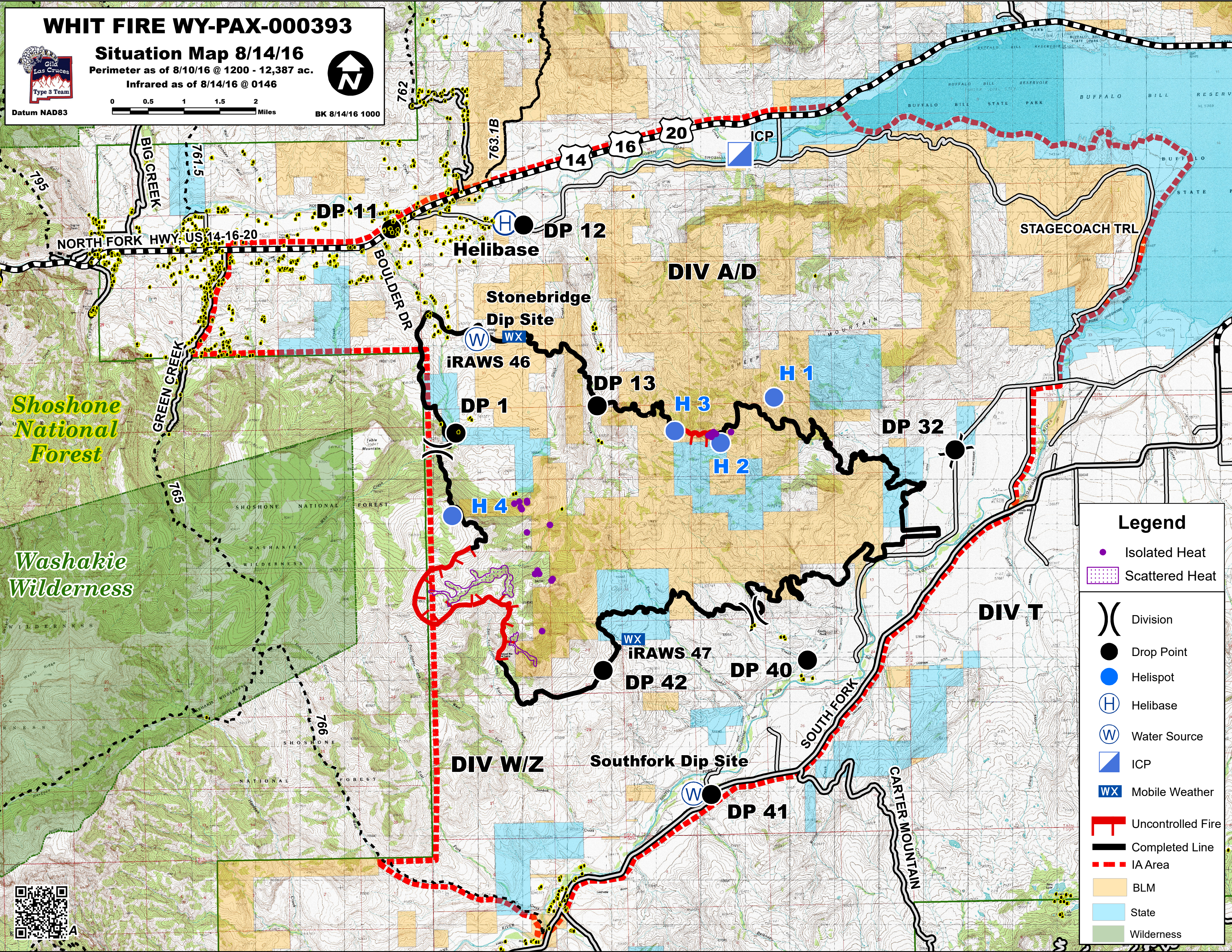
Infrared as of 8/14/16 @ 0146



Datum NAD83



BK 8/14/16 1000



Legend

- Isolated Heat
- Scattered Heat
- () Division
- Drop Point
- Helispot
- (H) Helibase
- (W) Water Source
- ICP
- WX Mobile Weather
- Uncontrolled Fire
- Completed Line
- - - IA Area
- BLM
- State
- Wilderness

