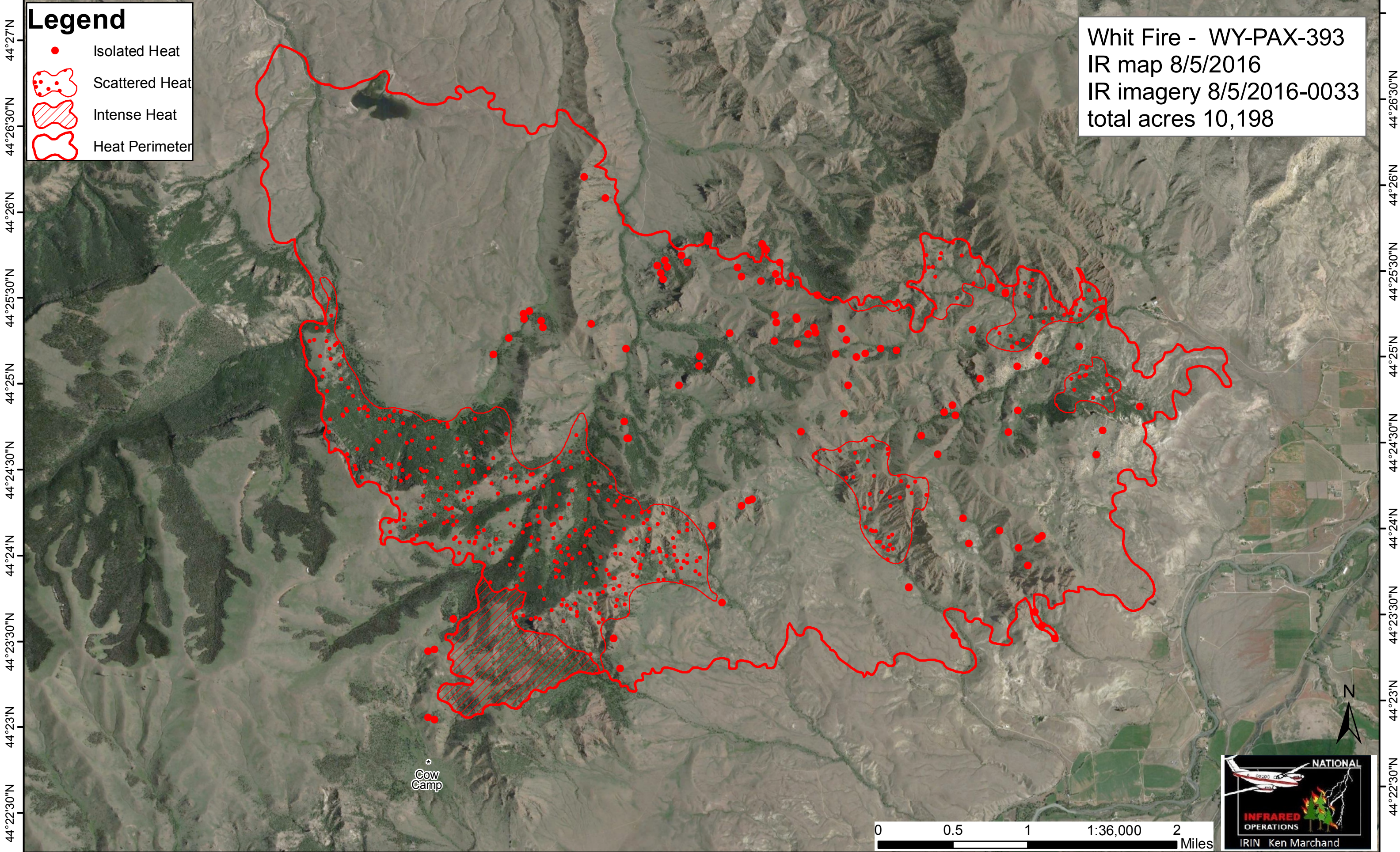


109°27'W 109°26'W 109°25'W 109°24'W 109°23'W 109°22'W 109°21'W 109°20'W 109°19'W 109°18'W 109°17'W

Legend

- Isolated Heat
- Scattered Heat
- Intense Heat
- Heat Perimeter

Whit Fire - WY-PAX-393
 IR map 8/5/2016
 IR imagery 8/5/2016-0033
 total acres 10,198



44°27'N
44°26'30"N
44°26'N
44°25'30"N
44°25'N
44°24'30"N
44°24'N
44°23'30"N
44°23'N
44°22'30"N

44°26'30"N
44°26'N
44°25'30"N
44°25'N
44°24'30"N
44°24'N
44°23'30"N
44°23'N
44°22'30"N

109°27'30"W 109°26'30"W 109°25'30"W 109°24'30"W 109°23'30"W 109°22'30"W 109°21'30"W 109°20'30"W 109°19'30"W 109°18'30"W 109°17'30"W

0 0.5 1 1:36,000 2 Miles



*
Cow
Camp