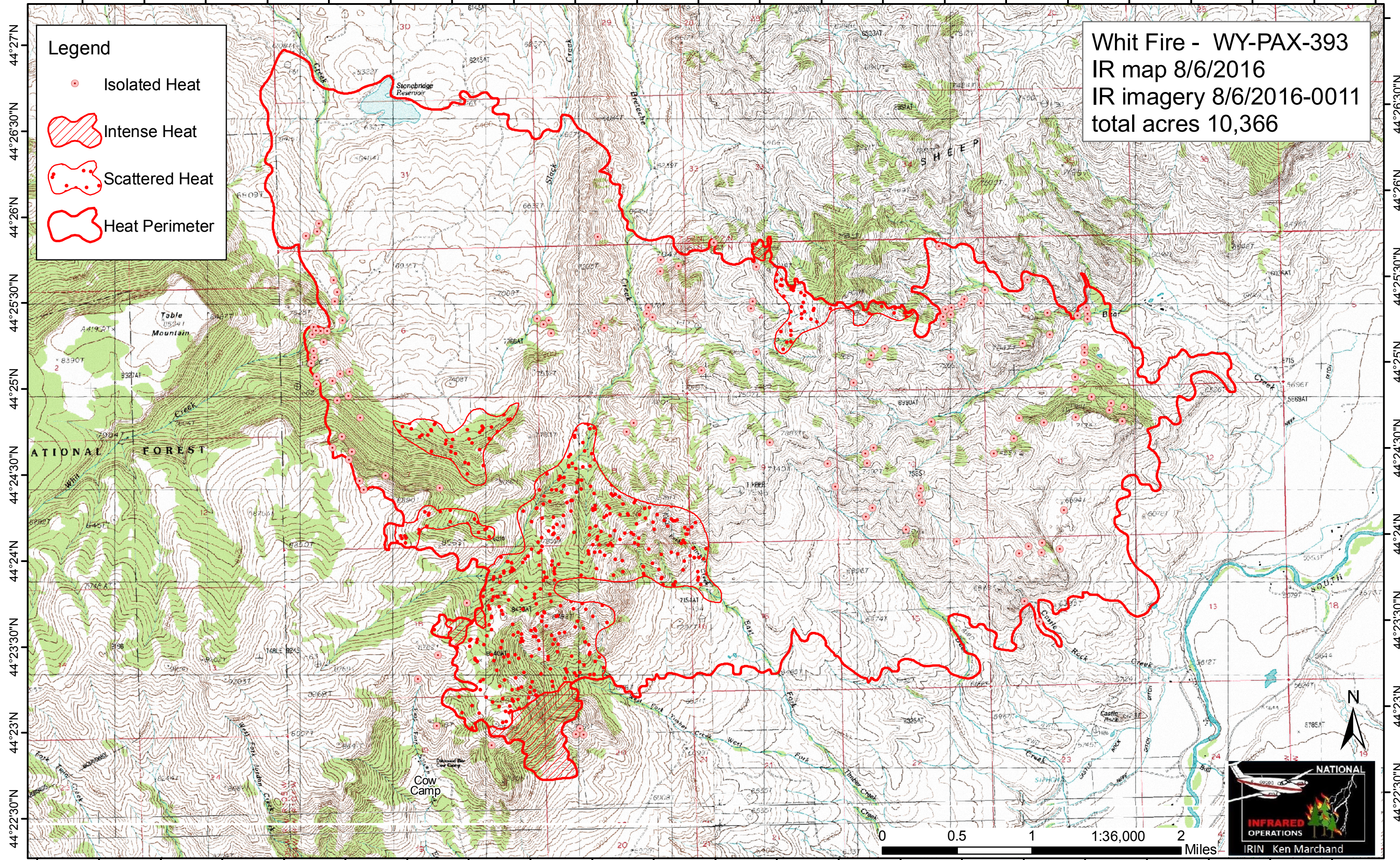






109°27'W 109°26'W 109°25'W 109°24'W 109°23'W 109°22'W 109°21'W 109°20'W 109°19'W 109°18'W 109°17'W



Legend

-  Isolated Heat
-  Intense Heat
-  Scattered Heat
-  Heat Perimeter

Whit Fire - WY-PAX-393
 IR map 8/6/2016
 IR imagery 8/6/2016-0011
 total acres 10,366

44°27'N
44°26'30"N
44°26'N
44°25'30"N
44°25'N
44°24'30"N
44°24'N
44°23'30"N
44°23'N
44°22'30"N

44°26'30"N
44°26'N
44°25'30"N
44°25'N
44°24'30"N
44°24'N
44°23'30"N
44°23'N
44°22'30"N

109°27'30"W 109°26'30"W 109°25'30"W 109°24'30"W 109°23'30"W 109°22'30"W 109°21'30"W 109°20'30"W 109°19'30"W 109°18'30"W 109°17'30"W



NATIONAL
INFRARED OPERATIONS
 IRIN Ken Marchand

