

109°26'30"W 109°25'30"W 109°24'30"W 109°23'30"W 109°22'30"W 109°21'30"W 109°20'30"W 109°19'30"W 109°18'30"W 109°17'30"W 109°16'30"W

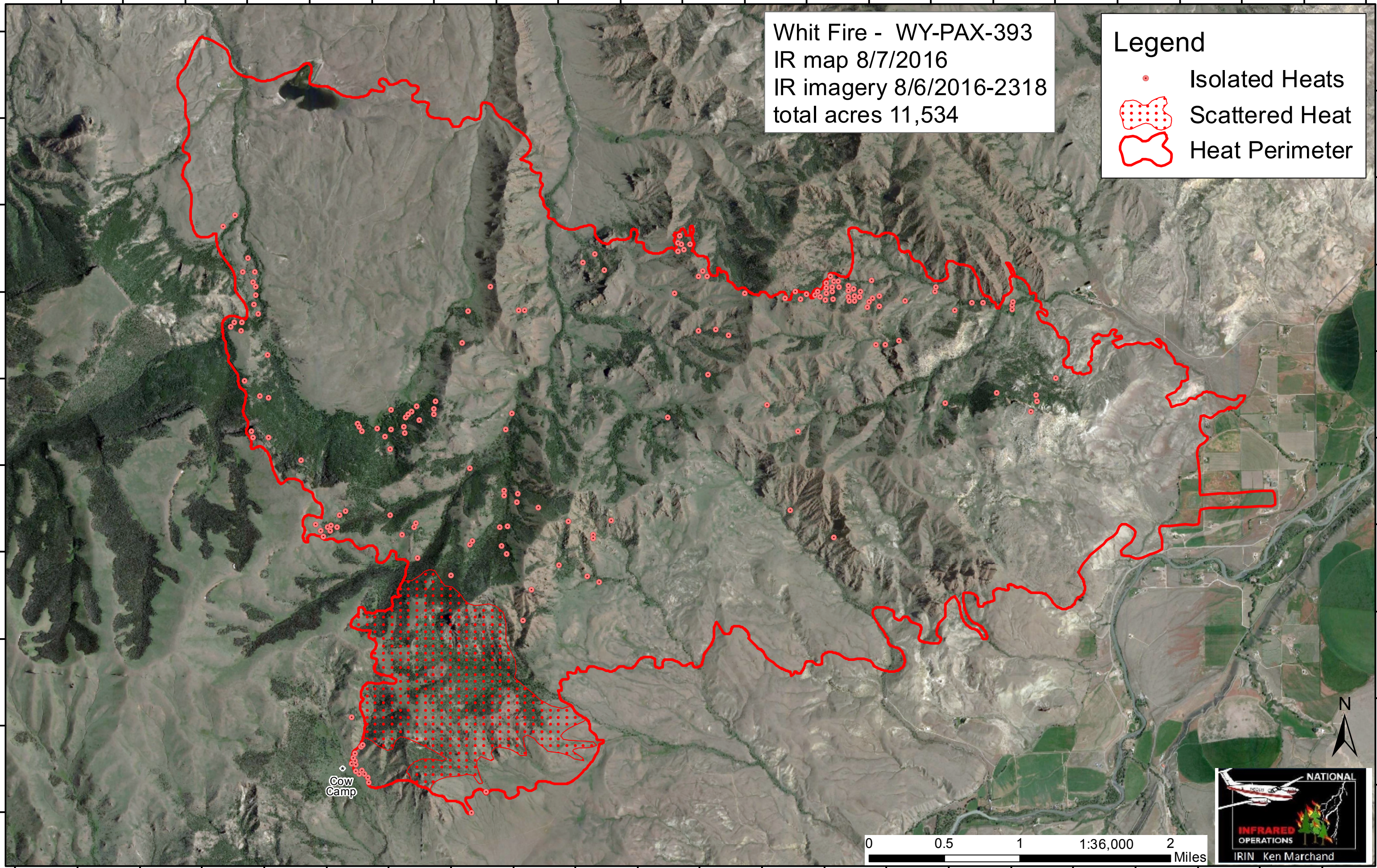
44°27'N
44°26'30"N
44°26'N
44°25'30"N
44°25'N
44°24'30"N
44°24'N
44°23'30"N
44°23'N
44°22'30"N

44°26'30"N
44°26'N
44°25'30"N
44°25'N
44°24'30"N
44°24'N
44°23'30"N
44°23'N
44°22'30"N

Whit Fire - WY-PAX-393
IR map 8/7/2016
IR imagery 8/6/2016-2318
total acres 11,534

Legend

- Isolated Heats
- ◻ Scattered Heat
- ◻ Heat Perimeter



Cow Camp

0 0.5 1 1:36,000 2 Miles



109°27'W 109°26'W 109°25'W 109°24'W 109°23'W 109°22'W 109°21'W 109°20'W 109°19'W 109°18'W 109°17'W