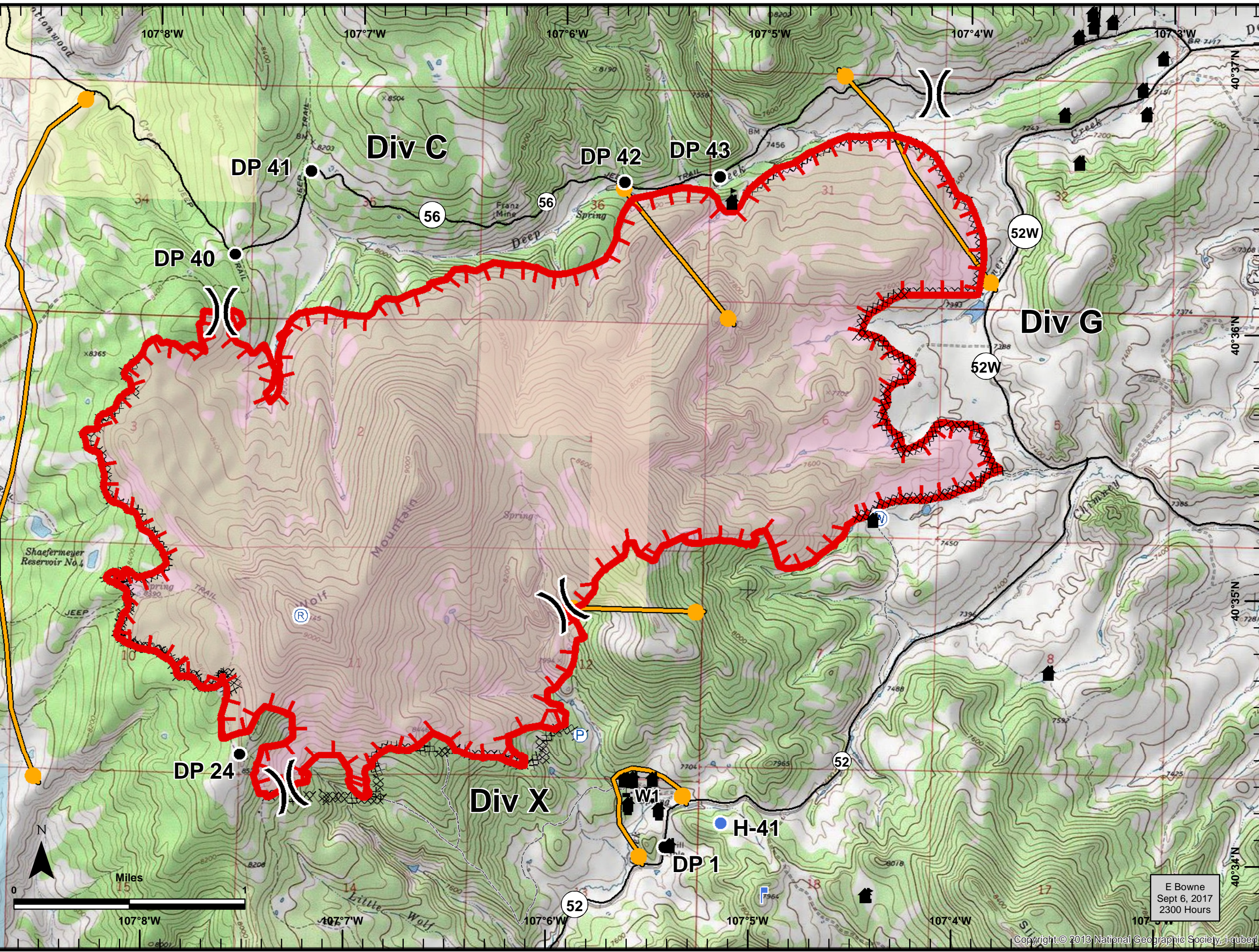


Deep Creek Fire  
CO-RTX-456  
Sept. 8, 2017  
Day Shift

3,795 Acres  
as of 2000 hours  
Sept 7, 2017

- Drop Point
- Helispot
- ▬ Lookout
- Ⓟ Pump
- Ⓡ Repeater
- Ⓜ Water Source
- ⚠ Value at Risk
- ⌋ Division Break
- XXXXXX Completed Dozer Line
- ▬ Uncontrolled Fire Edge
- Management Action Point
- ▬ Wildfire Daily Fire Perimeter
- ▬ BLM
- ▬ CDOW/STATE
- ▬ USFS



E Bowne  
Sept 6, 2017  
2300 Hours