

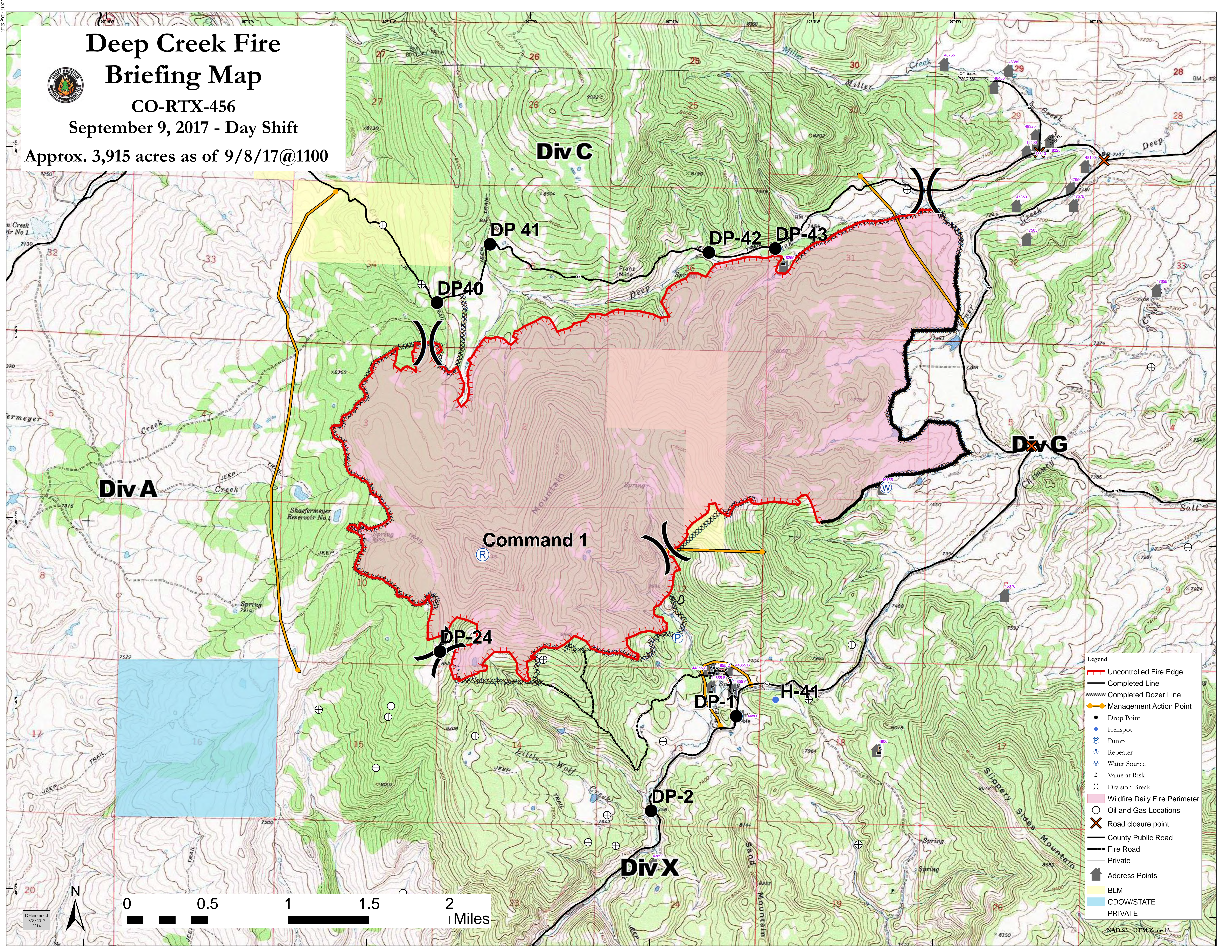
Deep Creek Fire Briefing Map



CO-RTX-456

September 9, 2017 - Day Shift

Approx. 3,915 acres as of 9/8/17@1100



- Uncontrolled Fire Edge
- Completed Line
- Completed Dozer Line
- Management Action Point
- Drop Point
- Helispot
- Pump
- Repeater
- Water Source
- Value at Risk
- Division Break
- Wildfire Daily Fire Perimeter
- Oil and Gas Locations
- Road closure point
- County Public Road
- Fire Road
- Private
- Address Points
- BLM
- CDOW/STATE
- PRIVATE



DI Hammond
9/8/2017
2214

NAD 83 - UTM Zone 13