

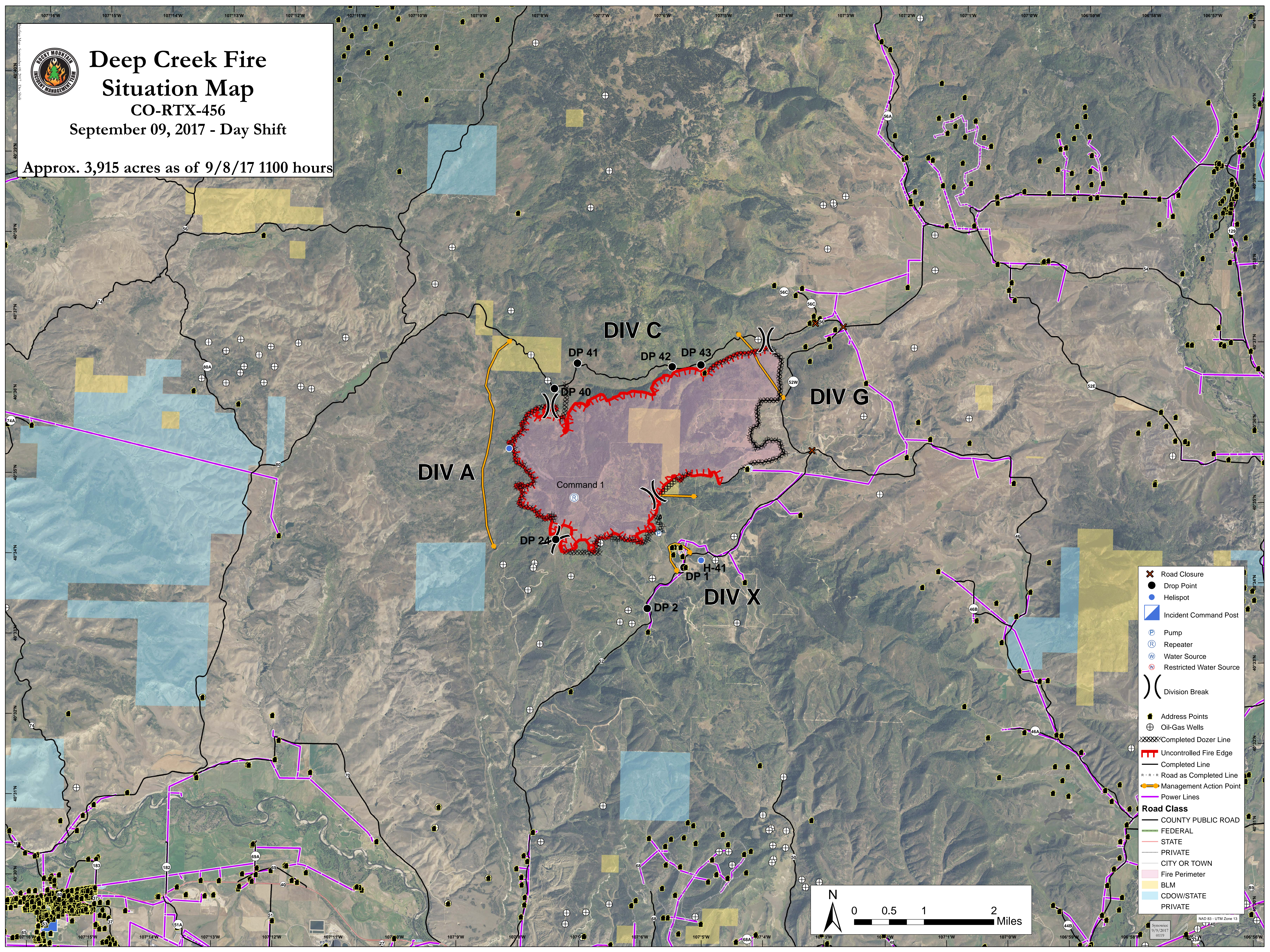


Deep Creek Fire Situation Map

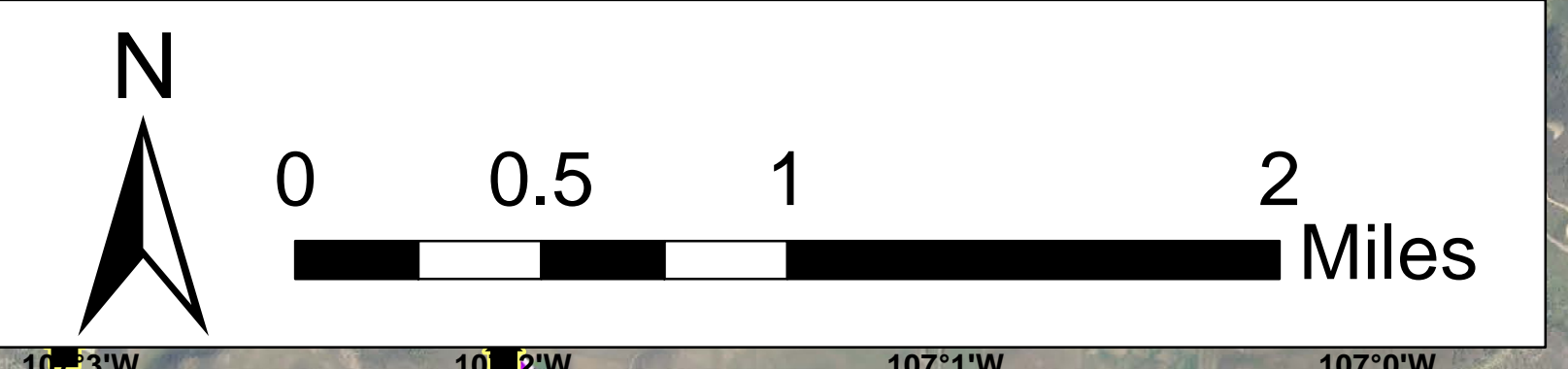
CO-RTX-456

September 09, 2017 - Day Shift

Approx. 3,915 acres as of 9/8/17 1100 hours



- ✘ Road Closure
- Drop Point
- Helispot
- ▣ Incident Command Post
- ⊕ Pump
- ⊕ Repeater
- ⊕ Water Source
- ⊕ Restricted Water Source
-)) Division Break
- 🏠 Address Points
- ⊕ Oil-Gas Wells
- ⊕ Completed Dozer Line
- ▬ Uncontrolled Fire Edge
- ▬ Completed Line
- ▬ Road as Completed Line
- ▬ Management Action Point
- ▬ Power Lines
- Road Class**
- ▬ COUNTY PUBLIC ROAD
- ▬ FEDERAL
- ▬ STATE
- ▬ PRIVATE
- ▬ CITY OR TOWN
- ▬ Fire Perimeter
- ▬ BLM
- ▬ CDOW/STATE
- ▬ PRIVATE



NAD 83 - UTM Zone 13
9/9/2017
0119