

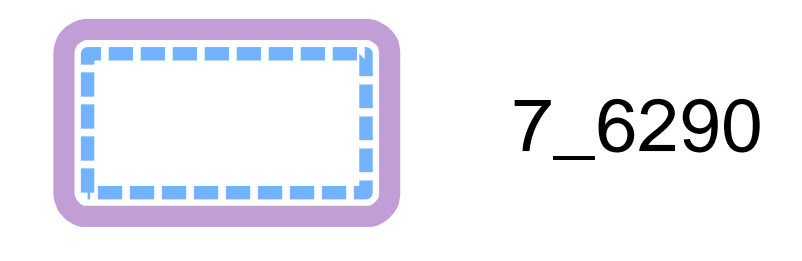
# DEEP CREEK FIRE

CO- RTX-000456

September 09, 2017

Day Shift

## AIR OPS MAP

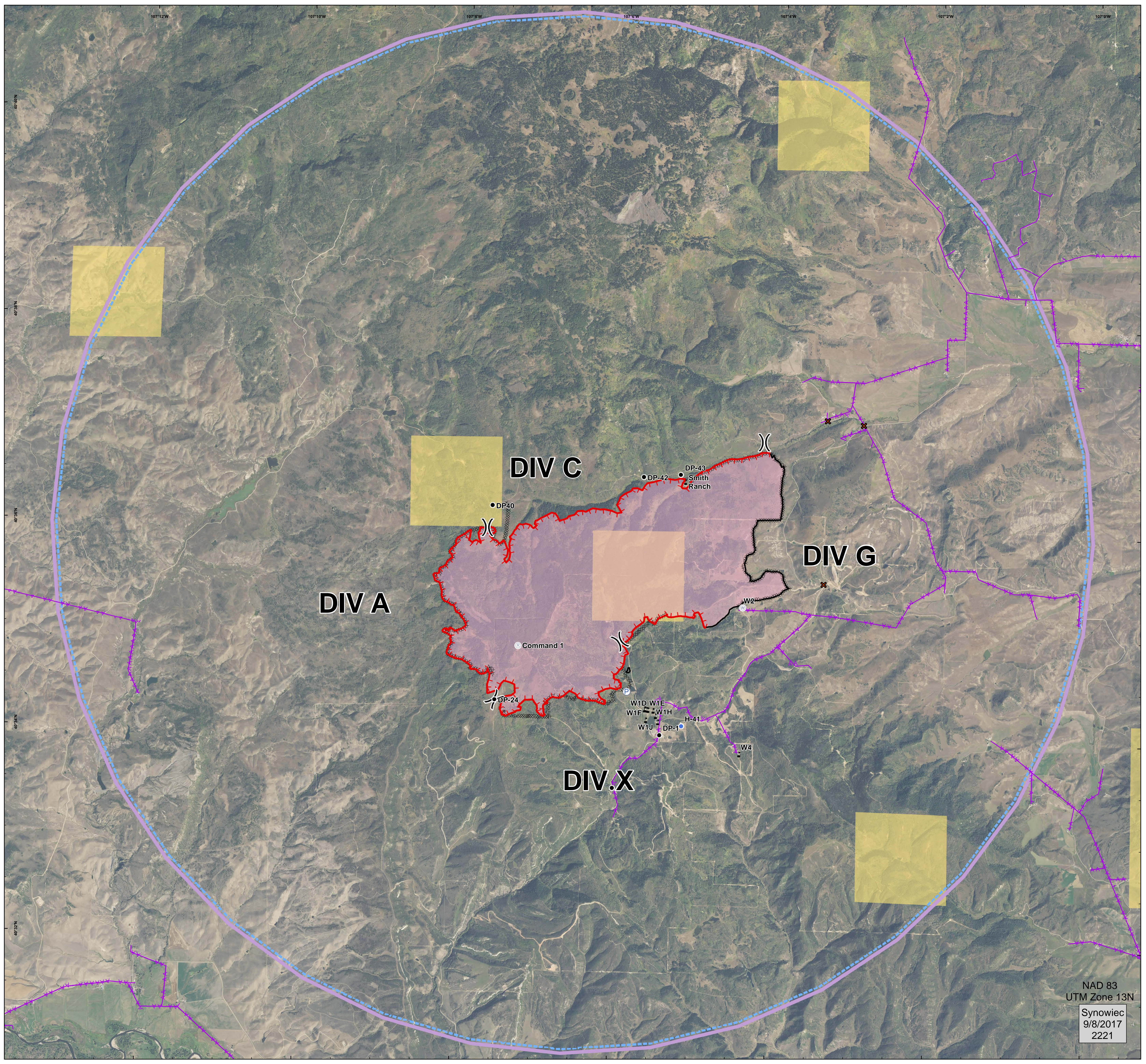
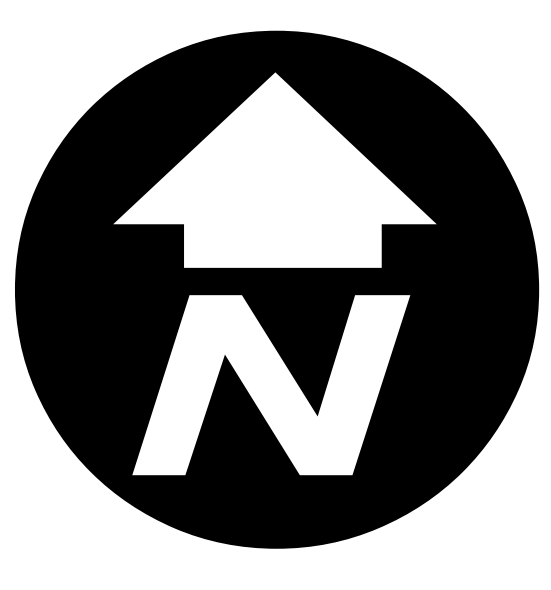
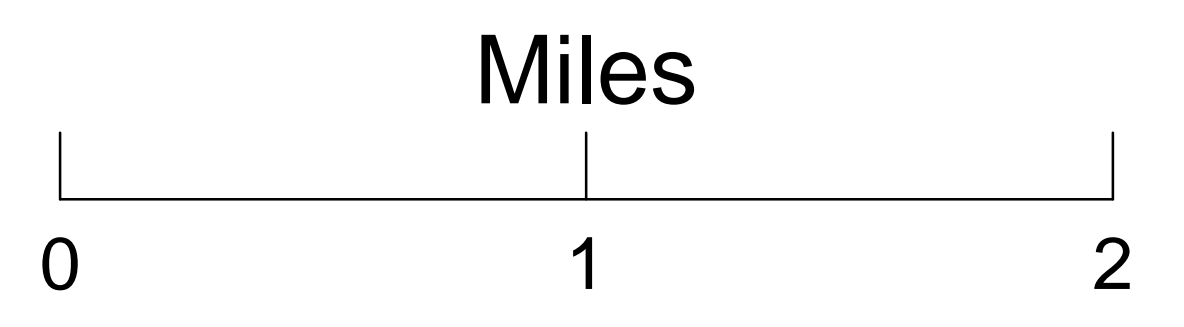


- Uncontrolled Fire Edge
- Completed Line
- Completed Dozer Line
- Road as Completed Line
- Wildfire Daily Fire Perimeter
- Bureau of Land Management
- Road Closure
- Drop Point
- Helispot
- Pump
- Repeater
- Water Source
- Value at Risk
- Division Break

### Retardant Avoidance Areas

- Hydrological Resources

Point	Latitude	Longitude
DP-1	40° 34.026' N	107° 5.423' W
DP-2	40° 33.502' N	107° 6.000' W
DP-24	40° 36.216' N	107° 7.524' W
DP-40	40° 36.216' N	107° 7.606' W
DP-41	40° 36.536' N	107° 7.243' W
DP-42	40° 36.520' N	107° 5.693' W
DP-43	40° 36.548' N	107° 5.223' W
Repeater	40° 34.860' N	107° 7.242' W
H-41	40° 34.120' N	107° 5.144' W



NAD 83  
UTM Zone 13N  
Synowiec  
9/8/2017  
2221