

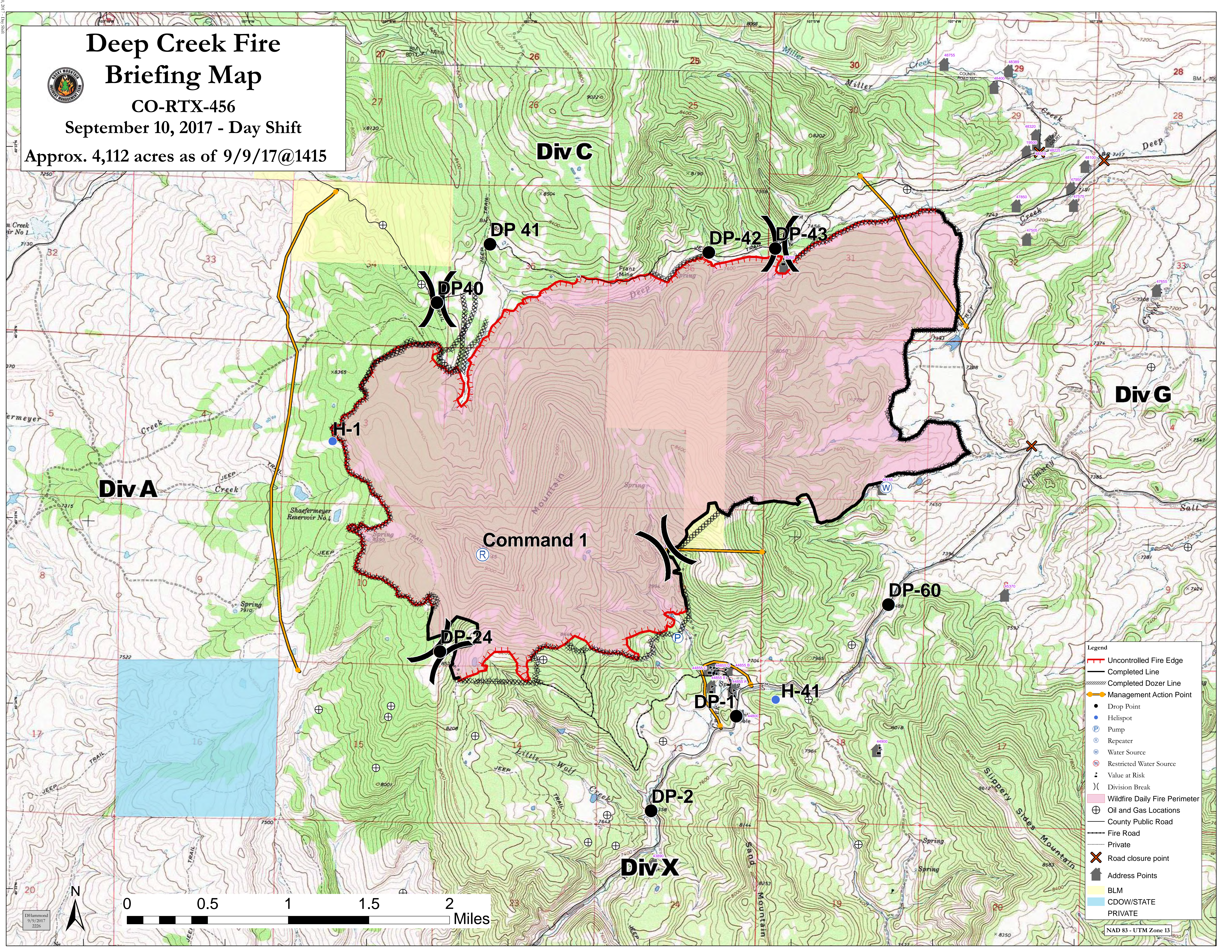
Deep Creek Fire Briefing Map



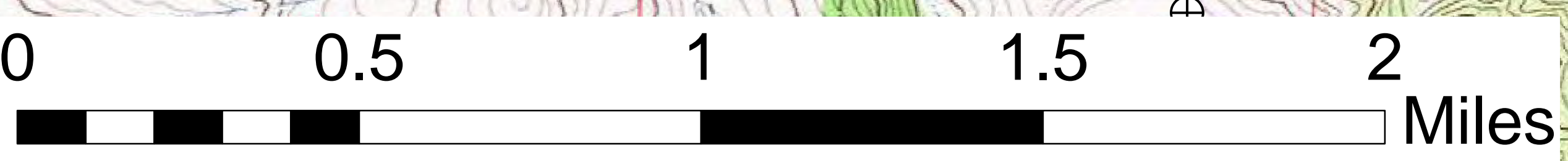
CO-RTX-456

September 10, 2017 - Day Shift

Approx. 4,112 acres as of 9/9/17@1415



- Legend**
- Uncontrolled Fire Edge
 - Completed Line
 - Completed Dozer Line
 - Management Action Point
 - Drop Point
 - Helispot
 - Pump
 - Repeater
 - Water Source
 - Restricted Water Source
 - Value at Risk
 - Division Break
 - Wildfire Daily Fire Perimeter
 - Oil and Gas Locations
 - County Public Road
 - Fire Road
 - Private
 - Road closure point
 - Address Points
 - BLM
 - CDOW/STATE
 - PRIVATE
- NAD 83 - UTM Zone 13



DI Hammond
9/9/2017
2226