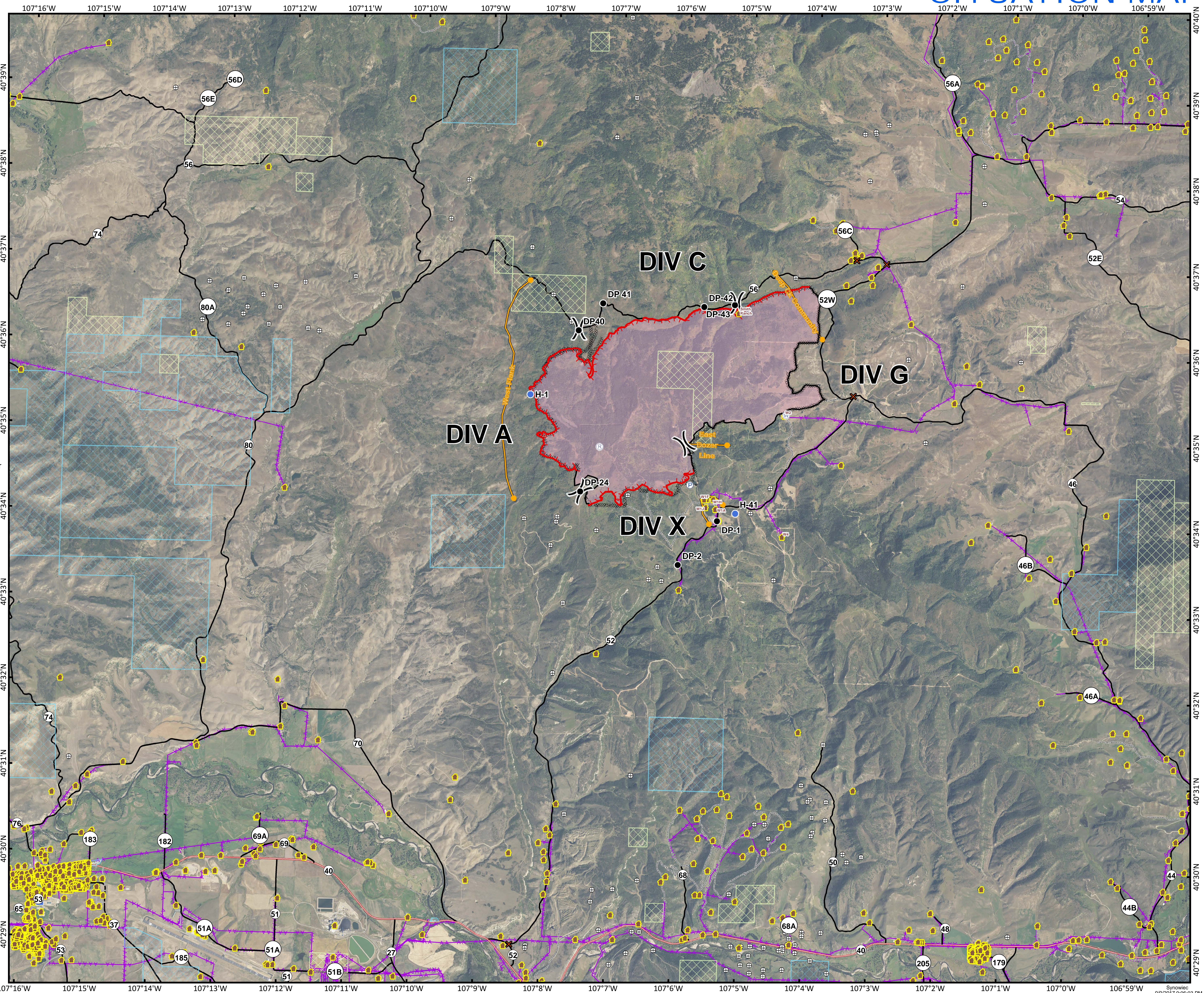


DEEP CREEK FIRE 09/10/2017 DAY SHIFT

SITUATION MAP

CO-RTX-456



4,112 Acres
as of 1415 hrs
09/09/2017

- X Road Closure
- Drop Point
- Helispot
- Incident Command Post
- ⊕ Pump
- ⊕ Repeater
- ⊕ Water Source
- ⎓ Division Break

- 🏠 Address Points
- ⊕ Oil and Gas
- Uncontrolled Fire Edge
- Completed Line
- Completed Dozer Line
- - - Road as Completed Line
- Management Action Point
- ▨ BLM
- ▨ CDOW/STATE
- Wildfire Daily Fire Perimeter
- County Road
- State Road
- Private Road
- City Road
- Powerlines

