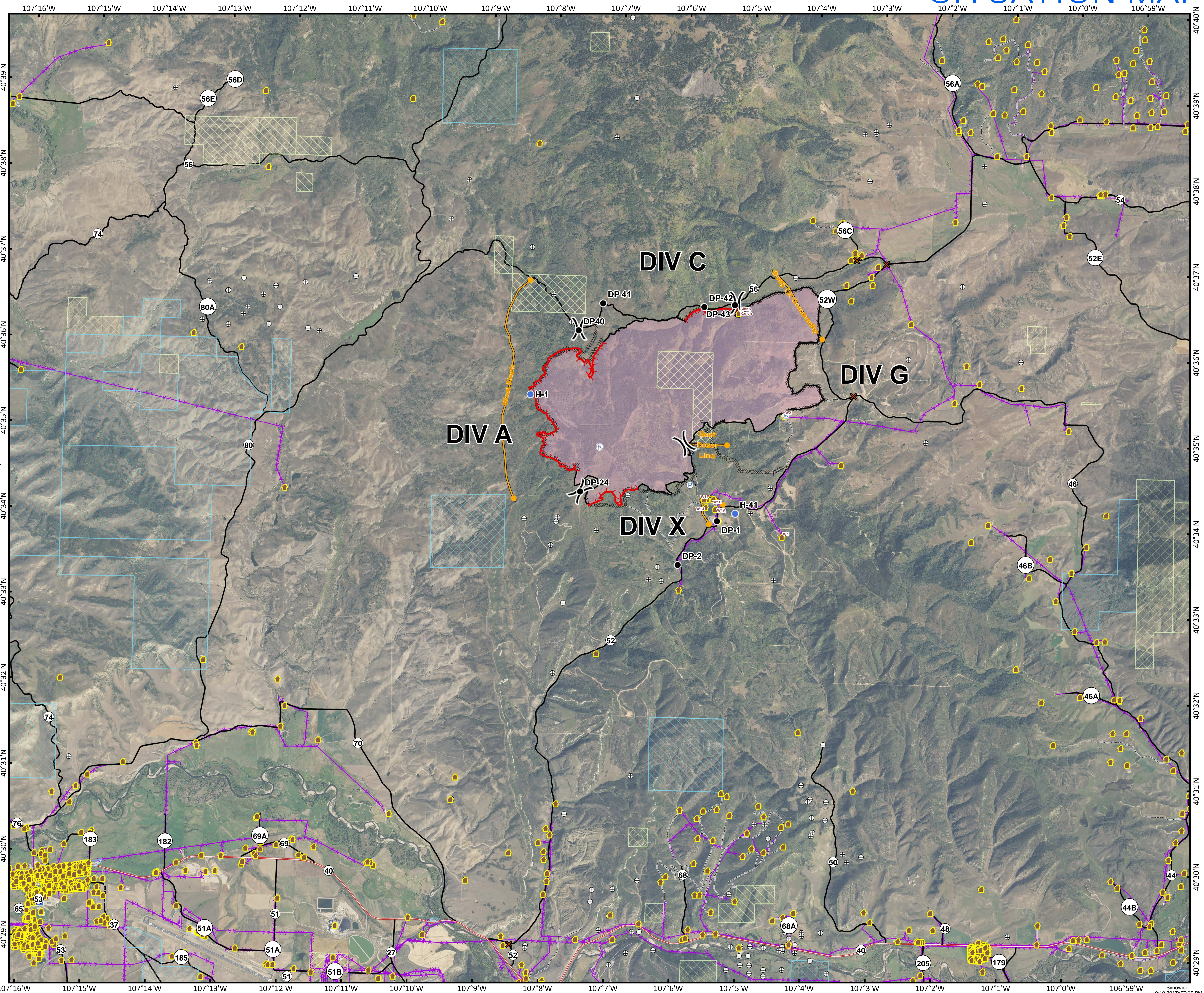


DEEP CREEK FIRE 09/11/2017 DAY SHIFT

SITUATION MAP

CO-RTX-456



4,112 Acres
as of 1415 hrs
09/09/2017

- ✂ Road Closure
- Drop Point
- Helispot
- ▣ Incident Command Post
- Ⓟ Pump
- Ⓡ Repeater
- Ⓜ Water Source
- ⎓ Division Break
- 📍 Address Points
- ⊕ Oil and Gas
- 🔴 Uncontrolled Fire Edge
- Completed Line
- ▨ Completed Dozer Line
- ⋯ Road as Completed Line
- 📍 Management Action Point
- ▨ BLM
- ▨ CDOW/STATE
- 🔴 Wildfire Daily Fire Perimeter
- County Road
- State Road
- Private Road
- City Road
- ⚡ Powerlines

