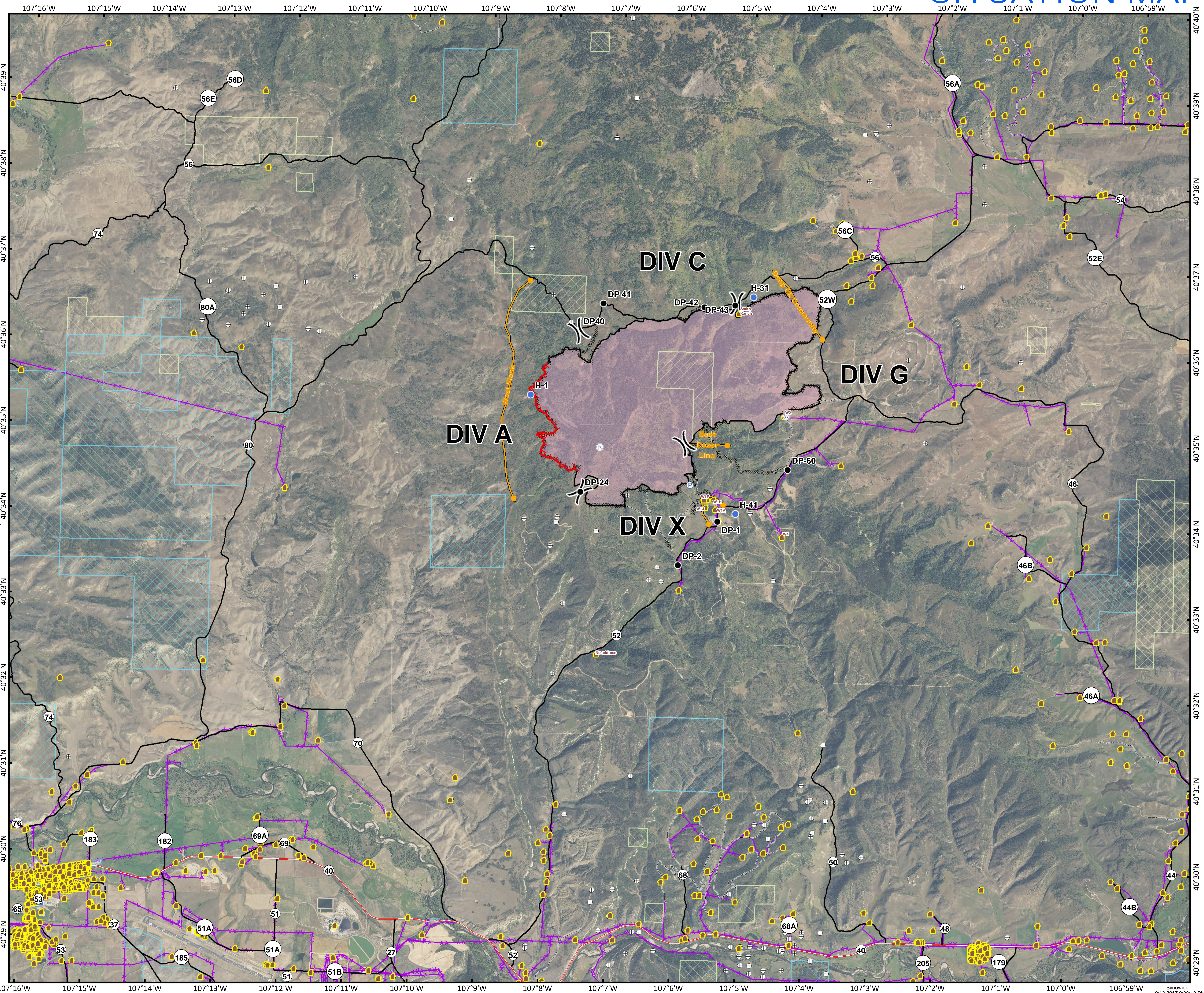


# DEEP CREEK FIRE 09/13/2017 DAY SHIFT

# SITUATION MAP

CO-RTX-456



4,112 Acres  
as of 1415 hrs  
09/09/2017

- Drop Point
- Helispot
- Incident Command Post
- Ⓟ Pump
- Ⓡ Repeater
- Ⓜ Water Source
- ⎓ Division Break

- 🏠 Address Points
- ⊕ Oil and Gas
- 🔴 Uncontrolled Fire Edge
- Completed Line
- ⚡ Completed Dozer Line
- ⋯ Road as Completed Line
- 👉 Management Action Point
- County Road
- State Road
- Private Road
- City Road
- 🌿 BLM
- 🏠 CDOW/STATE
- 🔴 Wildfire Daily Fire Perimeter
- ⚡ Powerlines



Miles  
0 0.75 1.5