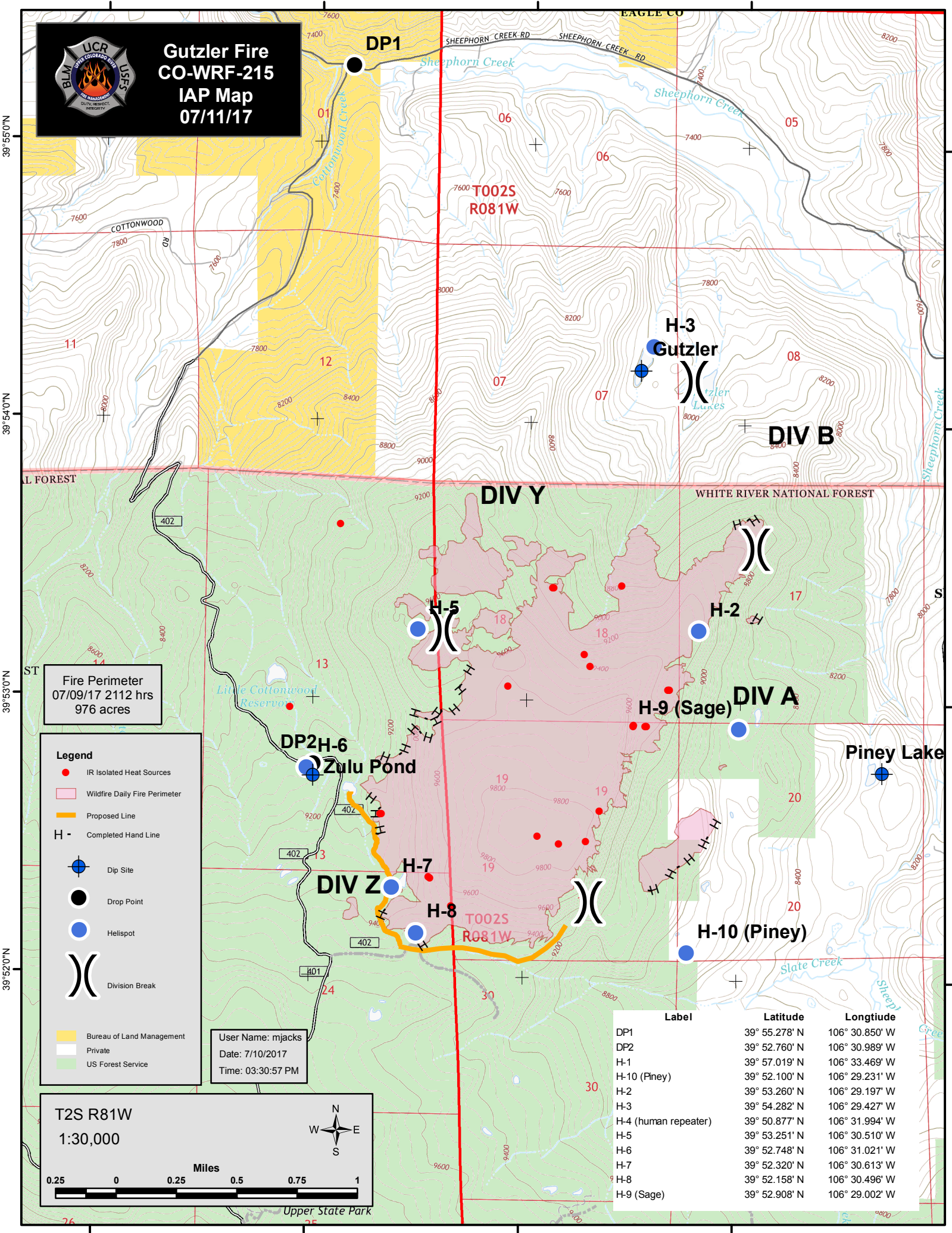




**Gutzler Fire
CO-WRF-215
IAP Map
07/11/17**



Fire Perimeter
07/09/17 2112 hrs
976 acres

Legend

- IR Isolated Heat Sources
- Wildfire Daily Fire Perimeter
- Proposed Line
- H - Completed Hand Line
- ⊕ Dip Site
- Drop Point
- Helispot
-)) Division Break
- Bureau of Land Management
- Private
- US Forest Service

User Name: mjacks
Date: 7/10/2017
Time: 03:30:57 PM

T2S R81W
1:30,000

Label	Latitude	Longitude
DP1	39° 55.278' N	106° 30.850' W
DP2	39° 52.760' N	106° 30.989' W
H-1	39° 57.019' N	106° 33.469' W
H-10 (Piney)	39° 52.100' N	106° 29.231' W
H-2	39° 53.260' N	106° 29.197' W
H-3	39° 54.282' N	106° 29.427' W
H-4 (human repeater)	39° 50.877' N	106° 31.994' W
H-5	39° 53.251' N	106° 30.510' W
H-6	39° 52.748' N	106° 31.021' W
H-7	39° 52.320' N	106° 30.613' W
H-8	39° 52.158' N	106° 30.496' W
H-9 (Sage)	39° 52.908' N	106° 29.002' W