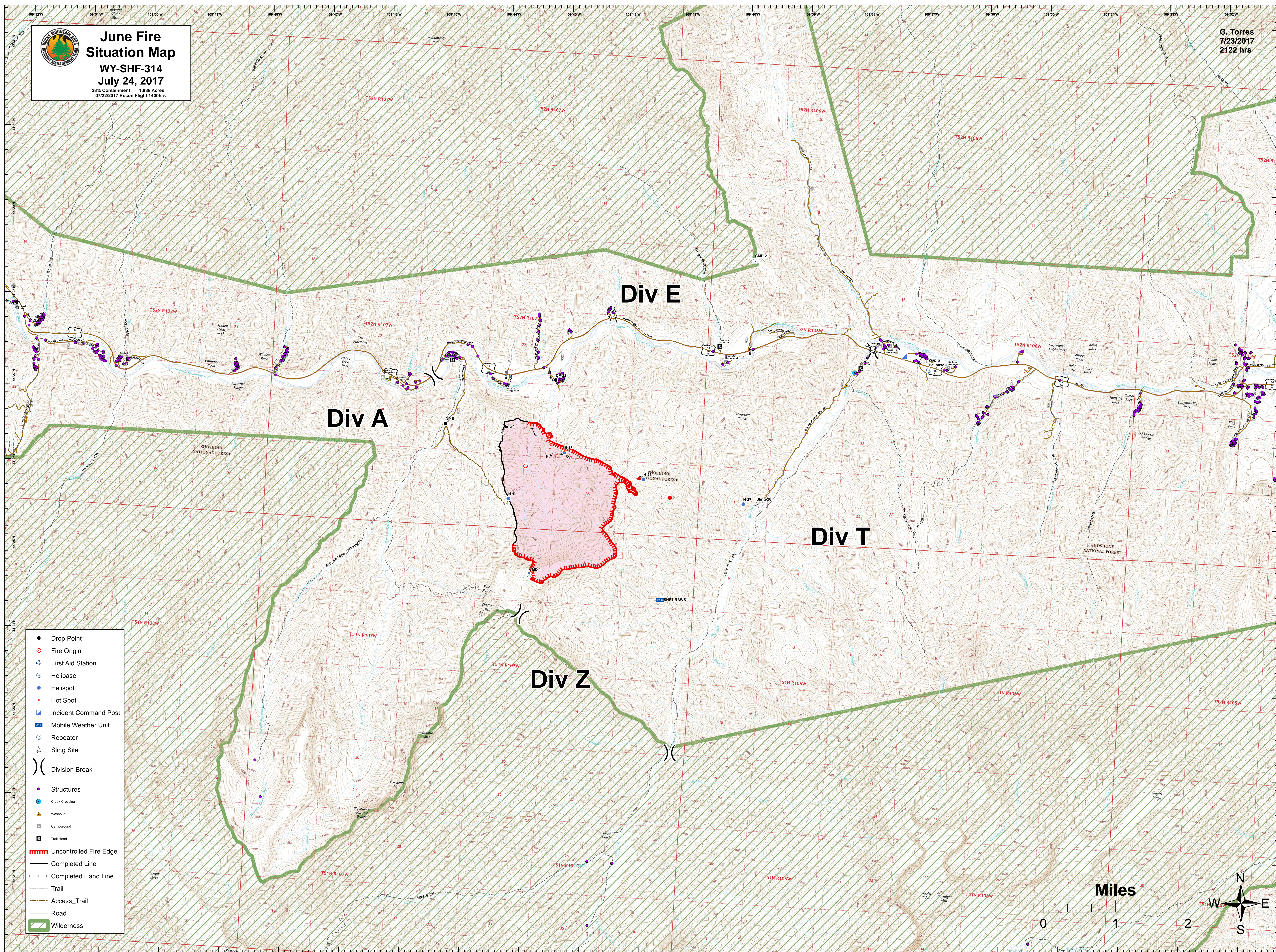


**June Fire
Situation Map**
WY-SHF-314
July 24, 2017
28% Containment 1,938 Acres
07/22/2017 Recon Flight 1400hrs

G. Torres
7/23/2017
2122 hrs



- Drop Point
- ⊕ Fire Origin
- ⊕ First Aid Station
- ⊕ Helibase
- Helispot
- Hot Spot
- ⊕ Incident Command Post
- ⊕ Mobile Weather Unit
- ⊕ Repeater
- ⊕ Sling Site
-)) Division Break
- Structures
- Creek Crossing
- ▲ Washout
- ⊕ Campground
- ⊕ Trail Head
- ▬ Uncontrolled Fire Edge
- ▬ Completed Line
- - - Completed Hand Line
- ⋯ Trail
- ⋯ Access_Trail
- ▬ Road
- ▬ Wilderness

