

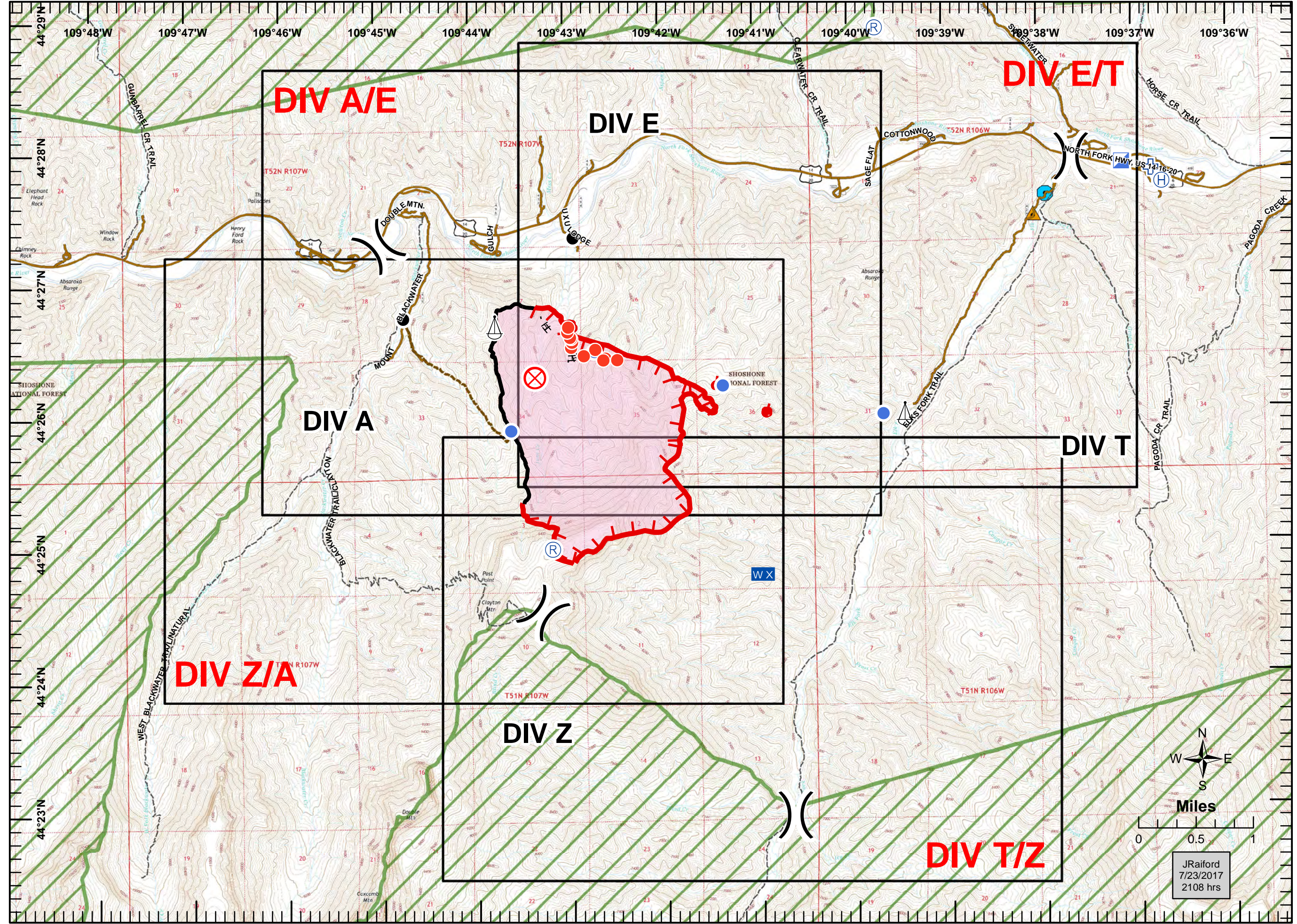


IAP Map Index Map

June Fire
WY-SHF-314
July 24, 2017
UTM Z12N NAD83
28% Contained

1938 acres
Recon Flight @ 1499hrs
on 7/22/17

- Drop Point
- Fire Origin
- First Aid Station
- Helibase
- Helispot
- Hot Spot
- Incident Command Post
- Mobile Weather Unit
- Repeater
- Sling Site
- Division Break
- Uncontrolled Fire Edge
- Completed Line
- Completed Hand Line
- Wildfire Daily Fire Perimeter
- Creek Crossing
- Washout
- Wilderness



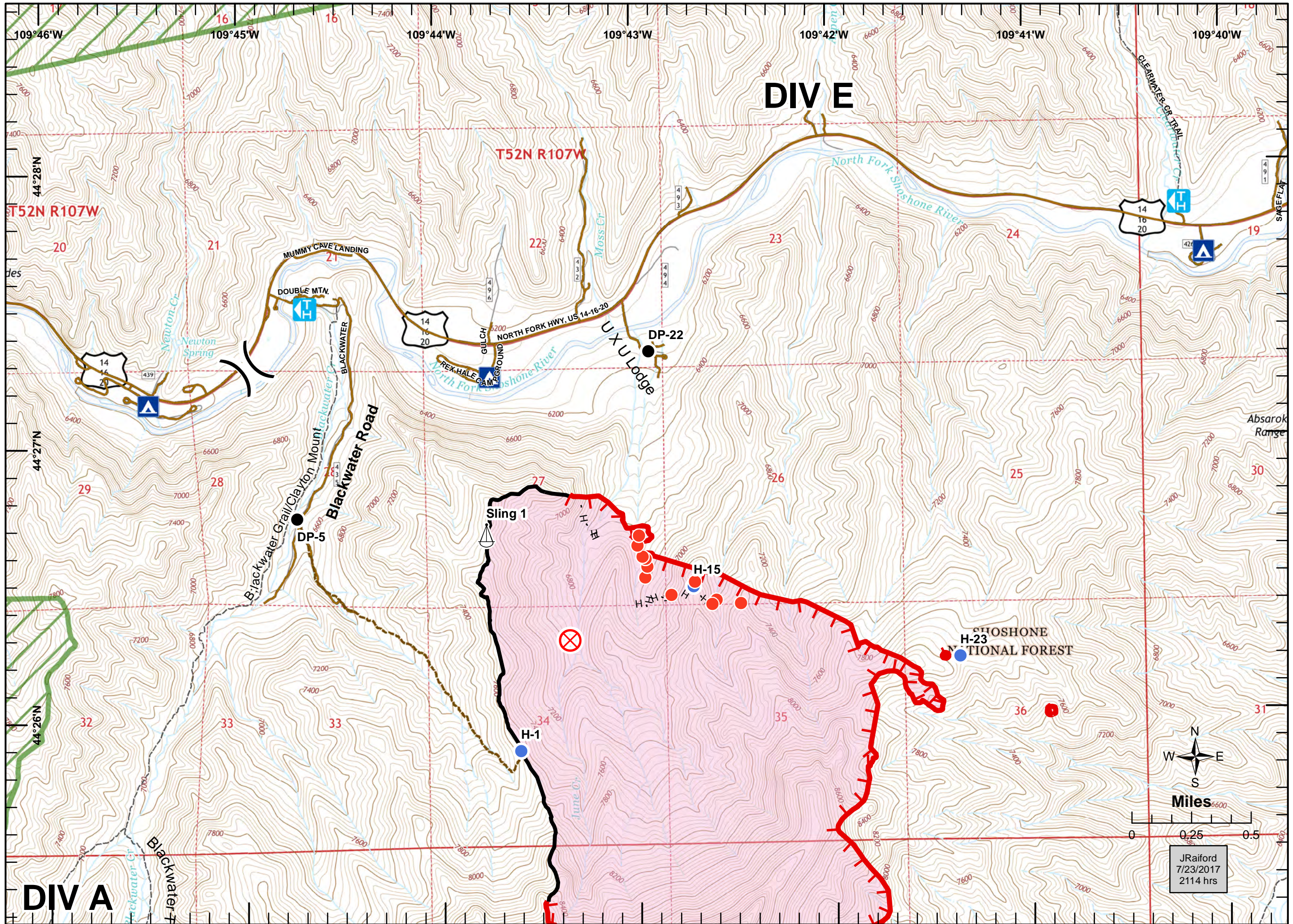
JRaiford
7/23/2017
2108 hrs



IAP Map DIV A/E June Fire

WY-SHF-314
July 24, 2017
UTM Z12N NAD83
28% Contained

1938 acres
Recon flight 7/22 at 1400hrs



- Drop Point
- Fire Origin
- Helispot
- Hot Spot
- Sling Site
- Division Break
- Uncontrolled Fire Edge
- Completed Line
- Completed Hand Line
- Wildfire Daily Fire Perimeter
- Campgrounds
- Trailheads
- Trail
- Access_Trail
- Road
- Wilderness



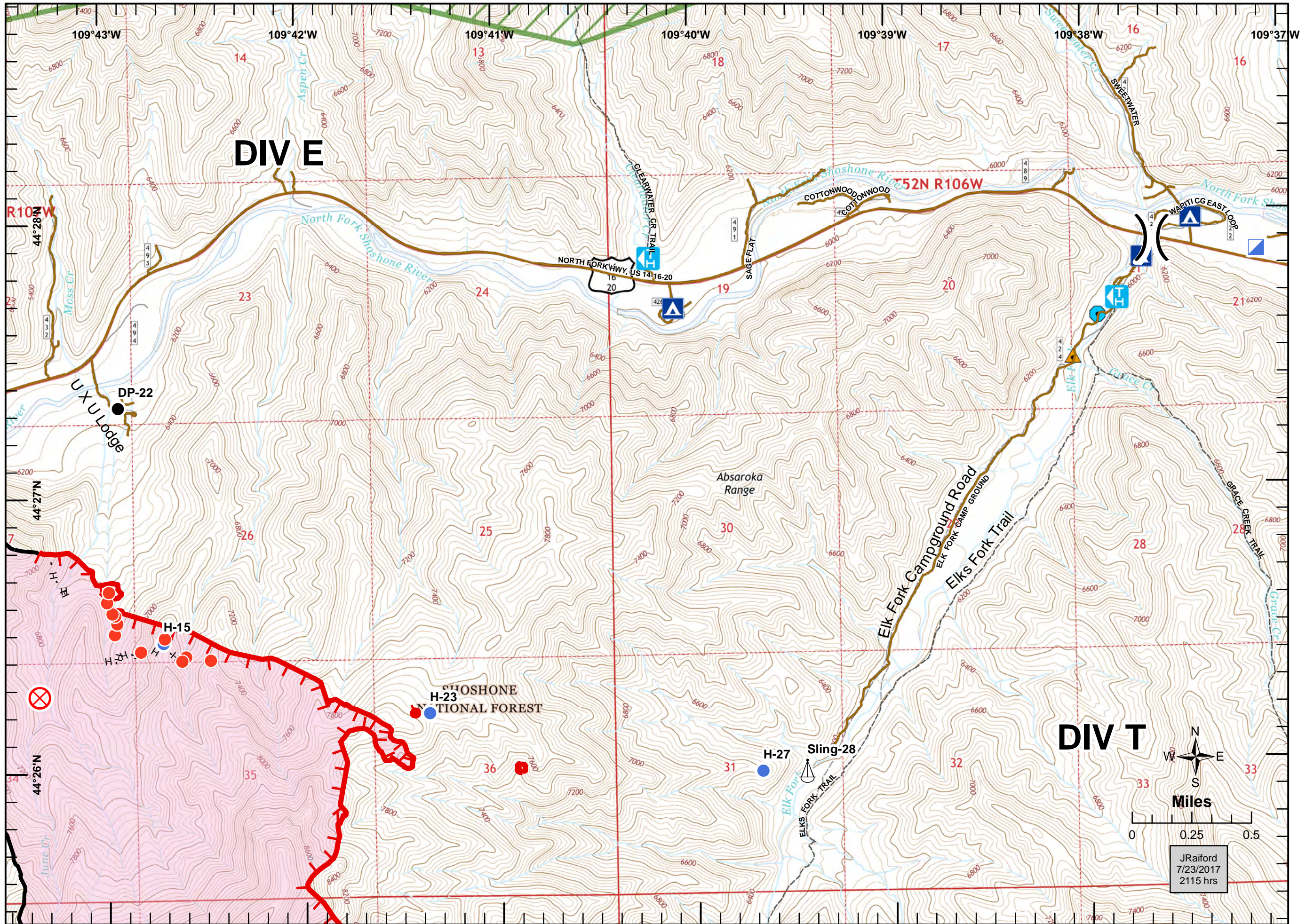
JRaiford
7/23/2017
2114 hrs



IAP Map DIV E/T June Fire

WY-SHF-314
July 24, 2017
UTM Z12N NAD83
28% Contained

1938 acres
Recon flight 7/22 at 1400hrs



- Drop Point
- Fire Origin
- Helispot
- Hot Spot
- Incident Command Post
- Sling Site
- Division Break
- Uncontrolled Fire Edge
- Completed Line
- Completed Hand Line
- Wildfire Daily Fire Perimeter
- Campgrounds
- Trailheads
- Trail
- Road
- Wilderness
- Creek Crossing/Washouts**
- Creek Crossing
- Washout



IAP Map DIV T/Z June Fire

WY-SHF-314

July 24, 2017

UTM Z12N NAD83

28% Contained

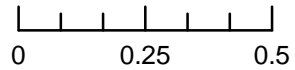
1938 acres

Recon flight 7/22 at 1400hrs

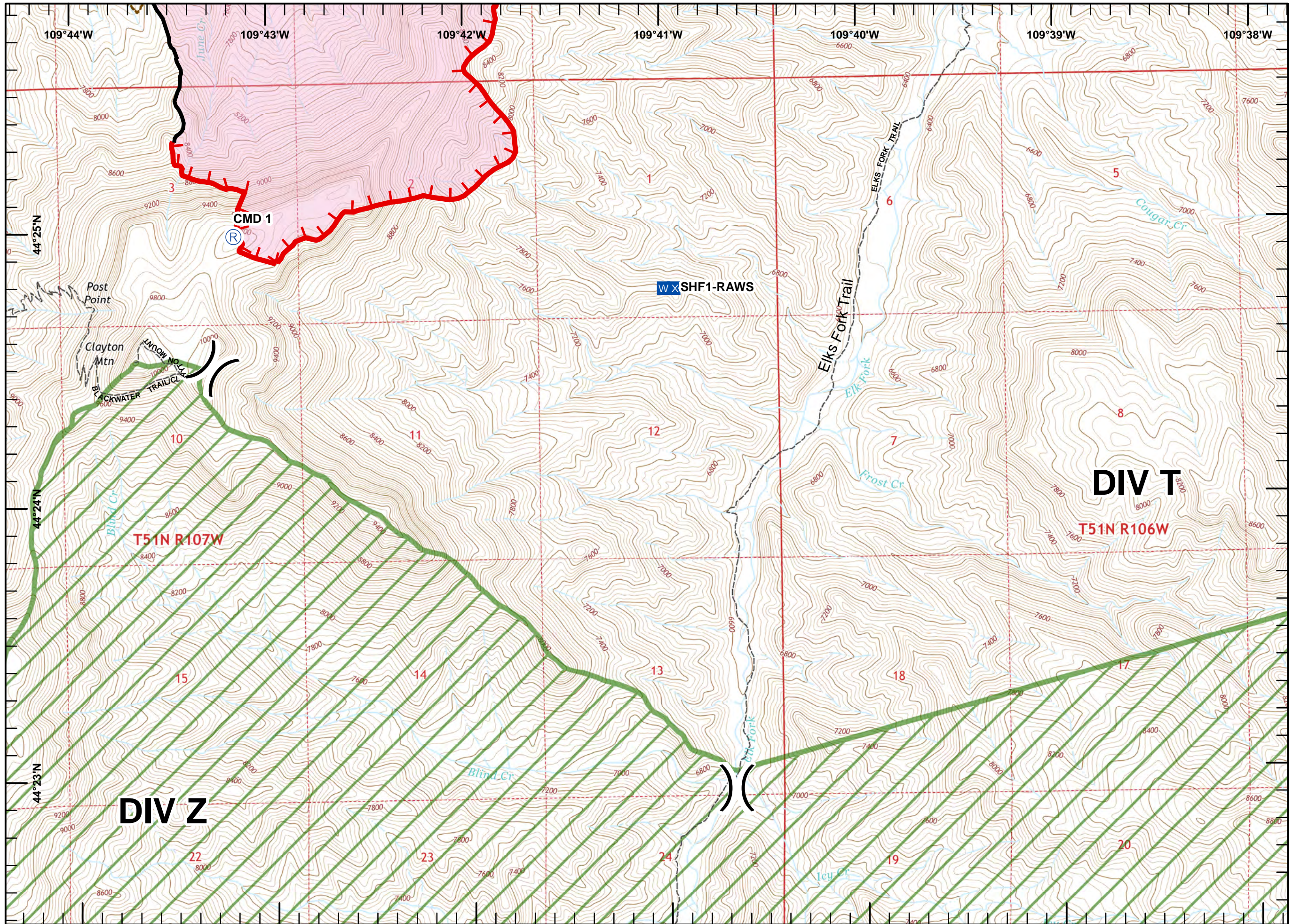
	Mobile Weather Unit
	Repeater
	Division Break
	Uncontrolled Fire Edge
	Completed Line
	Wildfire Daily Fire Perimeter
	Trail
	Access Trail
	Wilderness



Miles



JRaiford
7/23/2017
2116 hrs





IAP Map DIV Z/A June Fire

WY-SHF-314








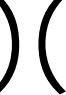


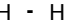






July 24, 2017

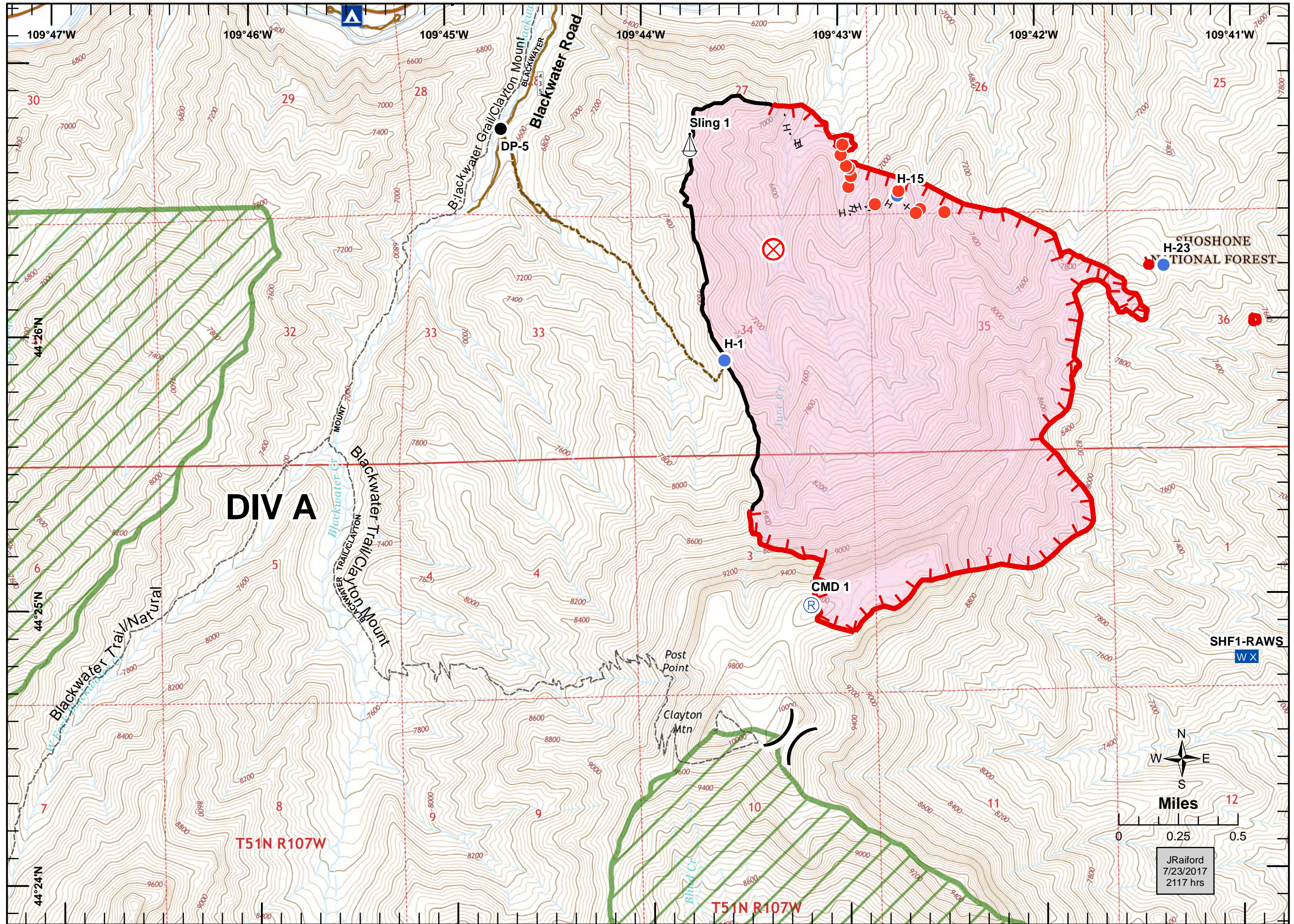
UTM Z12N NAD83

28% Contained

1938 acres

Recon flight 7/22 at 1400hrs

-  Drop Point
-  Fire Origin
-  Helispot
-  Hot Spot
-  Mobile Weather Unit
-  Repeater
-  Sling Site
-  Division Break
-  Uncontrolled Fire Edge
-  Completed Line
-  Completed Hand Line
-  Wildfire Daily Fire Perimeter
-  Campgrounds
-  Trail
-  Access_Trail
-  Road
-  Wilderness



JRaiford
7/23/2017
2117 hrs