



# IAP Map DIV E/T June Fire

WY-SHF-314

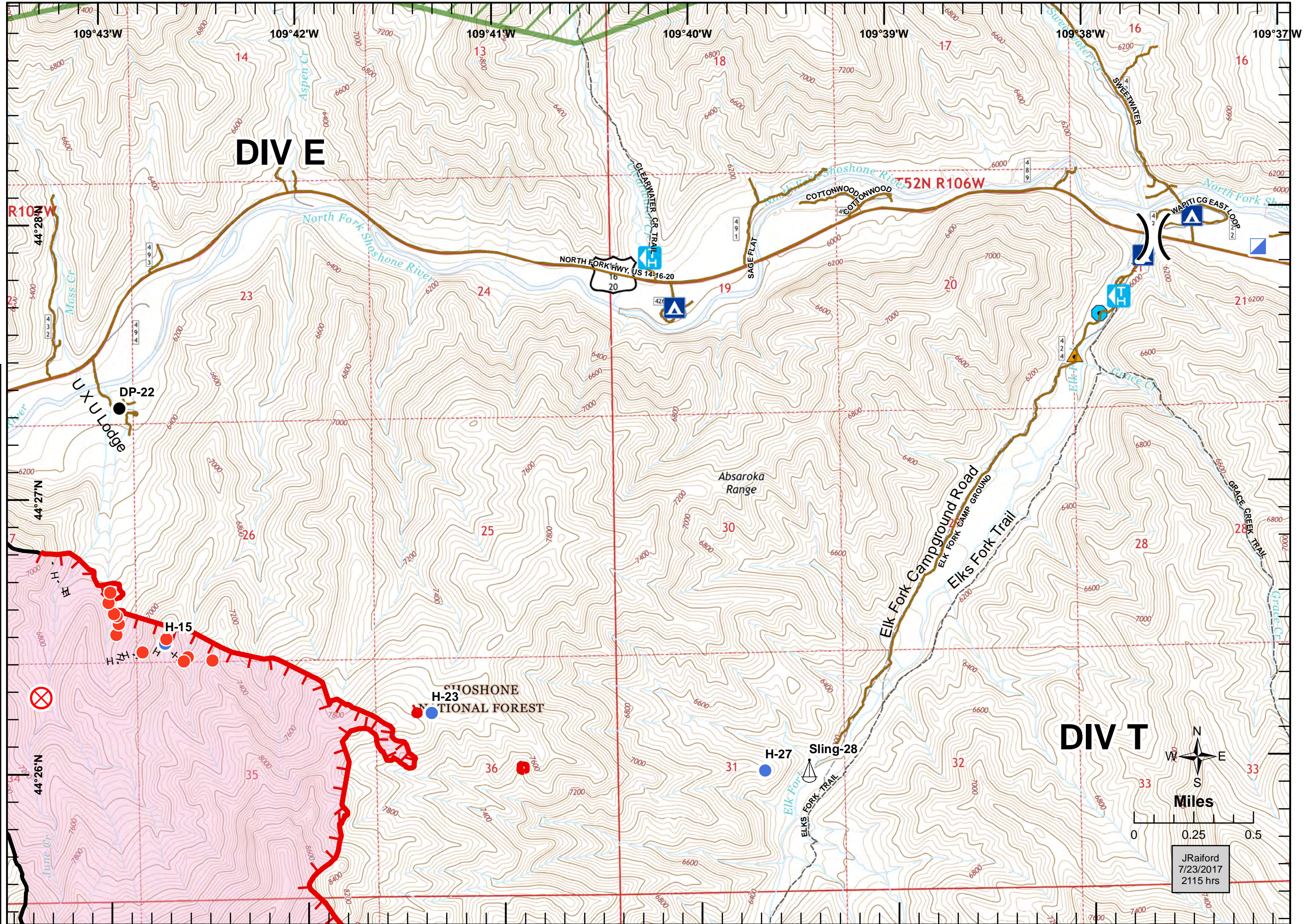
July 24, 2017

UTM Z12N NAD83

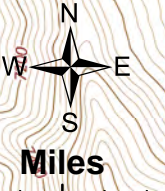
28% Contained

1938 acres

Recon flight 7/22 at 1400hrs



- Drop Point
- Fire Origin
- Helispot
- Hot Spot
- Incident Command Post
- Sling Site
- Division Break
- Uncontrolled Fire Edge
- Completed Line
- Completed Hand Line
- Wildfire Daily Fire Perimeter
- Campgrounds
- Trailheads
- Trail
- Road
- Wilderness
- Creek Crossing/Washouts**
- Creek Crossing
- Washout



JRaiford  
7/23/2017  
2115 hrs