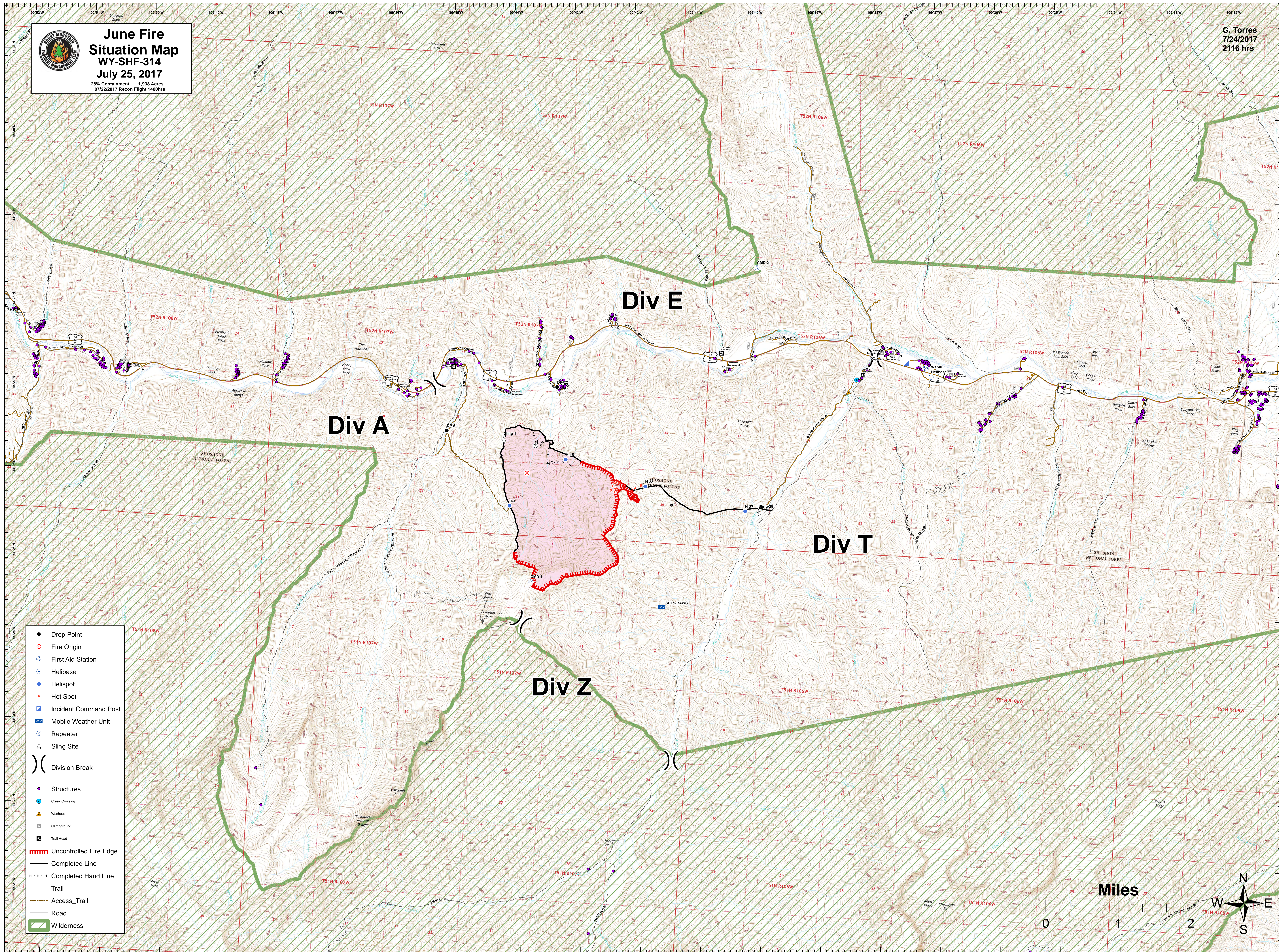




**June Fire  
Situation Map  
WY-SHF-314  
July 25, 2017**

28% Containment 1,938 Acres  
07/22/2017 Recon Flight 1400hrs

G. Torres  
7/24/2017  
2116 hrs



- Drop Point
- ⊙ Fire Origin
- ⊕ First Aid Station
- ⊕ Helibase
- ⊕ Helispot
- Hot Spot
- ⊕ Incident Command Post
- ⊕ Mobile Weather Unit
- ⊕ Repeater
- ⊕ Sling Site
- )) Division Break
- Structures
- ⊕ Creek Crossing
- ▲ Washout
- ⊕ Campground
- ⊕ Trail Head
- ▬ Uncontrolled Fire Edge
- ▬ Completed Line
- - - Completed Hand Line
- ⋯ Trail
- ⋯ Access\_Trail
- ▬ Road
- ▬ Wilderness

Miles

