



IAP Map DIV A/E June Fire

WY-SHF-314

July 25, 2017

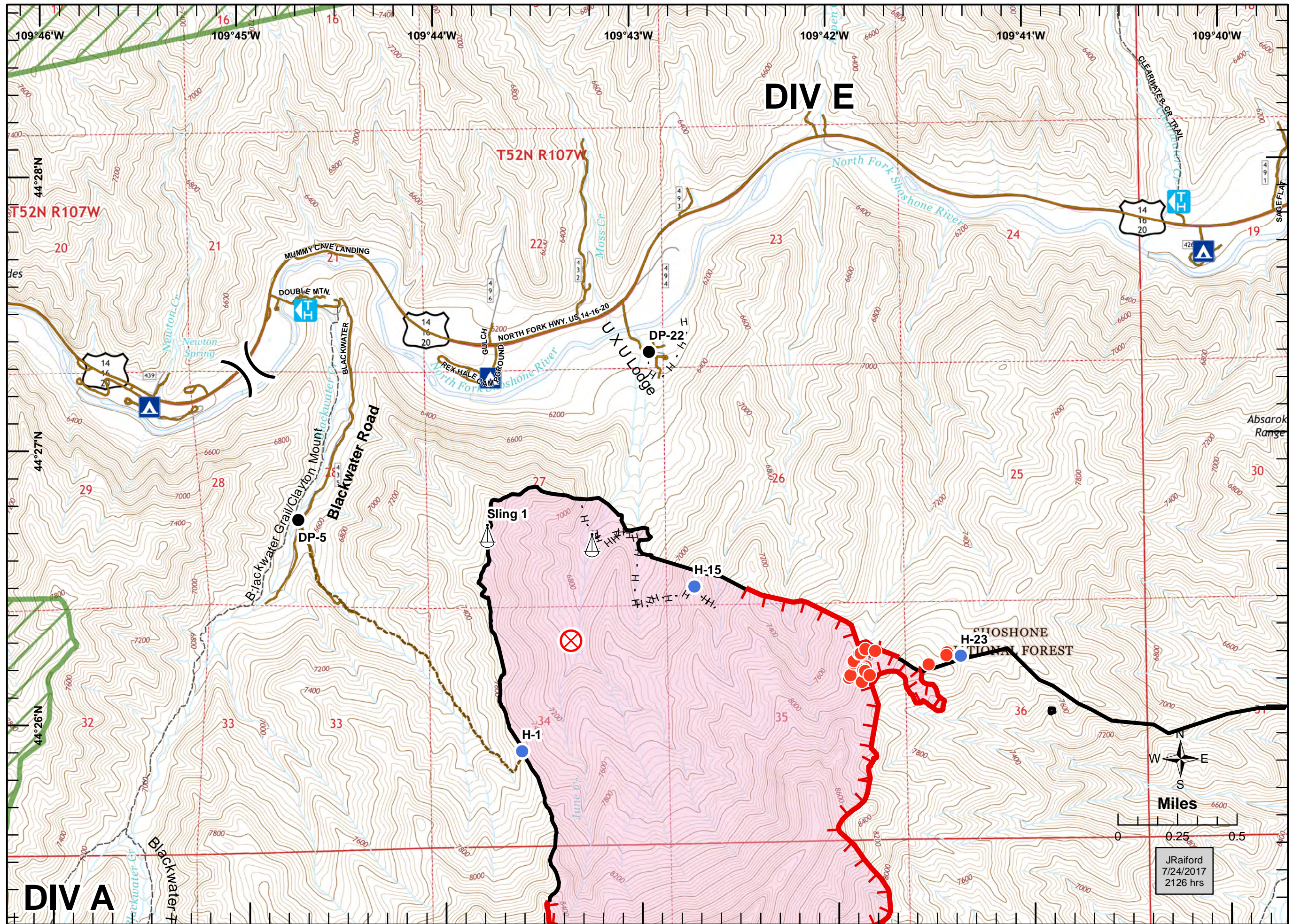
UTM Z12N NAD83

28% Contained

1938 acres

Recon flight 7/22 at 1400hrs

- Drop Point
- ⊗ Fire Origin
- Helispot
- Hot Spot
- ⚓ Sling Site
-) (Division Break
- ┌ Uncontrolled Fire Edge
- Completed Line
- H - H Completed Hand Line
- ▭ Wildfire Daily Fire Perimeter
- ▲ Campgrounds
- Ⓜ Trailheads
- - - Trail
- - - Access_Trail
- Road
- ▭ Wilderness



JRaiford
7/24/2017
2126 hrs