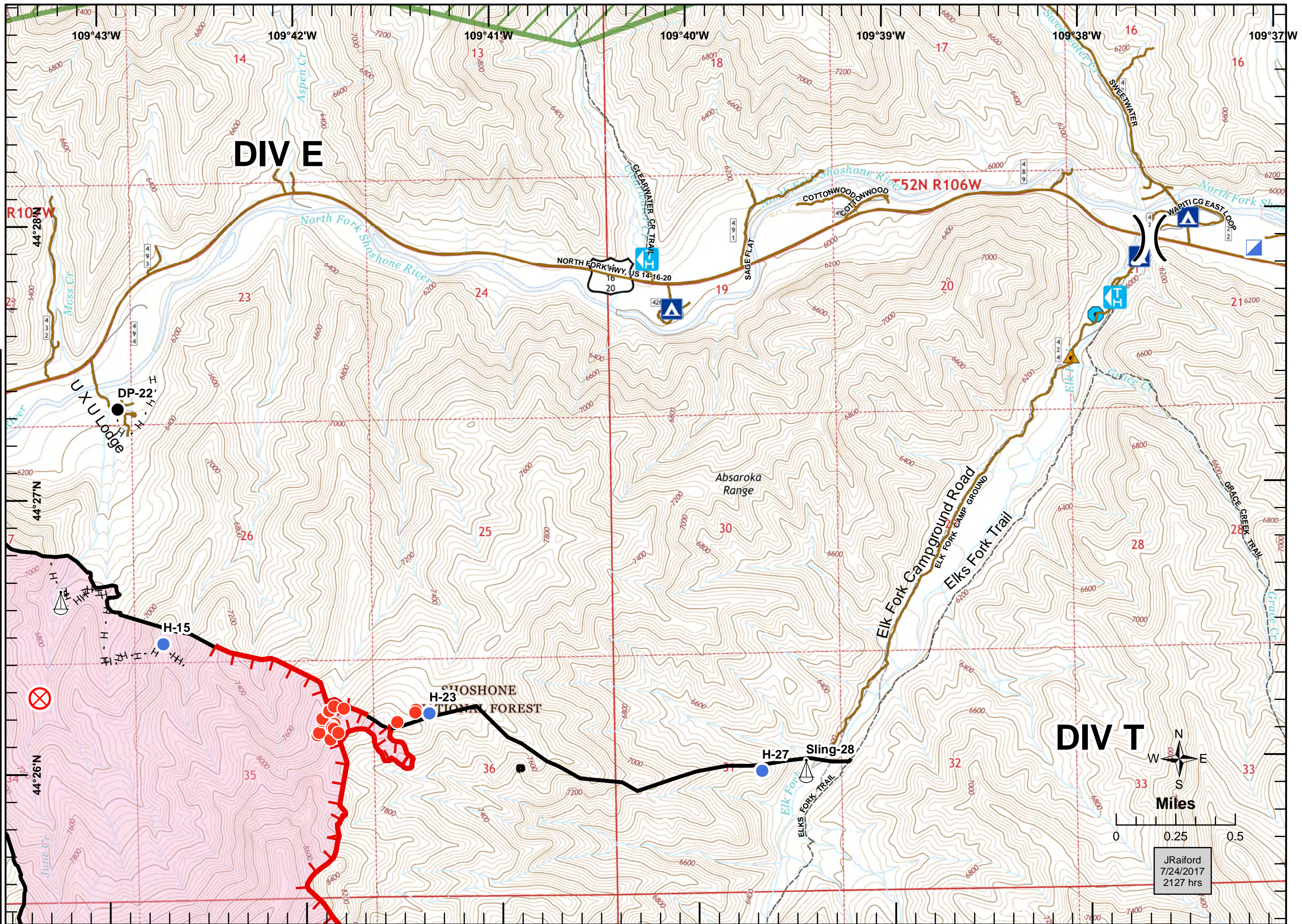




IAP Map DIV E/T June Fire

WY-SHF-314
July 25, 2017
UTM Z12N NAD83
28% Contained

1938 acres
Recon flight 7/22 at 1400hrs



- Drop Point
- Fire Origin
- Helispot
- Hot Spot
- Incident Command Post
- Sling Site
- Division Break
- Uncontrolled Fire Edge
- Completed Line
- Completed Hand Line
- Wildfire Daily Fire Perimeter
- Campgrounds
- Trailheads
- Trail
- Road
- Wilderness
- Creek Crossing/Washouts**
 - Creek Crossing
 - Washout

JRaiford
7/24/2017
2127 hrs