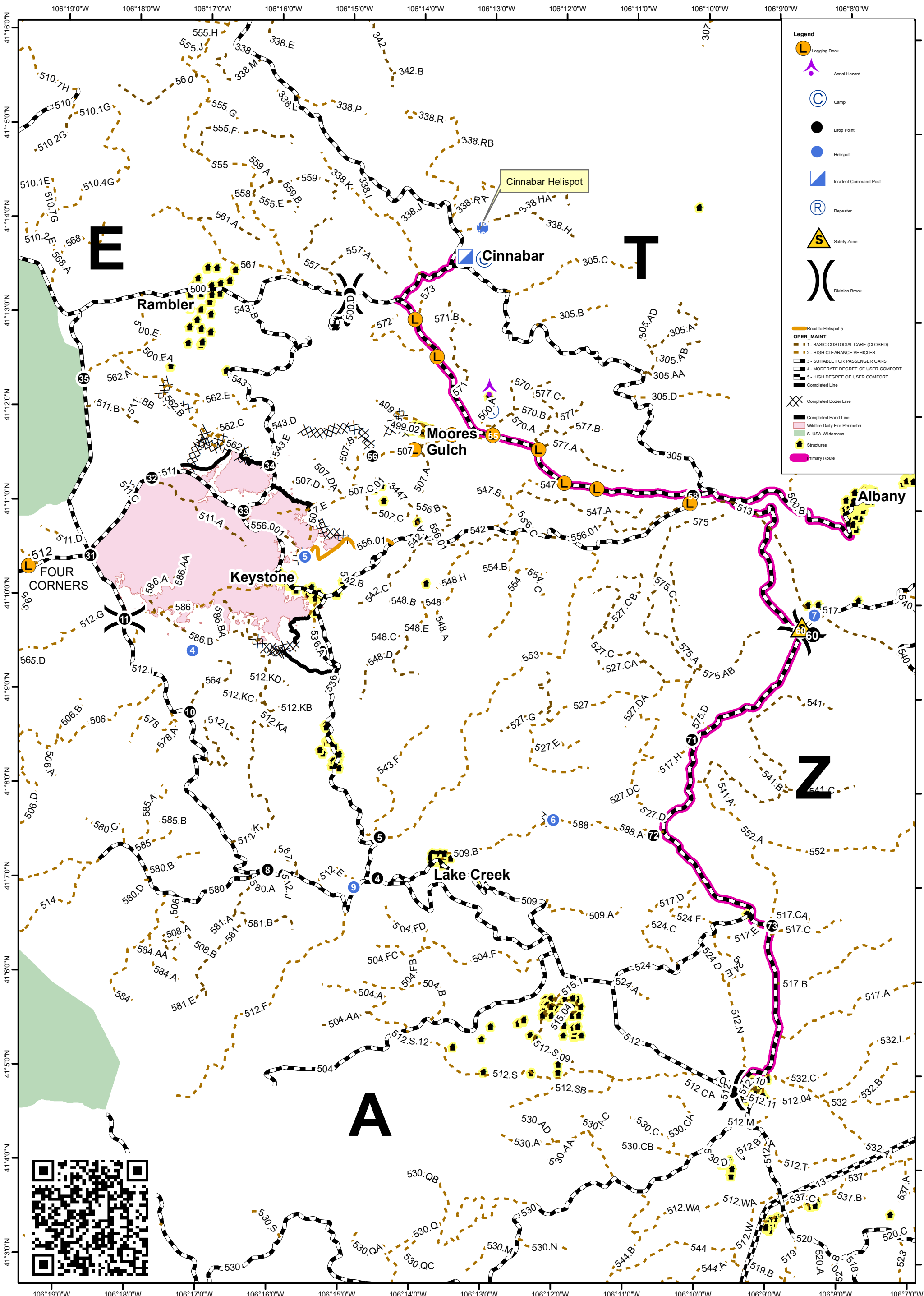


Keystone Fire WY-MBF-017118 Transportation

0 0.5 1 2 Miles



July 13, 2017



Legend

- Logging Deck
- Aerial Hazard
- Camp
- Drop Point
- Helipot
- Incident Command Post
- Repeater
- Safety Zone
- Division Break

OPER. MAINT

- 1 - BASIC CUSTODIAL CARE (CLOSED)
- 2 - HIGH CLEARANCE VEHICLES
- 3 - SUITABLE FOR PASSENGER CARS
- 4 - MODERATE DEGREE OF USER COMFORT
- 5 - HIGH DEGREE OF USER COMFORT
- Completed Line
- Completed Dozer Line
- Completed Hand Line
- Wildfire Daily Fire Perimeter
- S.USA.Wilderness
- Structures
- Primary Route

