


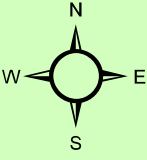
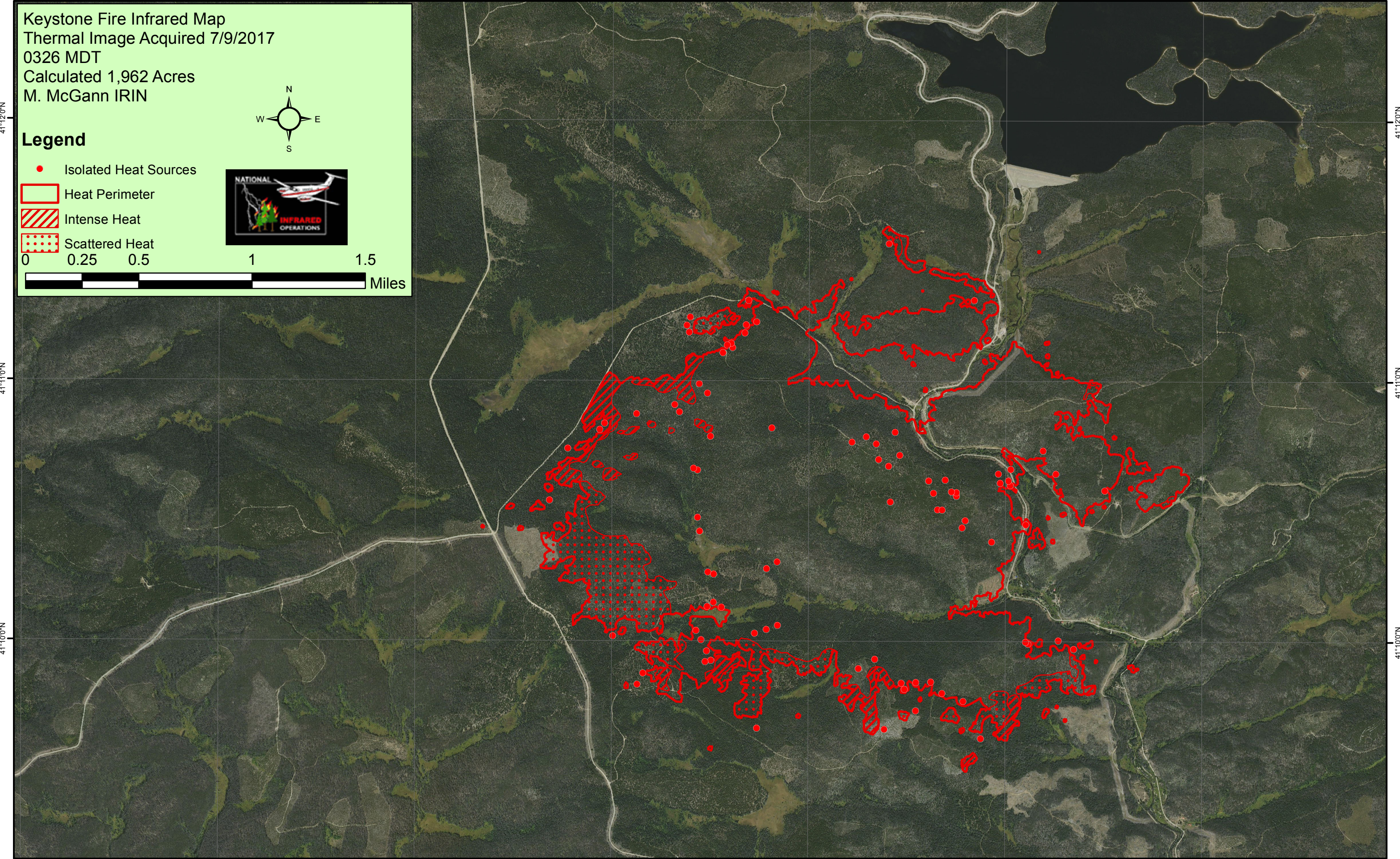
106°21'0"W 106°20'0"W 106°19'0"W 106°18'0"W 106°17'0"W 106°16'0"W 106°15'0"W

**Keystone Fire Infrared Map**  
 Thermal Image Acquired 7/9/2017  
 0326 MDT  
 Calculated 1,962 Acres  
 M. McGann IRIN

**Legend**

- Isolated Heat Sources
- ▭ Heat Perimeter
- ▨ Intense Heat
- ▣ Scattered Heat

0 0.25 0.5 1 1.5 Miles

106°21'0"W 106°20'0"W 106°19'0"W 106°18'0"W 106°17'0"W 106°16'0"W 106°15'0"W

41°12'0"N  
41°11'0"N  
41°10'0"N

41°12'0"N  
41°11'0"N  
41°10'0"N