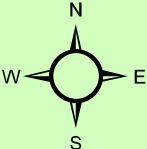
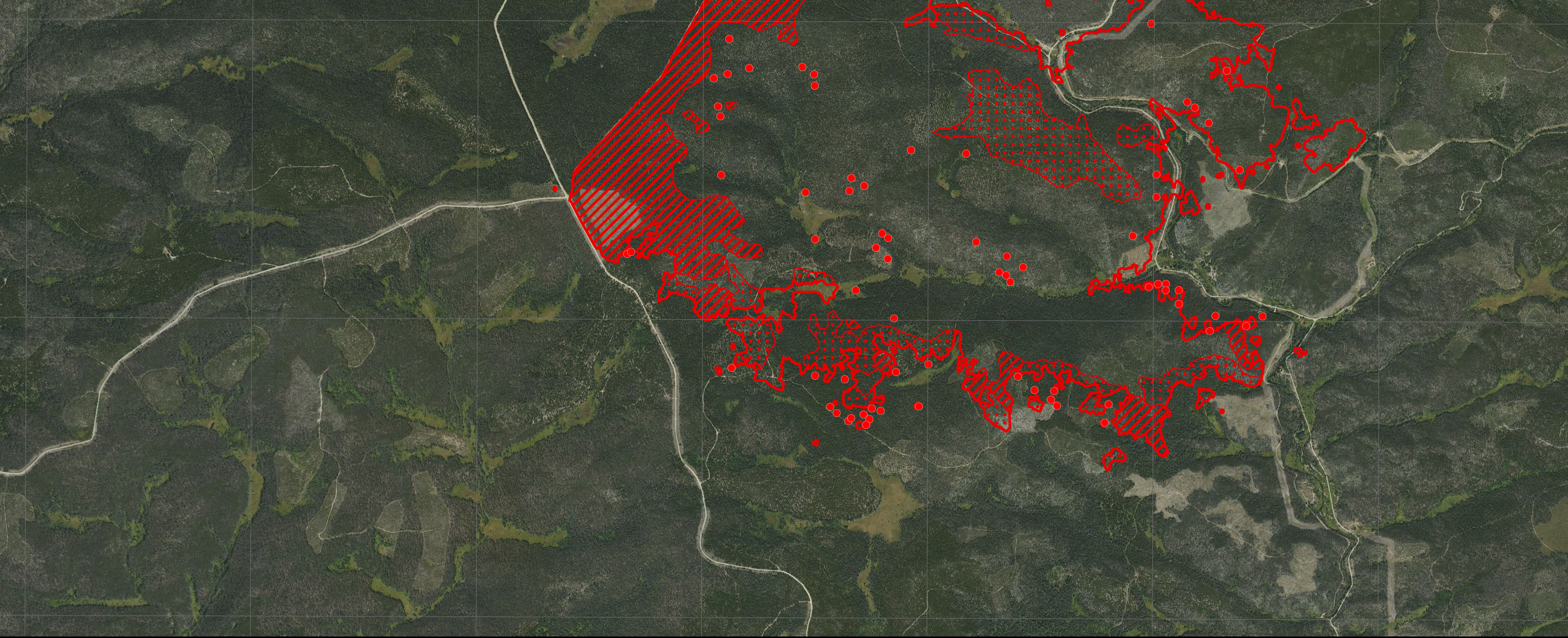


106°21'0"W 106°20'0"W 106°19'0"W 106°18'0"W 106°17'0"W 106°16'0"W 106°15'0"W

Keystone Fire Infrared Map
Thermal Image Acquired 7/12/2017
0427 MDT
Calculated 2,264 Acres
M. McGann IRIN



- Legend**
- Isolated Heat Sources
 - Heat Perimeter
 - ▨ Intense Heat
 - ▣ Scattered Heat



106°21'0"W 106°20'0"W 106°19'0"W 106°18'0"W 106°17'0"W 106°16'0"W 106°15'0"W

41°12'0"N
41°11'0"N
41°10'0"N
41°9'0"N

41°12'0"N
41°11'0"N
41°10'0"N
41°9'0"N