

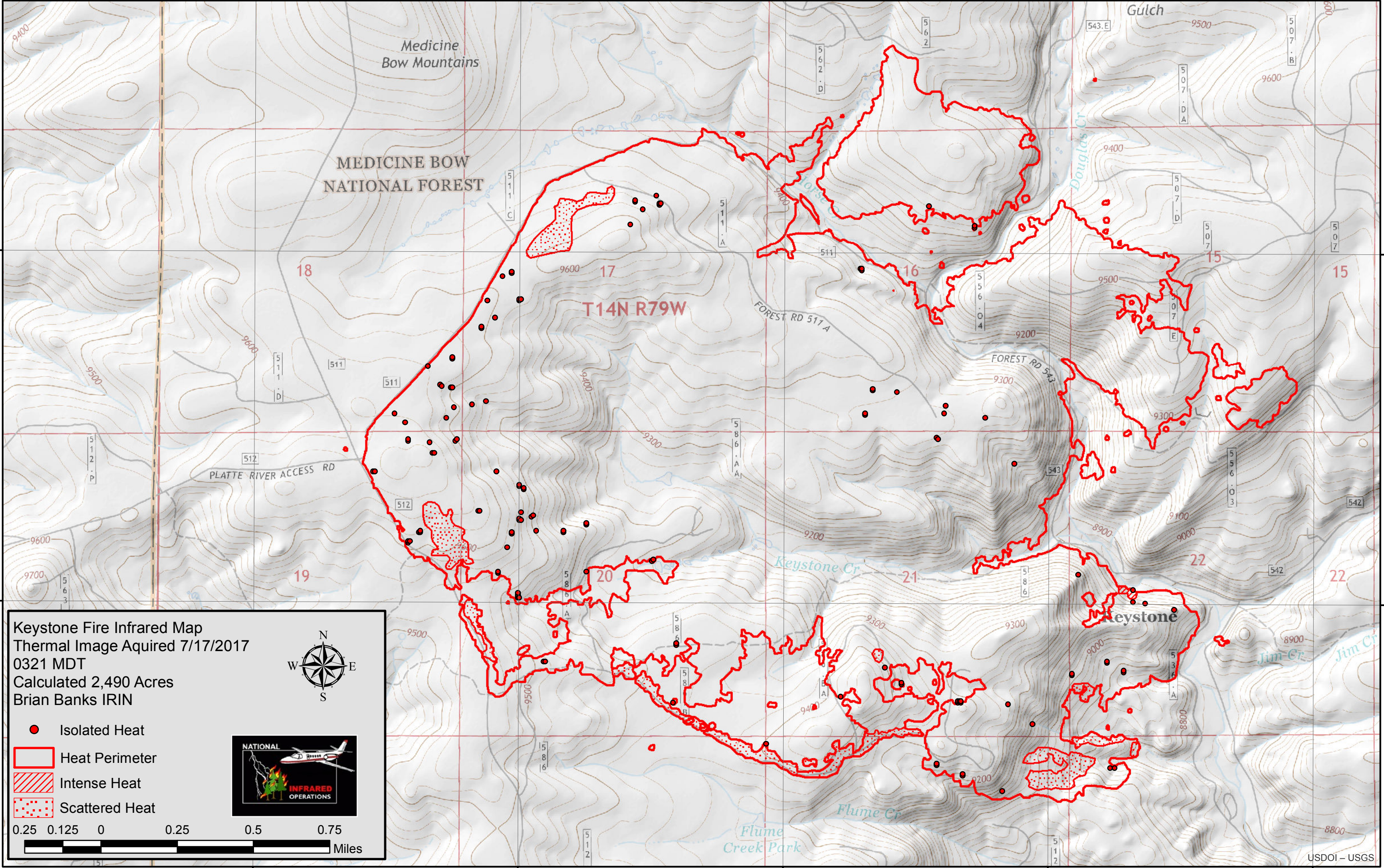
106°19'0"W 106°18'0"W 106°17'0"W 106°16'0"W 106°15'0"W

41°11'0"N

41°10'0"N

41°11'0"N

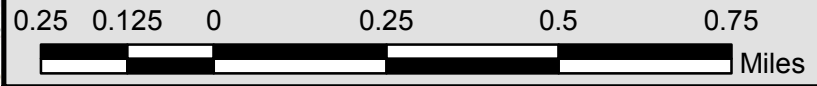
41°10'0"N



Keystone Fire Infrared Map
 Thermal Image Aquired 7/17/2017
 0321 MDT
 Calculated 2,490 Acres
 Brian Banks IRIN



- Isolated Heat
- Heat Perimeter
- Intense Heat
- Scattered Heat



106°19'0"W 106°18'0"W 106°17'0"W 106°16'0"W 106°15'0"W