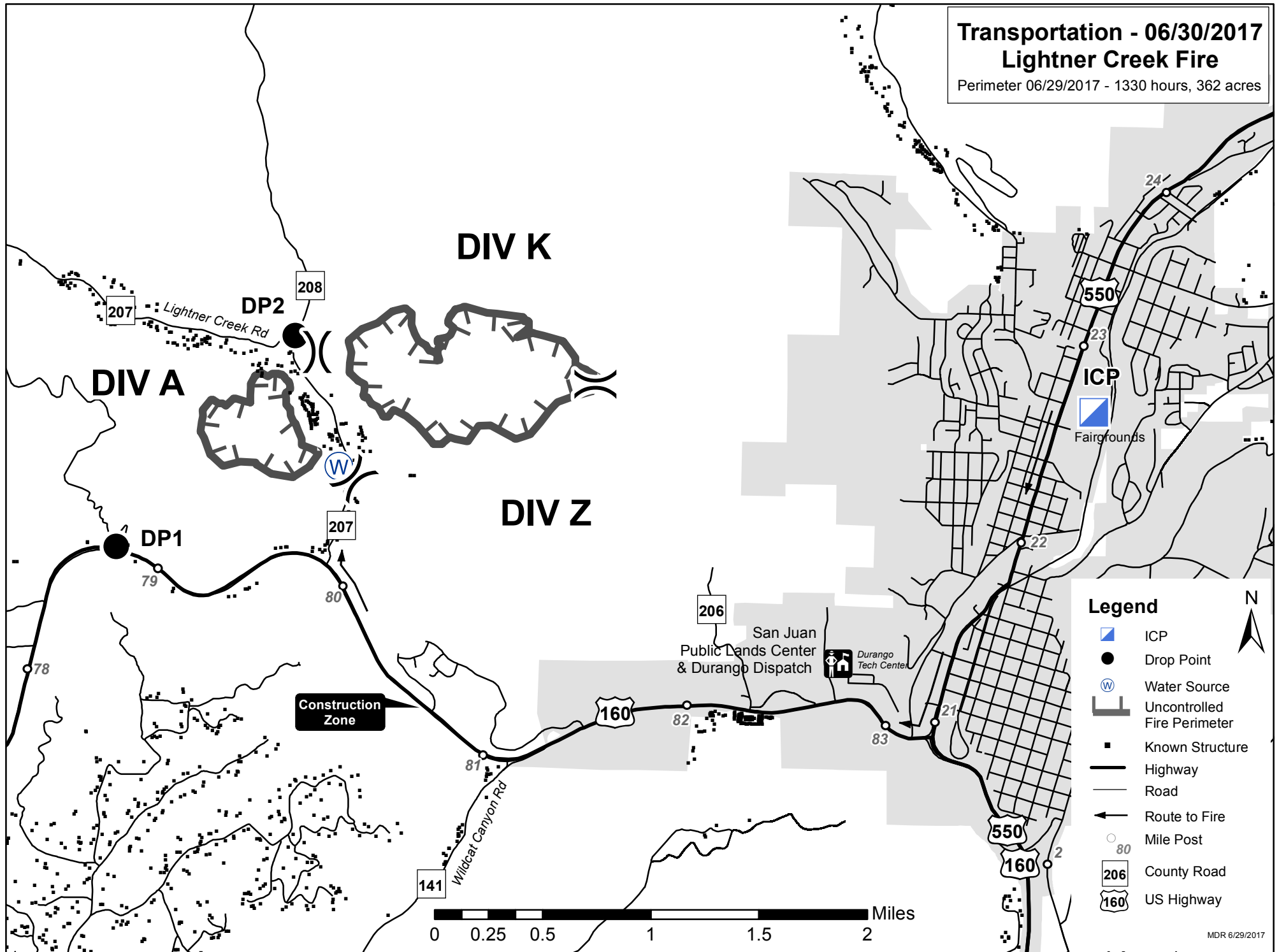


**Transportation - 06/30/2017**  
**Lightner Creek Fire**  
Perimeter 06/29/2017 - 1330 hours, 362 acres



- Legend**
- ICP
  - Drop Point
  - Water Source
  - Uncontrolled Fire Perimeter
  - Known Structure
  - Highway
  - Road
  - Route to Fire
  - Mile Post
  - County Road
  - US Highway