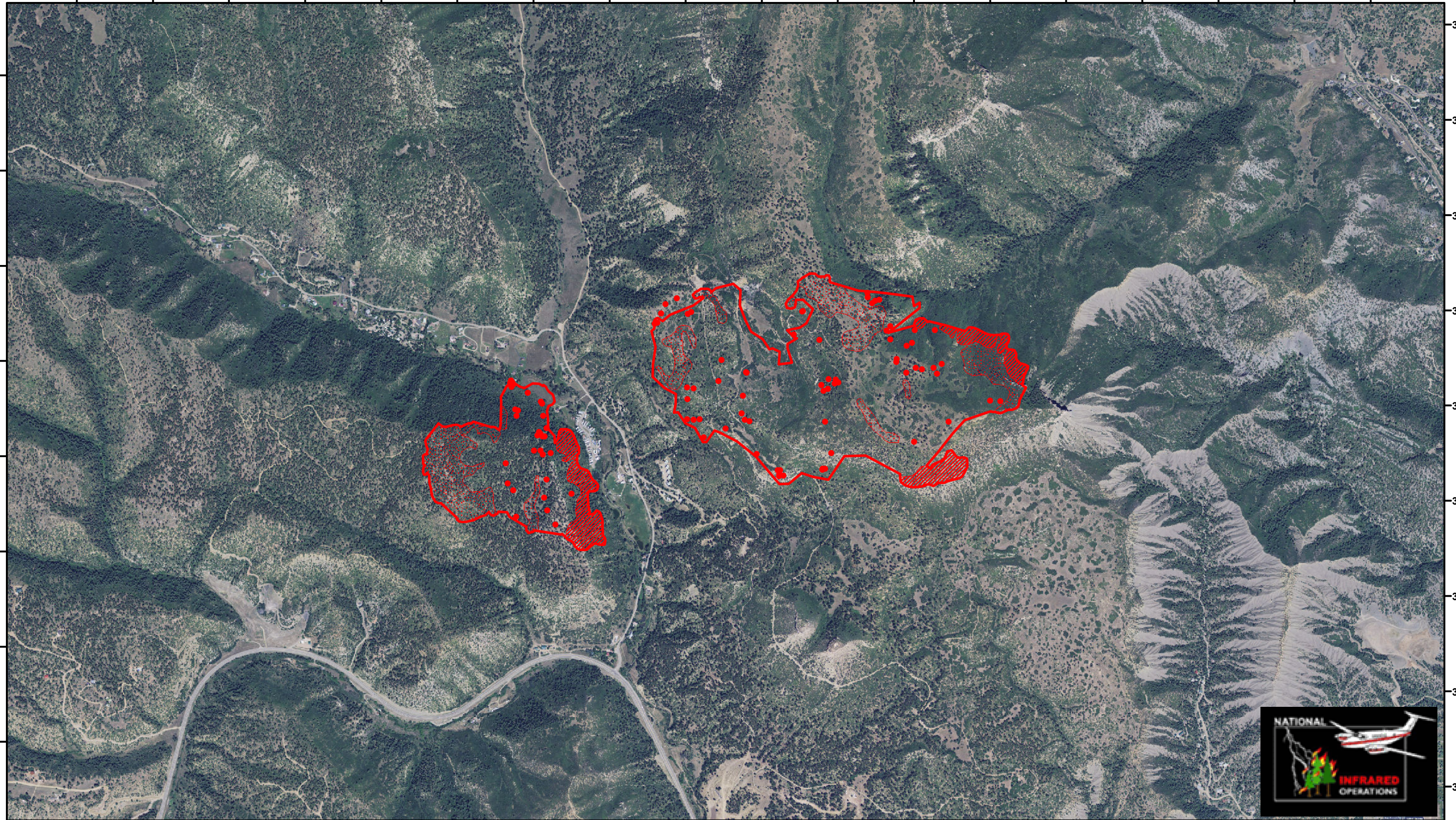



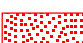


107°58'0"W 107°57'45"W 107°57'30"W 107°57'15"W 107°57'0"W 107°56'45"W 107°56'30"W 107°56'15"W 107°56'0"W 107°55'45"W 107°55'30"W 107°55'15"W 107°55'0"W 107°54'45"W 107°54'30"W 107°54'15"W 107°54'0"W 107°53'45"W

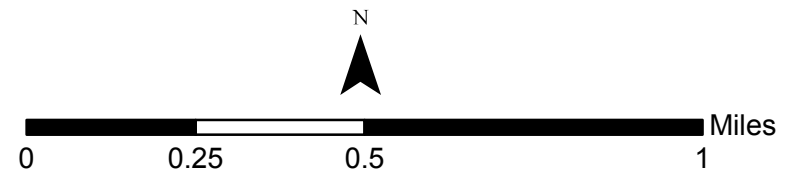
37°18'15"N
37°18'0"N
37°17'45"N
37°17'30"N
37°17'15"N
37°17'0"N
37°16'45"N
37°16'30"N

37°18'30"N
37°18'15"N
37°18'0"N
37°17'45"N
37°17'30"N
37°17'15"N
37°17'0"N
37°16'45"N
37°16'30"N



Legend

 Heat Perimeter	 Scattered Heat Source
 Intense Heat	 Isolated Heat Source



Lightner Creek
Incident # - CO-LPX-000459
Infrared Imagery Map
Imagery Flown: June 30, 2017 - 0339 (MDT)
Interpreted Acres: 397 Acres
IRIN: Bob Brantlinger

107°58'0"W 107°57'45"W 107°57'30"W 107°57'15"W 107°57'0"W 107°56'45"W 107°56'30"W 107°56'15"W 107°56'0"W 107°55'45"W 107°55'30"W 107°55'15"W 107°55'0"W 107°54'45"W 107°54'30"W 107°54'15"W 107°54'0"W 107°53'45"W 107°53'30"W