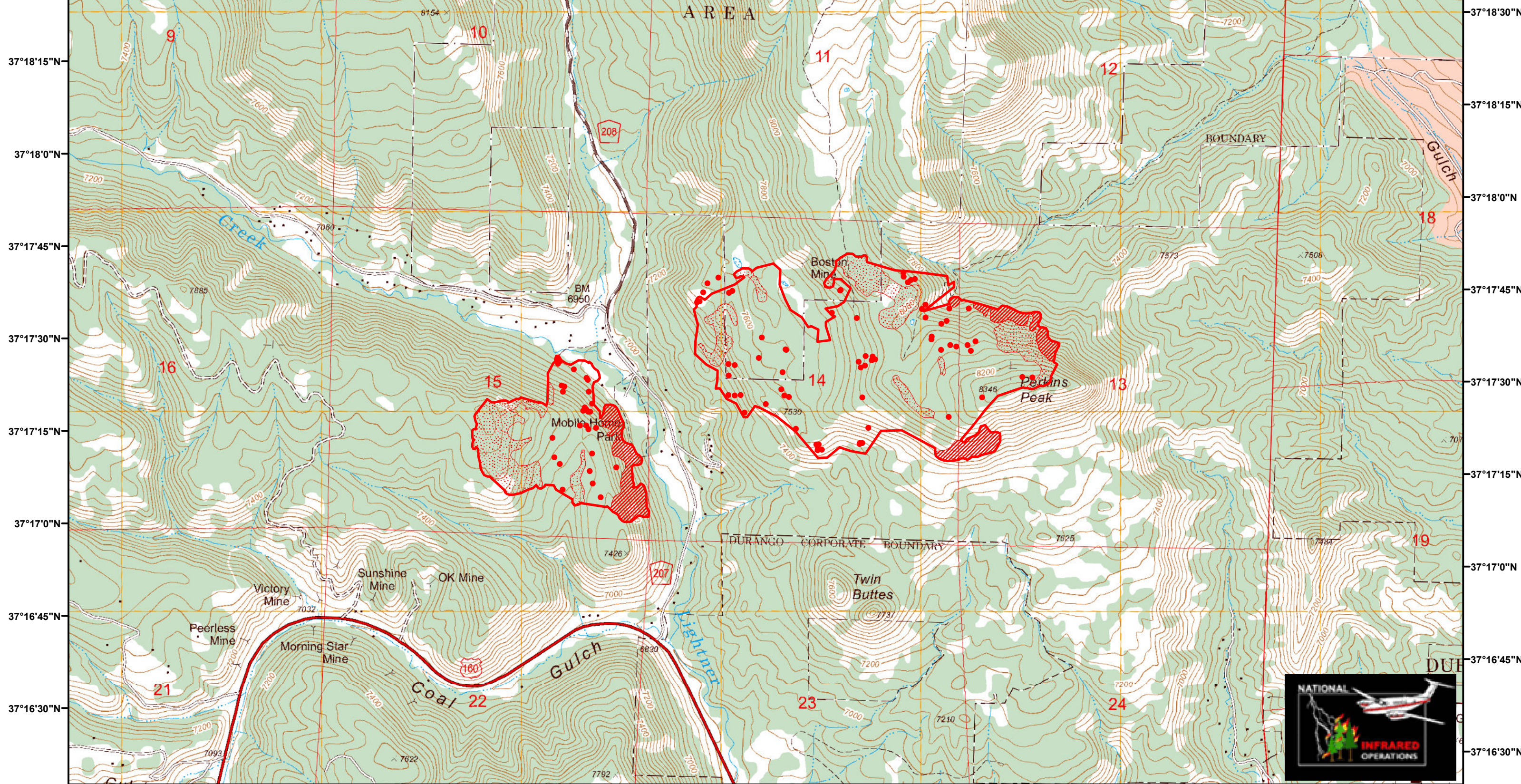
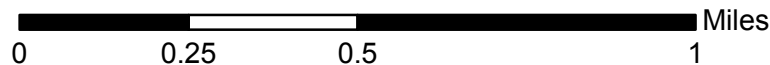


107°58'0"W 107°57'45"W 107°57'30"W 107°57'15"W 107°57'0"W 107°56'45"W 107°56'30"W 107°56'15"W 107°56'0"W 107°55'45"W 107°55'30"W 107°55'15"W 107°55'0"W 107°54'45"W 107°54'30"W 107°54'15"W 107°54'0"W 107°53'45"W



**Legend**

- Heat Perimeter
- Scattered Heat Source
- Intense Heat
- Isolated Heat Source



**Lightner Creek**  
**Incident # - CO-LPX-000459**  
**Infrared Imagery Map**  
**Imagery Flown: June 30, 2017 - 0339 (MDT)**  
**Interpreted Acres: 397 Acres**  
**IRIN: Bob Brantlinger**

107°58'0"W 107°57'45"W 107°57'30"W 107°57'15"W 107°57'0"W 107°56'45"W 107°56'30"W 107°56'15"W 107°56'0"W 107°55'45"W 107°55'30"W 107°55'15"W 107°55'0"W 107°54'45"W 107°54'30"W 107°54'15"W 107°54'0"W 107°53'45"W