

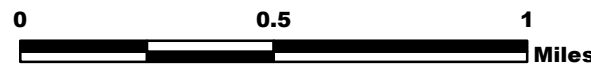
PEAK 2 FIRE CO-WRF-236

Structure Ops. Map 7/10/17

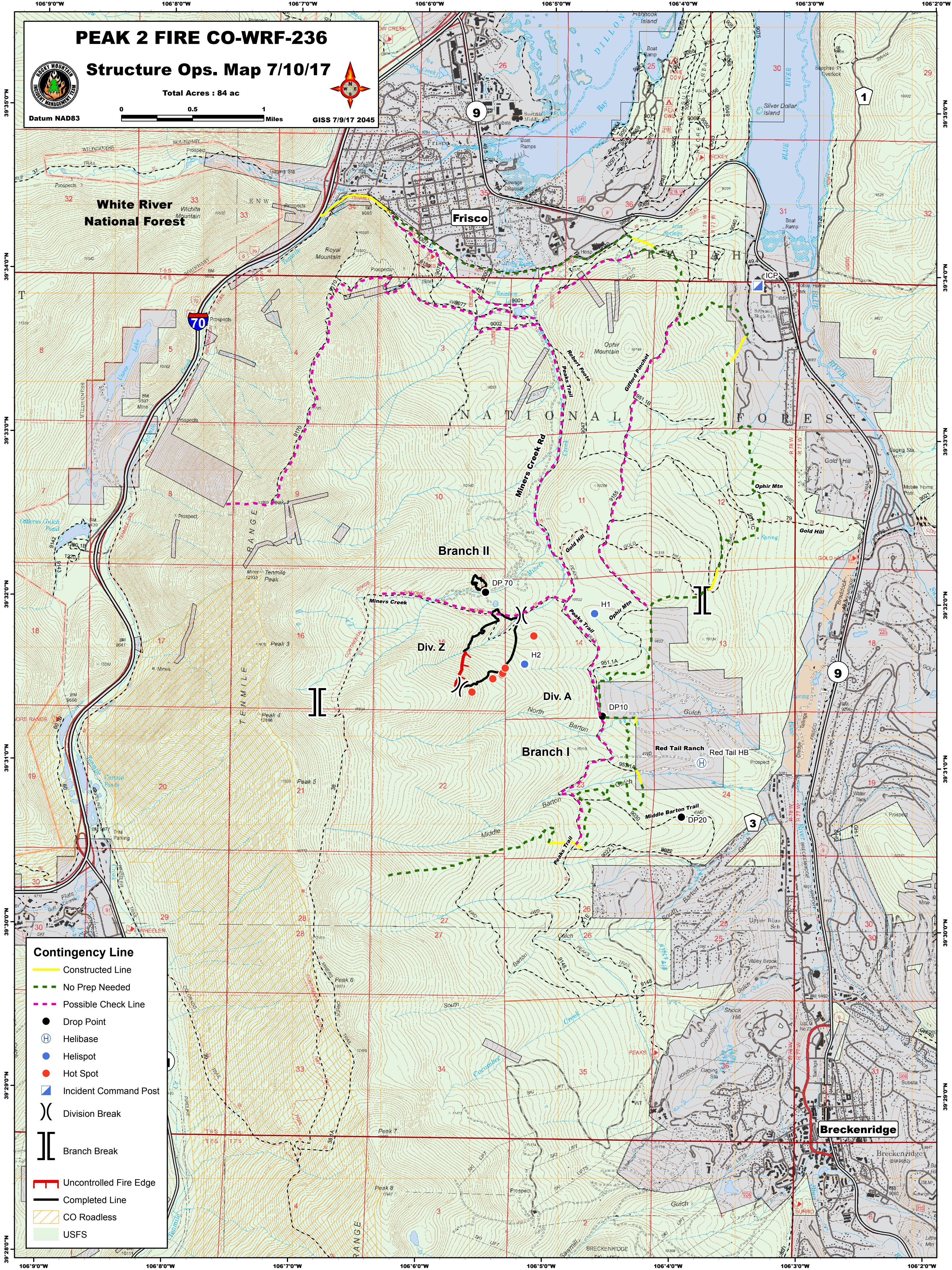
Total Acres : 84 ac



Datum NAD83



GISS 7/9/17 2045



Contingency Line

- Constructed Line
- No Prep Needed
- Possible Check Line
- Drop Point
- Helibase
- Helispot
- Hot Spot
- Incident Command Post
- Division Break
- Branch Break
- Uncontrolled Fire Edge
- Completed Line
- CO Roadless
- USFS