

PEAK 2 FIRE

INCIDENT ACTION PLAN

CO-WRF-000236 / K4BQ



Day Operational Period
FRIDAY, JULY 7, 2017
0600 - 2000

Rocky Mountain IMT1
Todd Pechota, Incident Commander
Dan Dallas, Deputy



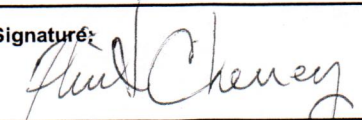
Link To Maps
GPS: UTM NAD83 ZONE 13N

This Page Intentionally Left Blank

INCIDENT OBJECTIVES (ICS 202)

1. Incident Name:		2. Operational Period: DAY	
PEAK 2		Date/Time From: 07/07/2017 0600 FRI	Date/Time To: 07/07/2017 2100 FRI
3. Objective(s):			
<p>Plan and execute all suppression activities to manage risk and exposure to firefighters and the public.</p> <p>Keep the fire west of the Peaks Trail to prevent fire spread down into the urban interface.</p> <p>Keep the fire from impacting Miners Creek to the degree possible to prevent water quality degradation. Miners Creek flows into Lake Dillon, which supplies Denver with drinking water.</p> <p>Utilize roads, trails, drainages, and other natural features to prevent fire spread north into Frisco and south in Breckenridge, or the Breckenridge ski area.</p> <p>Prevent fire spread west of the Ten Mile Ridge crest.</p> <p>If the fire crosses the Peaks Trail to the east, create control lines that incorporate existing fuels treatments west of Highway 9.</p>			
4. Operational Period Command Emphasis:			
Go slow, be deliberate, and don't over-extend.			
General Situational Awareness:			
<p>Erratics winds with thunderstorms.</p> <p>Snags are an ever-present danger.</p>			
5. Site Safety Plan Required? Yes <input type="checkbox"/> No <input checked="" type="checkbox"/>			
Approved Site Safety Plan(s) Located at:			
6. Incident Action Plan (the items checked below are included in this Incident Action Plan):			
<input checked="" type="checkbox"/> ICS 202	<input type="checkbox"/> ICS 207	Other Attachments:	
<input checked="" type="checkbox"/> ICS 203	<input checked="" type="checkbox"/> ICS 208	<input checked="" type="checkbox"/> EVACUATION PROCEDURES	
<input checked="" type="checkbox"/> ICS 204	<input checked="" type="checkbox"/> ICS 220	<input type="checkbox"/> _____	
<input checked="" type="checkbox"/> ICS 205	<input checked="" type="checkbox"/> Map/Chart	<input type="checkbox"/> _____	
<input type="checkbox"/> ICS 205A	<input checked="" type="checkbox"/> Weather Forecast/Tides/Currents	<input type="checkbox"/> _____	
<input checked="" type="checkbox"/> ICS 206			
7. Prepared by: FLINT CHENEY		Position/Title: PSC1	Signature: <i>Flint Cheney</i>
8. Approved by Incident Commander:		Name: TODD PECHOTA	Signature: <i>Todd Pechota</i>
ICS 202		IAP Page	Date/Time: 07/06/2017 2300

ORGANIZATION ASSIGNMENT LIST (ICS 203)

1. Incident Name:		2. Operational Period: DAY	
PEAK 2		Date/Time From: 07/07/2017 0600	Date/Time To: 07/07/2017 2100 FRI
3. Incident Commander(s) and Command Staff:		MEDICAL UNIT	BONNIE GIBBONS
IC/UC	TODD PECHOTA	SECURITY UNIT	DAVE CLARK
DEPUTY	DAN DALLAS	FOOD UNIT	LINDA GUY / GWEN TALLMADGE (F)
SAFETY OFFICER	KEITH LONG; DAVE VITWAR	7. Operations Section:	
INFORMATION OFFICER	BRENDA BOWEN; DAVID BOYD	DAY OPS SECTION CHIEF	
LIAISON OFFICER	TAMMY RANDALL-PARKER	NIGHT OPS SECTION CHIEF	
4. Agency/Organization Representative(s):		PLANNING OPS	JON TEUTRINE
Agency/Organization	Name	OPS SECTION CHIEF	ERIC ZANOTTO
USFS (AGENCY ADMINISTRATOR)	LISA STOEFFLER KEVIN WARNER; ADAM BIANCHI	DEPUTY OPS SECTION CHIEF	
RED, WHITE & BLUE FIRE	JIM KEATING	STAGING AREA	
SUMMIT COUNTY SHERIFF	LESLEY MUMFORD; JOEL COCHRAN	Branch I	
BRECKENRIDGE POLICE DEPARTMENT	NICOLA ERB	BRANCH DIRECTOR	MIKE TOMBOLATO
LAKE DILLON FIRE	JEFF BERINO	DEPUTY	
FRISCO POLICE DEPARTMENT	TOM WICKMAN	DIVISION/GROUP A	FRANK KEELER ANDY WHITE (T)
EMERGENCY MANAGER	JONATHAN DIURBA	DIVISION/GROUP BRECKENRIDGE STRUCTURE	TIM DALY
5. Planning Section:		DIVISION/GROUP	
CHIEF	STEVE PETERSBURG	Branch II	
DEPUTY	FLINT CHENEY	BRANCH DIRECTOR	Matt Spring
RESOURCES UNIT	DAVE RITCHIE; NANCY BAYNE (T)	DEPUTY	
SITUATION UNIT	AMY HAM	DIVISION/GROUP Z	JEROD DELAY CHAD LEWIS (T)
DOCUMENTATION UNIT	WENDY LEYSHOCK	DIVISION/GROUP FRISCO STRUCTURE	SCOTT CAMPBELL ERIC WHITE (T)
DEMOBILIZATION UNIT		DIVISION/GROUP	
FIRE BEHAVIOR ANALYST	GLEN LEWIS	7b. Air Operations Branch:	
HUMAN RESOURCE SPECIALIST		AIR OPS BRANCH DIRECTOR	JASON HOFMAN
TRAINING SPECIALIST		AIR ATTACK SUPERVISOR	JARED HOHN
GIS SPECIALIST	TONY SMITH; KEN OSTROM	AIR SUPPORT SUPERVISOR	STEVE DAVIS
TECHNOLOGY SUPPORT SPECIALIST	MARTY KREPFL	HELICOPTER COORDINATOR	
INCIDENT METEOROLOGIST		AIR TANKER COORDINATOR	
6. Logistics Section:		8. Finance/Administration Section:	
CHIEF	VAN CHANAY	CHIEF	DAVID LUCAS
DEPUTY	CHUCK HAMILTON	DEPUTY	JANELL RAY
SUPPLY UNIT	MELISSA HUNTER / ROY SPENCER	TIME UNIT	GLENDA LINDSAY
FACILITIES UNIT	JOHN BLIVEN; KEITH PLAGEMANN	PROCUREMENT UNIT	
GROUND SUPPORT UNIT	RICK BARRETT / BRIAN STEVENS (F)	COMPENSATION UNIT	CASEY WARREN
COMMUNICATIONS UNIT	BARRY MATHIAS	COST UNIT	KATHY SUTPHEN
9. Prepared By:	Name: DAVE RITCHIE	Position/Title: RESL	Signature: 
ICS 203	IAP Page	Date/Time: 07/06/2017 2330	

Spot Weather Forecast

FRIDAY July 7, 2017, issued 7-6-2017

Sky/weather.....Partly cloudy(30-40%) until 0800, then mostly sunny until 1000, then partly cloudy(40-50%) until 1300, then mostly cloudy. Slight chance of thunderstorms after 1100 until 1200, then chance of thunderstorms.

CWR.....0 percent increasing to 15 percent in the afternoon.

LAL.....1 until 1100, then 2 until 1200, then 4.

Max temperature.....Around 72.

Min humidity.....22%.

Wind (20 ft).....West winds 5-6 mph until 1200. northeast 4-8 mph after 1500. Gusty and erratic winds expected near thunderstorms after 1100.

Mixing height.....1500 ft AGL until 0700. 13100-14100 ft AGL after 1100.

Transport winds.....Northwest 10-15 mph.

Smoke dispersal.....Poor until 0800, then fair until 0900, then good until 1000, then very good until 1700, then good.

Haines Index.....4 low.

.FORECAST DAYS 3 THROUGH 5...

.**SATURDAY**...

Partly cloudy. Chance of thunderstorms. Lows in the mid 40s. Highs around 70. West winds around 5 mph.

.**SUNDAY**...

Partly cloudy. Slight chance of thunderstorms. Lows in the mid 40s. Highs in the lower 70s. Southwest winds around 5 mph.

.**MONDAY**...

Partly cloudy. Slight chance of thunderstorms. Lows in the mid 40s. Highs in the mid 70s. West winds 5-6 mph.



BEHAVIOR FORECAST

Forecast #1 Incident: Peak 2

Prediction for: Day Operational Period 7/07/17

Issued: 7/06/17, 2100 hrs

by:  Glen Lewis, FBAN

Fire Behavior:

General:

Weather and fuel conditions today are very similar to yesterday. Primary fire spread today will be through surface fuels, and group torching when aligned with wind and slope. Low to moderate fire spread is possible in the late afternoon and will be somewhat dependent on cloud cover. The smoldering fires within burn areas will continue to pop up when humidity drops and sunlight hits the receptive fuels. Stay in tune with Diurnal wind patterns in relation to the terrain influences of the general flow and how that affects the fire behavior.

The beetle kill and dry fuels will burn actively in the absence of cloud cover and active crown fire potential exists when winds increase. Key weather factors for extreme fire behavior to watch for will be RH's below 15%, temperatures above 80, and winds greater than 12 MPH. Be especially alert to thunderstorms in the area, the associated winds will cause a rapid transition from surface fire to crown fire. Expect spotting in the duff and heavy fuels with any torching

Specific:

The fire will continue to spread through surface fuels under the timber once the temperature begins to rise. Short head fires are possible when aligned with slope. Expect mostly surface fire in the timbered areas with flame lengths 1-3 feet and rates of spread 1-6 chains per hour.

Torching potential is moderate and spotting potential is high due to receptive fuels. Spotting will be mostly short range. The exception is spotting due to crown runs, which could be greater than 1/3 mile.

Maximum probability of ignition this afternoon is 60-75%.

As fire activity picks up in the afternoon, occasional tree torching is likely, but most spotting will be short range and will burn at moderate intensity given slope and wind alignment.

Safety:

Remember the watch out situation

“Recognize current weather conditions and obtain forecasts.” Continue to monitor field weather observations and maintain situational awareness.

Division/Group Assignment List (ICS 204 WF)

1. Incident Name:		3.				
PEAK 2		Branch: I		Division/Group: A		
2. Operational Period: DAY						
Date/Time From: 07/07/2017 0600 FRI		Date/Time To: 07/07/2017 2100 FRI				
4. Operations Personnel						
OPERATIONS CHIEF		ERIC ZANOTTO JON TEUTRINE		BRANCH DIRECTOR		
				MIKE TOMBOLATO		
DIVISION/GROUP SUPERVISOR		FRANK KEELER ANDY WHITE (T)		AIR ATTACK SUPERVISOR		
				JARED HOHN		
5. Resources Assigned this Period						
Strike Team / Task Force / Resource Designator	LWD	Leader	Number Persons	Drop Off PT./Time	Pick Up PT./Time	
LONE PEAK IHC		DARREN O'LOUGHLIN	21			
LOST RIVER T2IA		AARON VASILIS	20			
SOF2 LARRY KLOCK						
EMPF CHRISTOPHER PATTINSON						
6. Control Operations/Work Assignments:						
TASK: Continue to scout opportunities to construct line only when hazards can be safely mitigated or avoided. Scout work acres prior to engaging.						
PURPOSE: Protect structures and infrastructure in the Peak 7 subdivision, Red Tail Ranch, Breckenridge Ski Resort, and the park trail.						
7. Special Instructions:						
AIR OPERATION Needs and Support: Support direct line construction. Priority 2.						
COMMUNICATIONS: Refer to Communication Plan.						
8. Division/Group Communication Summary						
Function	Channel	RX Frequency N/W	RX Tone/NAC	TX Frequency N/W	TX Tone/NAC	Mode
COMMAND						
TACTICAL						
LOGISTICS						
AIR TO GROUND						
9. Prepared By (Resource Unit Leader)		Approved By (Planning Section Chief)		Date	Time	
DAVE RITCHIE		FLINT CHENEY <i>Flint Cheney</i>		07/07/2017	0000	

Division/Group Assignment List (ICS 204 WF)

1. Incident Name:			3.				
PEAK 2			I	Branch:		Division/Group:	
2. Operational Period: DAY				BRECKENRIDGE STRUCTURE			
Date/Time From: 07/07/2017 0600 FRI		Date/Time To: 07/07/2017 2100 FRI					
4. Operations Personnel							
OPERATIONS CHIEF		ERIC ZANOTTO JON TEUTRINE		BRANCH DIRECTOR		MIKE TOMBOLATO	
DIVISION/GROUP SUPERVISOR		TIM DALY		AIR ATTACK SUPERVISOR		JARED HOHN	
5. Resources Assigned this Period							
Strike Team / Task Force / Resource Designator		LWD	Leader	Number Persons	Drop Off PT./Time	Pick Up PT./Time	
BRECKENRIDGE E5 T3 RED, WHITE, & BLUE			MATT BENEDICT	4			
BRECKENRIDGE 609 T6			DEREK GOOSSEN	3			
AURORA BRUSH 13 T6			CAMERON REITER	3			
DENVER 602 T6			JAY MCCANN	3			
LAKE DILLON WILDLAND 8 T6			STEVE WANTUCK	3			
CARBONDALE 81 T6			DEAN PERKINS	3			
CHAFFEE CO WTT1			VERN PLACKNER	2			
6. Control Operations/Work Assignments:							
TASK: Assess structures in the Peak 7, Red Tail Ranch, and Breckenridge Ski Resort. Locate water sources, ingress/ egress routes.							
PURPOSE: Prepare plans to defend structures should the fire impact values at risk.							
7. Special Instructions:							
Utilize numbers 30 thru 59 for labeling drop points.							
AIR OPERATION Needs and Support: Structure protection. Priority 1.							
COMMUNICATIONS: Reference Communication Plan.							
SPECIAL EQUIPMENT NEEDS: Resources assigned to structure are assigned to support initial attack within designated area. Review maps and program radios with initial attack frequencies.							
ADDITIONAL RESOURCES FOR SEC. 5							
E-67 WT		NATE VOORHEES		C-30 GE FORESTRY ESTABAN GONZALES			
E-16 T6		REES BECK					
E-25 T4		MIKE SPECHT					
8. Division/Group Communication Summary							
Function	Channel	RX Frequency N/W	RX Tone/NAC	TX Frequency N/W	TX Tone/NAC	Mode	
COMMAND							
TACTICAL							
LOGISTICS							
AIR TO GROUND							
9. Prepared By (Resource Unit Leader)			Approved By (Planning Section Chief)		Date	Time	
DAVE RITCHIE			FLINT CHENEY <i>Flint Cheney</i>		07/07/2017	0000	

Division/Group Assignment List (ICS 204 WF)

1. Incident Name:		3.				
PEAK 2		II	FRISCO STRUCTURE			
2. Operational Period:		Branch:				
DAY		FRISCO				
Date/Time From: 07/07/2017 0600 FRI	Date/Time To: 07/07/2017 2100 FRI					
4. Operations Personnel						
OPERATIONS CHIEF	ERIC ZANOTTO	BRANCH DIRECTOR	MATT SPRING			
DIVISION/GROUP SUPERVISOR	SCOTT CAMPBELL ERIC WHITE (T)	AIR ATTACK SUPERVISOR	JARED HOHN			
5. Resources Assigned this Period						
Strike Team / Task Force / Resource Designator	LWD	Leader	Number Persons	Drop Off PT./Time	Pick Up PT./Time	
NATIONAL WILDLAND FIRE E4 T4		AARON MANDEL	3			
VAIL BRUSH 3 T6		ERIC WASDORP	4			
SNOWMASS 94 T6		PAUL BLANGSTED	3			
FOUNTAIN 243 T6		JAMES ORTA	3			
THORTON FD E670 T6		MATT COKEWELL	3			
6. Control Operations/Work Assignments:						
TASK: Asses structures in the Gold Hill, South Frisco areas. Locate water sources, ingress/egress routes. Scout Temple trail from I-70 East to Hospital to Highway 9 for potential burnout operations.						
PURPOSE: Prepare plans to defend structures should the fire impact values at risk.						
7. Special Instructions:						
Utilize numbers 60 thru 90 for labeling drop points.						
AIR OPERATION Needs and Support: Structure protection. Priority 1.						
COMMUNICATIONS: Refer to Communication Plan.						
SPECIAL EQUIPMENT NEEDS: Resources assigned to structure are assigned to support initial attack within designated area. Review maps and program radios with initial attack frequencies.						
ADDITIONAL RESOURCES FOR SEC. 5						
E-68 WT CLYDE STONAKER						
E-69 WT BRIAN DURAN						
E-15 T6 BOB VIGER						
C-31 T2 PEDRO CHAPARRO						
8. Division/Group Communication Summary						
Function	Channel	RX Frequency N/W	RX Tone/NAC	TX Frequency N/W	TX Tone/NAC	Mode
COMMAND						
TACTICAL						
LOGISTICS						
AIR TO GROUND						
9. Prepared By (Resource Unit Leader)		Approved By (Planning Section Chief)		Date	Time	
DAVE RITCHIE		FLINT CHENEY <i>Flint Cheney</i>		07/07/2017	0000	

Division/Group Assignment List (ICS 204 WF)

1. Incident Name:		3.				
PEAK 2		Branch:	Division/Group:			
2. Operational Period: DAY		II	Z			
Date/Time From: 07/07/2017 0600	FRI	Date/Time To: 07/07/2017 2100	FRI			
4. Operations Personnel						
OPERATIONS CHIEF	ERIC ZANOTTO	BRANCH DIRECTOR	MATT SPRING			
DIVISION/GROUP SUPERVISOR	JEROD DELAY CHAD LEWIS (T)	AIR ATTACK SUPERVISOR	JARED HOHN			
5. Resources Assigned this Period						
Strike Team / Task Force / Resource Designator	LWD	Leader	Number Persons	Drop Off PT./Time	Pick Up PT./Time	
JUNPER VALLEY RIFLE - TYPE 2 HAND CREW		TODD SNYDER	20			
BOISE SMOKE JUMPERS		G. OKEFFE	8			
LAKEVIEW HELITACK		ERIC WOLF	18			
6. Control Operations/Work Assignments:						
TASK: Continue to scout opportunities to construct line only where hazards can be safely mitigated or avoided. Scout work areas prior to engaging.						
PUPOSE: Protect values at risk including structures and infrastructure in the Gold Hill, South Frisco, Peaks Trail, Aspen Trail, & Colorado Trail.						
7. Special Instructions:						
AIR OPERATION Needs and Support: Support direct line construction. Priority 3.						
COMMUNICATIONS: Refer to Communication Plan.						
8. Division/Group Communication Summary						
Function	Channel	RX Frequency N/W	RX Tone/NAC	TX Frequency N/W	TX Tone/NAC	Mode
COMMAND						
TACTICAL						
LOGISTICS						
AIR TO GROUND						
9. Prepared By (Resource Unit Leader)		Approved By (Planning Section Chief)		Date	Time	
DAVE RITCHIE		FLINT CHENEY <i>Flint Cheney</i>		07/07/2017	0000	

Division/Group Assignment List (ICS 204 WF)

1. Incident Name:				3.			
PEAK 2				Branch:		Division/Group:	
2. Operational Period: DAY				NIGHT SHIFT			
Date/Time From: 07/07/2017 0600 FRI		Date/Time To: 07/07/2017 2100 FRI					
4. Operations Personnel							
OPERATIONS CHIEF		ERIC ZANOTTO JON TEUTRINE		BRANCH DIRECTOR			
DIVISION/GROUP SUPERVISOR		TBD		AIR ATTACK SUPERVISOR			
5. Resources Assigned this Period							
Strike Team / Task Force / Resource Designator		LWD	Leader	Number Persons	Drop Off PT./Time	Pick Up PT./Time	
GRAND 340 T6			PAUL MINETIER	4			
VAIL BRUSH 3 T6			ERIC WASDORP	4			
6. Control Operations/Work Assignments:							
TASK: Monitor fire conditions and respond to new starts within IA zone.							
7. Special Instructions:							
COMMUNICATIONS: Refer to Communications Plan.							
SPECIAL EQUIPMENT NEEDS: Resources assigned to structure are assigned to support initial attack within designated area. Review maps and program radios with initial attack frequencies.							
8. Division/Group Communication Summary							
Function	Channel	RX Frequency N/W	RX Tone/NAC	TX Frequency N/W	TX Tone/NAC	Mode	
COMMAND							
TACTICAL							
LOGISTICS							
AIR TO GROUND							
9. Prepared By (Resource Unit Leader)			Approved By (Planning Section Chief)		Date	Time	
DAVE RITCHIE			FLINT CHENEY <i>Flint Cheney</i>		07/07/2017	0000	

Summit County Evacuation Procedures

Evacuation

- The Incident Management Team (IMT) recommends evacuation areas, identified by creating a boundary within roads or subdivisions.
 - IMT identifies whether evacuations are in a 'pre-evacuation' or a 'evacuation' status
- IMT contacts the Undersheriff, or liaison at the ICP, for all evacuation request. If the IC is unable to immediately contact the law or fire liaisons at the Incident Command Post, contact the Summit County Communications Center 911 Dispatch (SCCC 911) at 970-668-8301 and request that jurisdictional supervisors be contacted with the evacuation requests.
- Law and Fire coordinate evacuations based upon the preplanned Multi-Hazards Evacuation Plan to a predetermined evacuation point.
- Fire and Law IC will request SCCC 911 send a Summit County Alert via CodeRed for the area to be evacuated. The Joint Information Center (JIC) will publish information containing; evacuation orders, coordinated messages, and phone numbers for questions. JIC will follow the Multi-Hazard Evacuation Plan objectives on page 5.
- Local fire departments, law enforcement and structure protection group will conduct door to door evacuations of neighborhoods.
- Local fire departments, law enforcement and structure protection group, as time permits will utilize colored-coded flagging for identifying areas evacuated.
- All evacuees are requested to proceed to the designated evacuation point.

Re-Entry

- The Incident Commander will make an official request for evacuation orders to be lifted, along with identifying the areas that are still in a 'pre-evacuation' status.
- Once the evacuation is lifted, JIC and Law will coordinate a reentry plan in conjunction with the Summit County Office of Emergency Management (SC OEM) and the IMT.

Timeframes for Evacuations:

- **Farmers Korner (Alpensee, Lakeview Meadows, Farmers Grove) 2 Hours**
- **Gold Hill - 2 Hours**
- **Peak 7 – 4 Hours**
- **Silver Shekel – 2 Hours**
- **Highlands - 4 Hours**
- **Bills Ranch – 2 hours**

AIR OPERATIONS SUMMARY

Prepared by: Jason Hofman AOB

Prepared Date: 7/6/2017

Prepared Time: 18:00

1. INCIDENT NAME: Peak 2 Fire	2. OPS PERIOD DATE: 7/7/17	START TIME: 0800	END TIME: 2100	SUNRISE: 0544	SUNSET TIME: 2034
3. REMARKS: (Safety Notes), SEE AND AVOID, GENERAL AVIATION TRAFFIC AND AERIAL HAZARDS *CONG Aircraft will be staging out of Eagle Airport *Logistical/support missions can be scheduled directly DIVS Grand Junction Dispatch 970-257-4800 gjcdispatch@gmail.com E-MAIL AIRCRAFT COSTS DAILY TO: rmt1finance@gmail.com			4. READY ALERT AIRCRAFT All Medivacs will be coordinated by DIVS Medical aircraft – See ICS 205	5. TFR: 7/5422 Air to Air Fix Wing 126.4500 TFR Freq. Altitude: 14000 feet MSL 0800-2100 operational	

6. PERSONNEL	NAME	PHONE #	7. FREQUENCIES	AM	FM	8. FIXED-WING- Type/ Make-Model/ N#/ Base
AOBD	Jason Hofman	970-549-7996	A/A Fixed - TFR A/A Rotor	126.4500 132.6250		AIR ATTACK – ATGS Jared Hohn 605-673-7935 TBD ATGS Tyler Doggett 208-867-0493 2GA E-90
ASGS ASGS(t)	Steve Davis Corey Lewis	605-440-2122 605-517-9042				
Red Tail Helibase HEB2 66HJ 205++ 526MW K-Max	Doug Paul	970-623-6183	A/G A/G		168.5025 168.3750	LEAD- As needed ordered by the ATGS SEATS- As needed ordered by the ATGS TANKERS- As needed ordered by the ATGS
Eagle Airport Military Liason HT-718	Rowdy Wood Scott Nutt	970-759-5574 970-218-0918				A good plan violently executed now is better than a perfect plan executed next week. –George Patton
			Air Guard		168.625 (110.9)	Red Tail City Helibase Lat: 39° 31.02 N Long: 106° 03.78 W Elev: 9700' Eagle Airport-EGE Lat: 39° 38.50 N Long: 106° 55.00 W Elev: 6550'

Communications Plan	1. FIRE NAME	2. DATE/TIME	3. OPERATIONAL PERIOD
	Peak 2	6 July 2017 20:00	7 July 2017 06:00 - 21:00

4. BASIC RADIO CHANNEL UTILIZATION

Ch #	Function	Channel Name	Assignment	RX Frequency	RX Tone/NAC	TX Frequency	TX Tone/NAC	Mode Digital (D) Analog (A)	Remarks
1	Command	Lake Hill	Command	171.2625		164.7000	123.0		
2	Tactical	BLM Tac 7	Division A	169.2875		169.2875			
3	Tactical	vFIRE 23	Division Z	154.2950		154.2950	156.7		
4	Tactical	vFIRE 21	Breckenridge Structure	154.2800		154.2800	156.7		
5	Tactical	vTAC 14	Frisco Structure	159.4725		159.4725	156.7		
6	A/G	A/G	Air to Ground	168.3750		168.3750			
16	Airguard	Airguard	Airguard	168.6250		168.6250			

5. I-205 Prepared By Joseph T. Matthews "Lynx" *JTM*

Special Notes: Colorado MAC 20 for contacting the Communications Unit if needed.
Any 800 radio on this incident should be on MAC 20 or Turned Off.

MEDICAL PLAN (ICS 206 WF)

1. Incident/Project Name				2. Operational Period					
Peak 2				7/7/2017 -7/7/2017					
3. Ambulance Services									
Name	Complete Address			Phone & EMS Frequency		Advanced Life Support (ALS) Yes No			
Summit County Ambulance	0227 Summit County Rd 1003 Frisco CO 80443			970-418-8139		yes			
St Anthony Hospital Critical Care Ground Ambulance	40 Peak One Dr. Frisco CO 80443			800-332-3123		yes			
4. Air Ambulance Services									
Name	Phone			Type of Aircraft & Capability					
Flight For Life	800-332-3123			A-star B3E Night Vision capable, 1 PT					
5. Hospitals									
Name Complete Address	GPS Datum – WGS 84 Coordinate Standard Degrees Decimal Minutes DD° MM.MMM' N - Lat DD° MM.MMM' W - Long		Travel Time Air Gnd		Phone		Helipad Yes No		Level of Care Facility
St Anthony Summit Ctr 340 Peak One Dr Frisco CO 80443	Lat:	39.569360		5min	15 min	979-668-3300	<input type="checkbox"/>	<input type="checkbox"/>	Level 3
	Long:	-106.078771							
	VHF:								
St Anthony Hospital 11600 West 2 nd Place Lake Wood CO 80228	Lat:	39.715888		25 min	90 min	720-321-0000	<input type="checkbox"/>	<input type="checkbox"/>	Level1
	Long:	-105.127936							
	VHF:								
University Hospital 1635 Aurora Ct. Aurora, CO 80045	Lat:	39.742219		30 min	120 min	720-848-000	<input type="checkbox"/>	<input type="checkbox"/>	Burn
	Long:	-104.842427							
	VHF:								
Vail Valley Medical Center 180 S. Frontage Rd West, Vail, CO. 81657	Lat:	39.644586		20 min	45 min	970-479-7225	<input type="checkbox"/>	<input type="checkbox"/>	Level 3
	Long:	-106.381532							
	VHF:								
6. Division Branch Group		Area Location Capability							
A		EMS Responders & Capability:				Paramedic			
		Equipment Available on Scene:				Wheeled Litter			
		Contact Summit Dispatch:				970-668-8600 970 668 8600			
		ETA for Ambulance:							
		To definitive care by Air:				5 min			
		To definitive care by Ground:				45 min			
		Approved Helispot:				Helispot 1			
				Lat:		39 31.924'			
		Long:		106 04.639'					
Z		EMS Responders & Capability:				Utilize on scene resources			
		Equipment Available on Scene:				UTV			
		Contact Summit Dispatch:				970-668-8600			
		ETA for Ambulance:							
		To definitive care by Air:				5 min			
		To definitive care by Ground:				40 min			
		Approved Helispot:				Helispot 1			
				Lat:		39 31.924'			
		Long:		106 04.639'					

MEDICAL PLAN (ICS 206 WF)

	EMS Responders & Capability:	
	Equipment Available on Scene:	
	Medical Emergency Channel:	
	ETA for Ambulance:	
	To definitive care by Air:	
	To definitive care by Ground:	
	Approved Helispot:	
	Lat:	
	Long:	
	EMS Responders & Capability:	
	Equipment Available on Scene:	
	Medical Emergency Channel:	
	ETA for Ambulance:	
	To definitive care by Air:	
	To definitive care by Ground:	
	Approved Helispot:	
	Lat:	
	Long:	
	EMS Responders & Capability:	
	Equipment Available on Scene:	
	Medical Emergency Channel:	
	ETA for Ambulance:	
	To definitive care by Air:	
	To definitive care by Ground:	
	Approved Helispot:	
	Lat:	
	Long:	

7. Name & Location	Remote Camp Location(s)		
ICP AID STATION Room 1403	Point of Contact:	Bonnie Gibbons	
	EMS Responders & Capability:	EMT Basic	
	Equipment Available on Scene:	BLS and AED	
	Medical Emergency Channel:		
	ETA for Ambulance:		
	To definitive care by Air:		
	To definitive care by Ground:		
	Approved Helispot:		
	Lat:		
	Long:		
	Point of Contact:		
	EMS Responders & Capability:		
	Equipment Available on Scene:		
	Medical Emergency Channel:		
	ETA for Ambulance:		
	To definitive care by Air:		
	To definitive care by Ground:		
	Approved Helispot:		
	Lat:		
Long:			
8. Prepared By (Medical Unit Leader)	9. Date/Time	10. Reviewed By (Safety Officer)	11. Date/Time
Bonnie Gibbons MEDL(T)	7/6/2017	Keith Long SOF1 <i>DAU</i>	7/6/2017

=HEALTH AND SAFETY MESSAGE

SAFETY starts with **YOU**

We are **ALL** accountable for **SAFE** behaviors

INCIDENT: Peak 2

DATE: July 7, 2017

TIME: Day & Night

Major Hazards and Risks:

- * Beetle Kill/Snags
- * Driving
- * Three C's
- * Situational Awareness

Fire Order of the Day - Obtain current information on fire status

Narrative:

- *Beetle Kill/Snags access the area, do you have other options?
- *Driving, high traffic areas slow down!
- *Three C's: Communication, Coordination, Cohesion
- * **SITUATIONAL AWARENESS** - *If your assignment does not have purpose and meaning and does not support meeting the objectives you should re-access the assignment.*

Look Up, Down and Around



Common Tactical Hazards

- *Poor communications due to rapidly emerging fire or an isolated area of a large fire.
- *Suppression resources are inadequate.
- *Escape route and safety zones poor
- *Unexpected weather changes
- *Wildland/urban interface operations.

Incident Safety Officers: Keith Long, Dave Vitwar, Larry Klock

DAV

PEAK 2 FIRE CO-WRF-236

IAP Map 7/7/17

MMA IR Perimeter as of 7/5/17 @ 2000 - 101 ac.



0 0.25 0.5 Miles GIS 7/6/17 2:10P



106°6'0"W

106°5'0"W

106°4'0"W

39°33'0"N

39°32'0"N

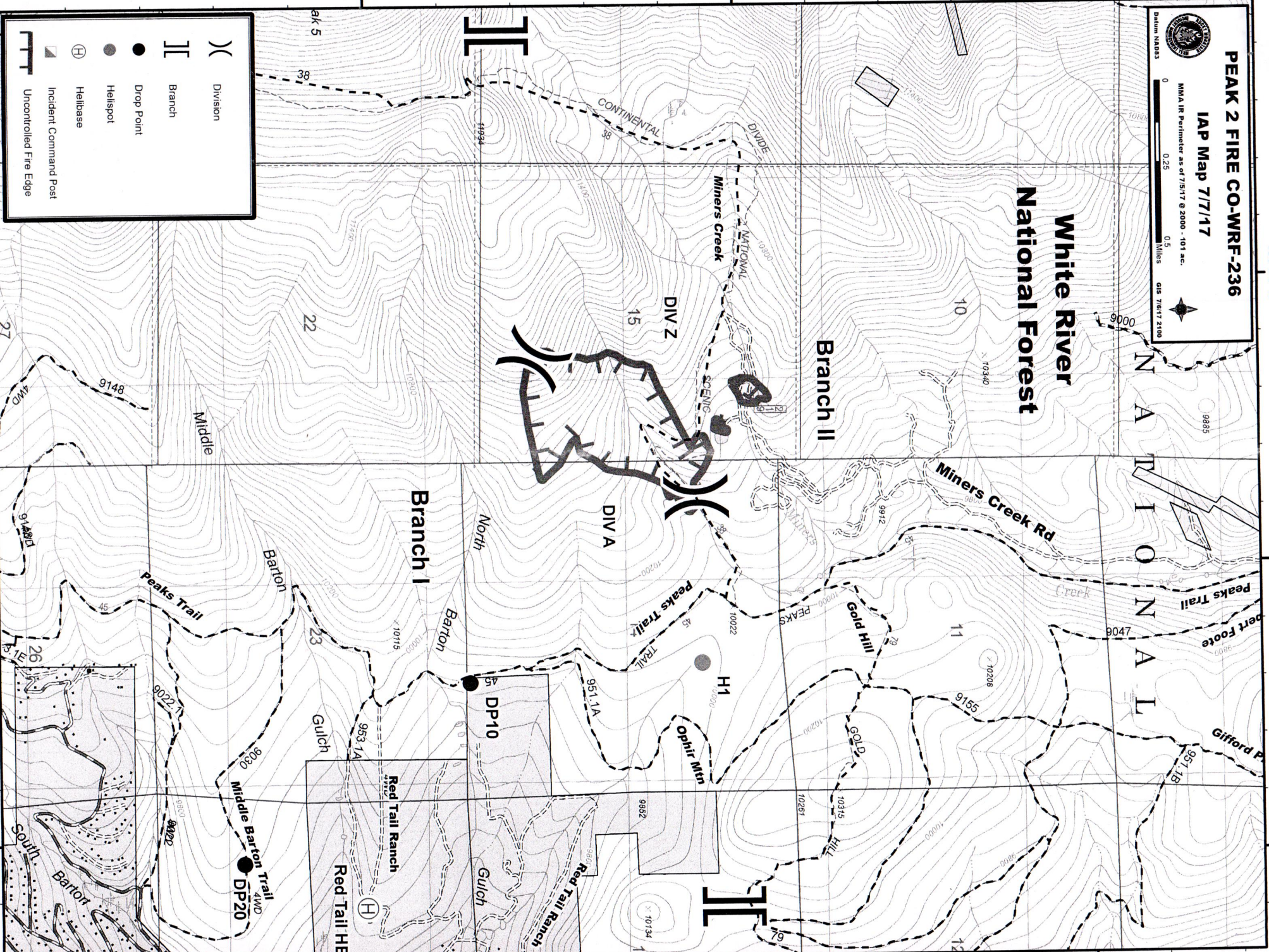
39°31'0"N

39°33'0"N

39°32'0"N

39°31'0"N

	Division
	Branch
	Drop Point
	Helispot
	Helibase
	Incident Command Post
	Uncontrolled Fire Edge



PEAK 2 FIRE CO-WRF-236

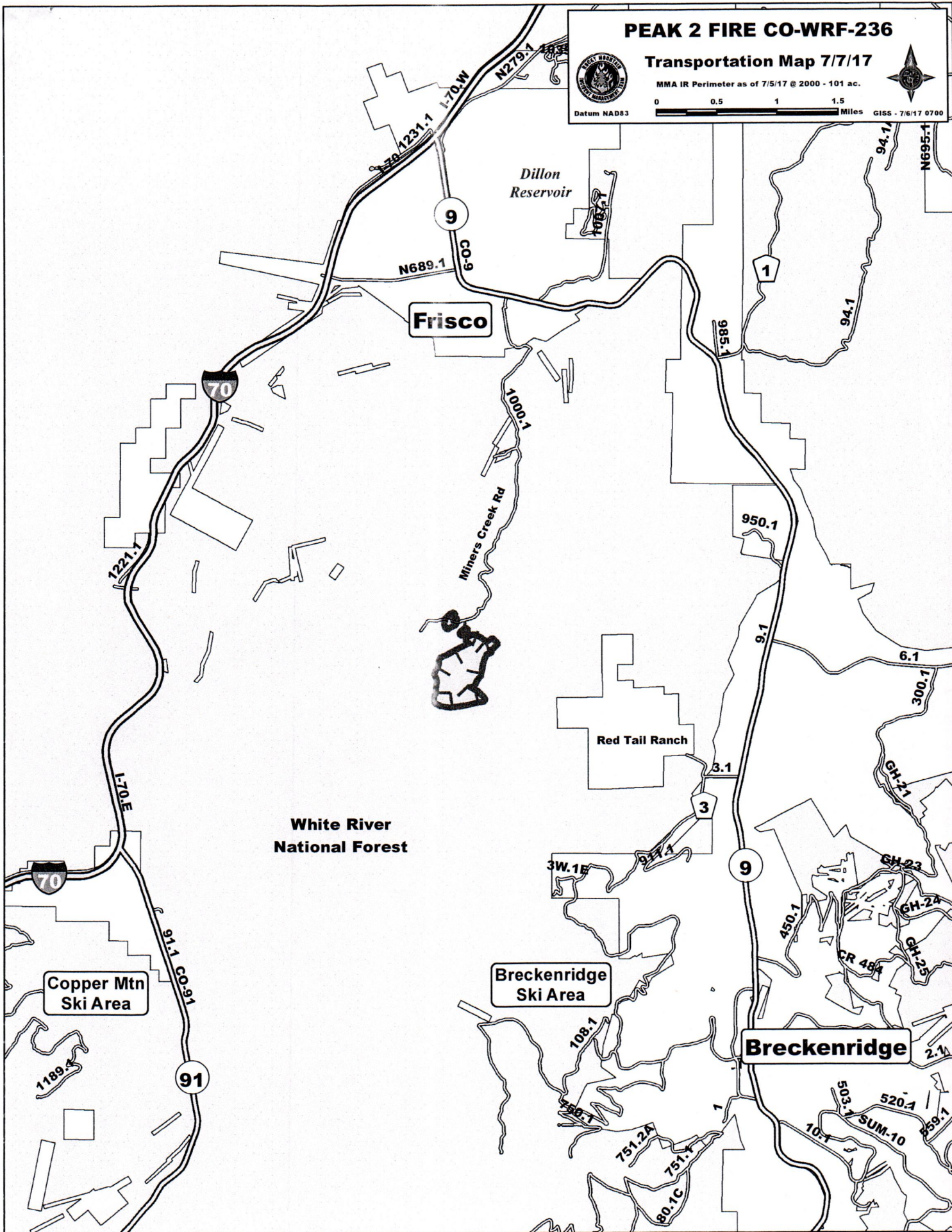
Transportation Map 7/7/17



MMA IR Perimeter as of 7/5/17 @ 2000 - 101 ac.



Datum NAD83 0 0.5 1 1.5 Miles GISS - 7/6/17 0700



MEDICAL PLAN (ICS 206 WF)

Medical Incident Report

FOR ALL MEDICAL EMERGENCIES: IDENTIFY ON SCENE INCIDENT COMMANDER BY NAME AND POSITION AND ANNOUNCE "MEDICAL EMERGENCY" TO INITIATE RESPONSE FROM IMT COMMUNICATIONS/DISPATCH.

Use items one through nine to communicate situation to communications/dispatch.

1. CONTACT COMMUNICATIONS/DISPATCH

Ex: "Communications, Div. Alpha. Stand-by for Priority Medical Incident Report." (If life threatening request designated frequency be cleared for emergency traffic.)

2. INCIDENT STATUS: Provide incident summary and command structure.

Nature of Injury/Illness		<i>Describe the injury (Ex: Broken leg with bleeding)</i>
Incident Name		<i>Geographic Name + "Medical" (Ex: Trout Meadow Medical)</i>
Incident Commander		<i>Name of IC</i>
Patient Care		<i>Name of Care Provider (Ex: EMT Smith)</i>

3. INITIAL PATIENT ASSESSMENT: Complete this section for each patient. This is only a brief, initial assessment. Provide additional patient info after completing this 9 Line Report.

Number of Patients:	Male / Female	Age:	Weight:
Conscious? <input type="checkbox"/> YES <input type="checkbox"/> NO = MEDEVACI		Breathing? <input type="checkbox"/> YES <input type="checkbox"/> NO = MEDEVACI	
Mechanism of Injury: <i>What caused the injury?</i>			
Lat/Long (Datum WGS84) <i>Ex: N 40° 42.45' x W 123° 03.24'</i>			

4. SEVERITY OF EMERGENCY, TRANSPORT PRIORITY

SEVERITY	TRANSPORT PRIORITY
<input type="checkbox"/> URGENT-RED Life threatening injury or illness. <i>Ex: Unconscious, difficulty breathing, bleeding severely, 2° – 3° burns more than 4 palm sizes, heat stroke, disoriented.</i>	Ambulance or MEDEVAC helicopter. Evacuation need is IMMEDIATE.
<input type="checkbox"/> PRIORITY-YELLOW Serious Injury or illness. <i>Ex: Significant trauma, not able to walk, 2° – 3° burns not more than 1-2 palm sizes.</i>	Ambulance or consider air transport if at remote location. Evacuation may be DELAYED.
<input type="checkbox"/> ROUTINE-GREEN Not a life threatening injury or illness. <i>Ex: Sprains, strains, minor heat-related illness.</i>	Non-Emergency. Evacuation considered Routine of Convenience.

5. TRANSPORT PLAN:

Air Transport: (Agency Aircraft Preferred)

<input type="checkbox"/> Helispot	<input type="checkbox"/> Short-haul/Hoist	<input type="checkbox"/> Life Flight	<input type="checkbox"/> Other
-----------------------------------	---	--------------------------------------	--------------------------------

Ground Transport:

<input type="checkbox"/> Self-Extract	<input type="checkbox"/> Carry-Out	<input type="checkbox"/> Ambulance	<input type="checkbox"/> Other
---------------------------------------	------------------------------------	------------------------------------	--------------------------------

6. ADDITIONAL RESOURCE/EQUIPMENT NEEDS:

<input type="checkbox"/> Paramedic/EMT(s)	<input type="checkbox"/> Crew(s)	<input type="checkbox"/> SKED/Backboard/C-Collar
<input type="checkbox"/> Burn Sheet(s)	<input type="checkbox"/> Oxygen	<input type="checkbox"/> Trauma Bag
<input type="checkbox"/> Medication(s)	<input type="checkbox"/> IV/Fluid(s)	<input type="checkbox"/> Cardiac Monitor/AED
<input type="checkbox"/> Other (i.e. splints, rope rescue, wheeled litter)		

7. COMMUNICATIONS:

Function	Channel Name/Number	Receive (Rx)	Tone/NAC *	Transmit (Tx)	Tone/NAC *
<i>Ex: Command</i>	<i>Forest Rpt, Ch. 2</i>	<i>168.3250</i>	<i>110.9</i>	<i>171.4325</i>	<i>110.9</i>
COMMAND					
AIR-TO-GRND					
TACTICAL					

*(NAC for digital radio system)

8. EVACUATION LOCATION:

Lat/Long (Datum WGS84) <i>EX: N 40 42.45' x W 123 03.24'</i>
Patient's ETA to Evacuation Location:
Helispot/Extraction Size and Hazards:

9. CONTINGENCY:

Considerations: If primary options fail, what actions can be implemented in conjunction with primary evacuation method? Be thinking ahead...

REMEMBER: Confirm ETA's of resources ordered
Act according to your level of training
Be Alert. Keep Calm. Think Clearly. Act Decisively.