

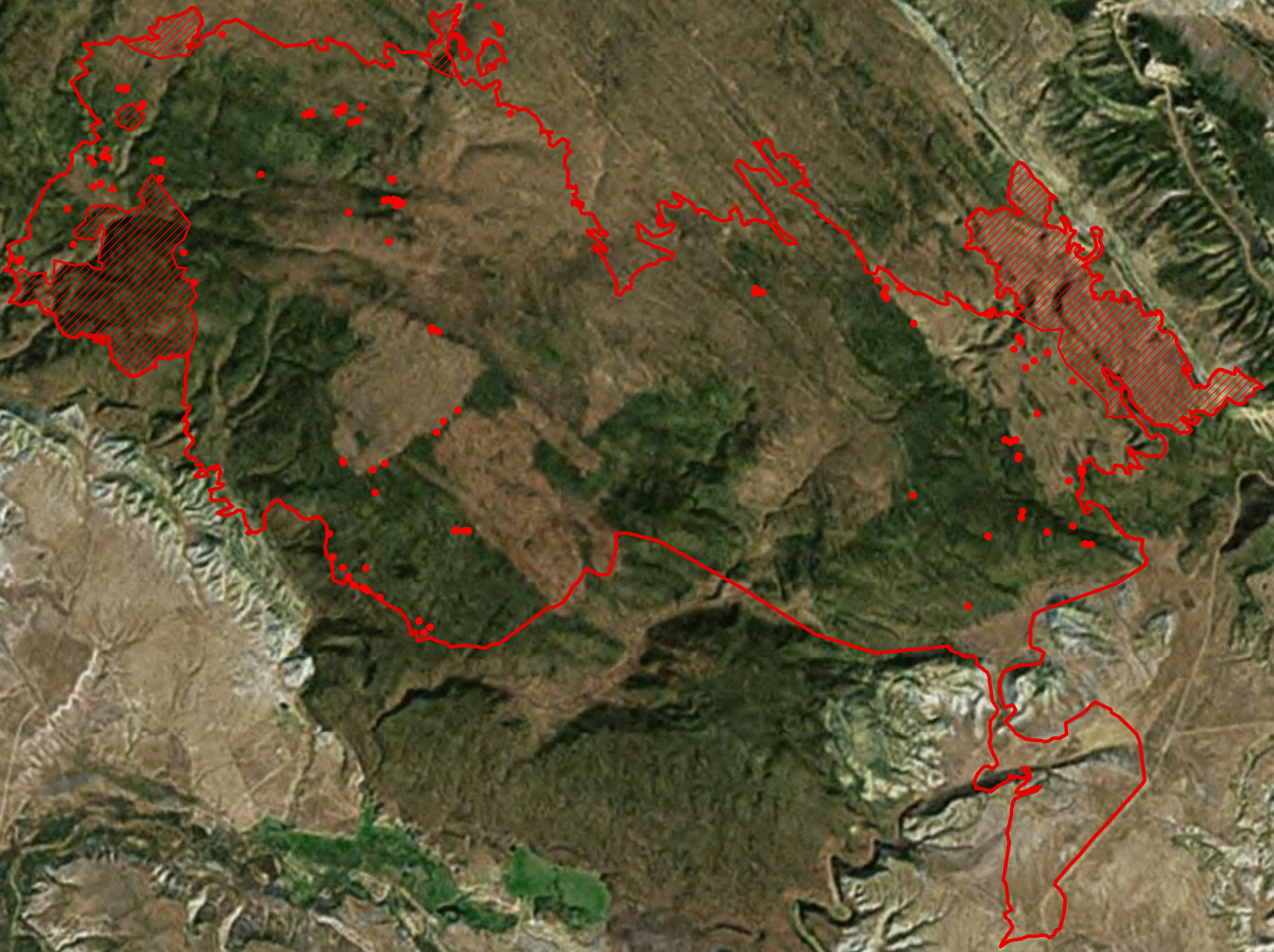
108°51'W 108°50'W 108°49'W 108°48'W 108°47'W 108°46'W 108°45'W 108°44'W 108°43'W

Peekaboo Fire
Heat Acres: 12,515
CO-LSD-152
Infrared Interpretation
Imagery Date:
2017/07/07 2210 Hrs






40°54'N
40°53'N
40°52'N
40°51'N
40°50'N
40°49'N
40°48'N
40°47'N
40°46'N
40°45'N
40°44'N
40°43'N

40°53'N
40°52'N
40°51'N
40°50'N
40°49'N
40°48'N
40°47'N
40°46'N
40°45'N
40°44'N
40°43'N
40°42'N



IRIN: K Felker
Map produced:
7/7/2017 2313 hrs

0 2,900 5,800 11,600 Feet

-  Heat Perimeter
-  Intense Heat Areas
-  Isolated Heat Sources

NAD 1983 UTM Zone 10N

Getmapping, Aerogrid, IGN, IGP, swisstopo, and the GIS User Community

108°54'W 108°53'W 108°52'W 108°51'W 108°50'W 108°49'W 108°48'W 108°47'W 108°46'W 108°45'W