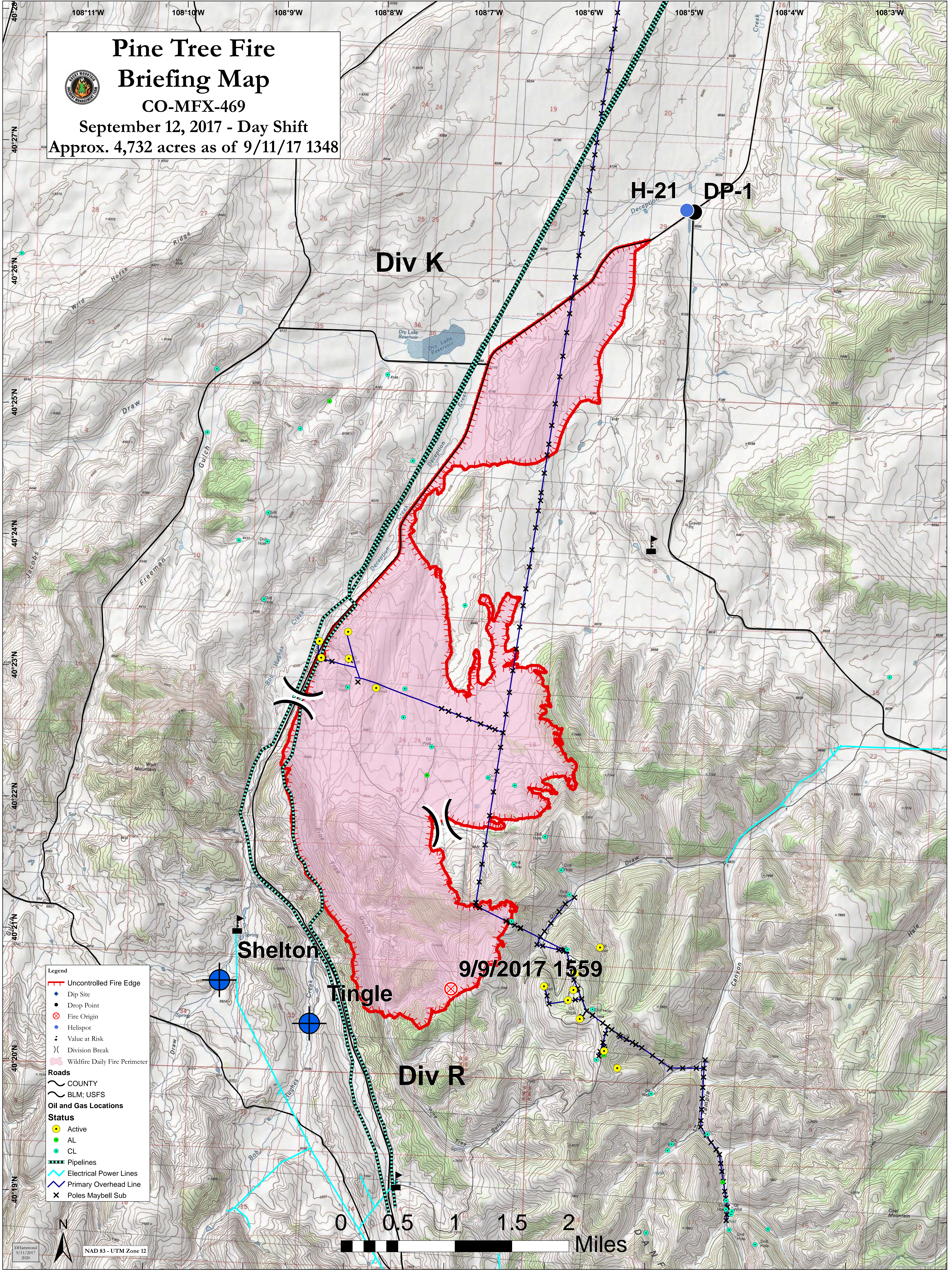


Pine Tree Fire Briefing Map

CO-MFX-469
 September 12, 2017 - Day Shift
 Approx. 4,732 acres as of 9/11/17 1348



- Legend**
- Uncontrolled Fire Edge
 - Dip Site
 - Drop Point
 - ⊗ Fire Origin
 - Helispot
 - ⋈ Value at Risk
 -) Division Break
 - Wildfire Daily Fire Perimeter
- Roads**
- COUNTY
 - BLM; USFS
- Oil and Gas Locations**
- Active
 - AL
 - CL
- Status**
- Pipelines
 - Electrical Power Lines
 - Primary Overhead Line
 - x Poles Maybell Sub

Shelton

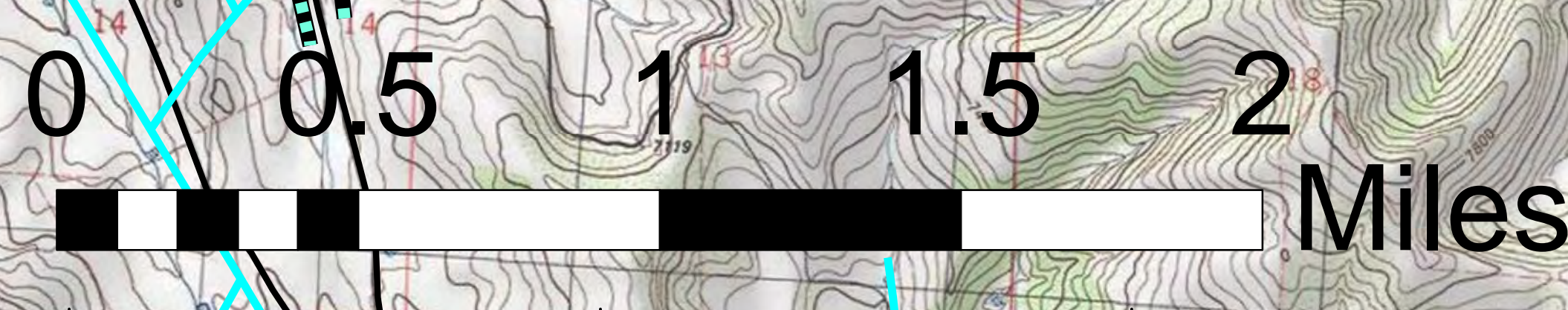
Tingle

Div R

H-21

DP-1

9/9/2017 1559



N
 NAD 83 - UTM Zone 12