

PINE TREE FIRE

CO- RTX-000456

September 12, 2017

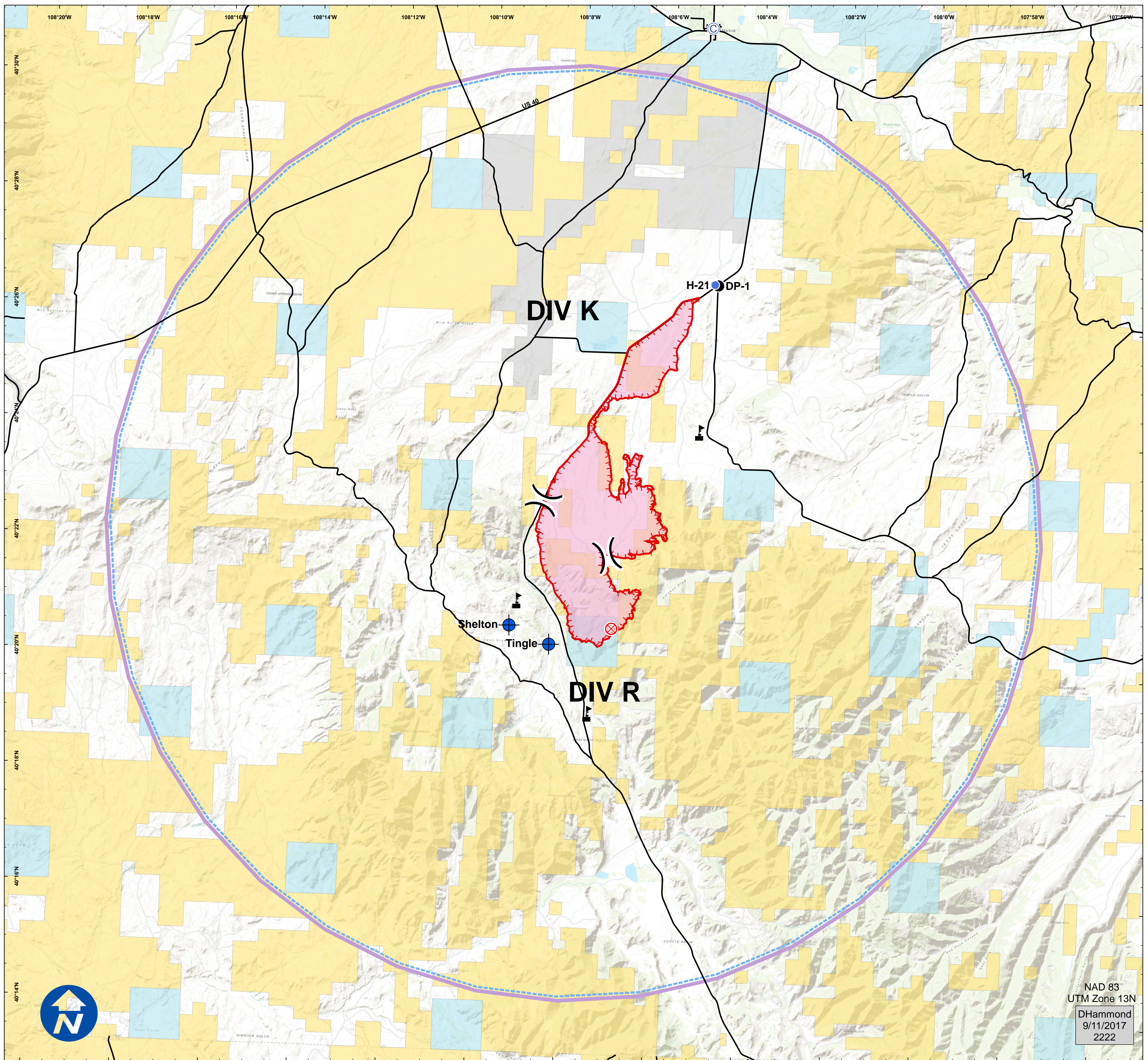
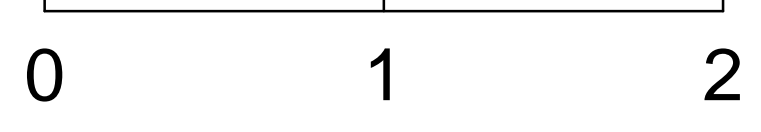
Day Shift

AIR OPS MAP

- ⊙ Camp
- ◆ Dip Site
- Drop Point
- ⊗ Fire Origin
- Helispot
- ⋮ Value at Risk
-) (Division Break
- Uncontrolled Fire Edge
- Streets/Roads
- Surface Mgmt**
- BLM
- Local
- NPS
- Private
- State
- Wildfire Daily Fire Perimeter

Feature	Name	Latitude	Longitude
Drop Point	DP-1	N40° 26.635'	W108° 4.870'
Dip Site	Shelton	N40° 20.658'	W108° 9.335'
Dip Site	Tingle	N40° 20.351'	W108° 8.425'
Helispot	H-21	N40° 26.647'	W108° 4.947'
Camp	Spike	N40° 31.073'	W108° 5.193'

Nautical Miles



NAD 83
UTM Zone 13N
DHammond
9/11/2017
2222