

# PINE TREE FIRE

CO- MFX-000456

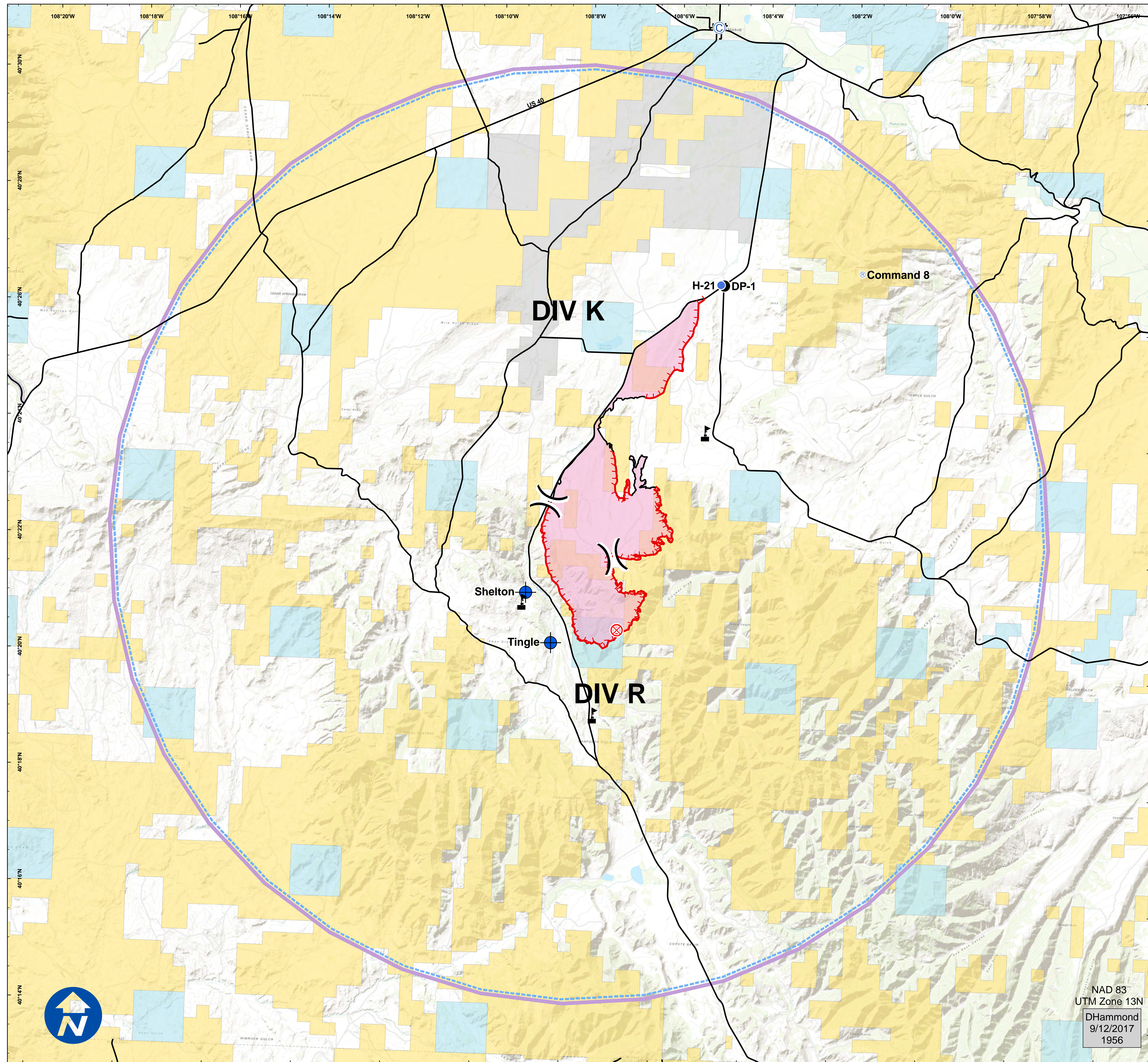
September 13, 2017

Day Shift

## AIR OPS MAP

- ⊙ Camp
- ◆ Dip Site
- Drop Point
- ⊗ Fire Origin
- Helispot
- ⊙ Repeater
- ⚠ Value at Risk
- ) ( Division Break
- Uncontrolled Fire Edge
- Completed Line
- Streets/Roads
- Surface Mgmt**
- BLM
- Local
- NPS
- Private
- State
- Wildfire Daily Fire Perimeter

Feature	Name	Latitude	Longitude
Drop Point	DP-1	40° 26.635' N	108° 4.870' W
Dip Site	Shelton	40° 20.658' N	108° 9.335' W
Dip Site	Tingle	40° 20.351' N	108° 8.425' W
Helispot	H-21	40° 26.647' N	108° 4.947' W
Camp	Spike	40° 31.073' N	108° 5.193' W
Repeater	Command 8	40° 26.913' N	108° 1.771' W



Nautical Miles

0 1 2



NAD 83  
UTM Zone 13N  
DHammond  
9/12/2017  
1956