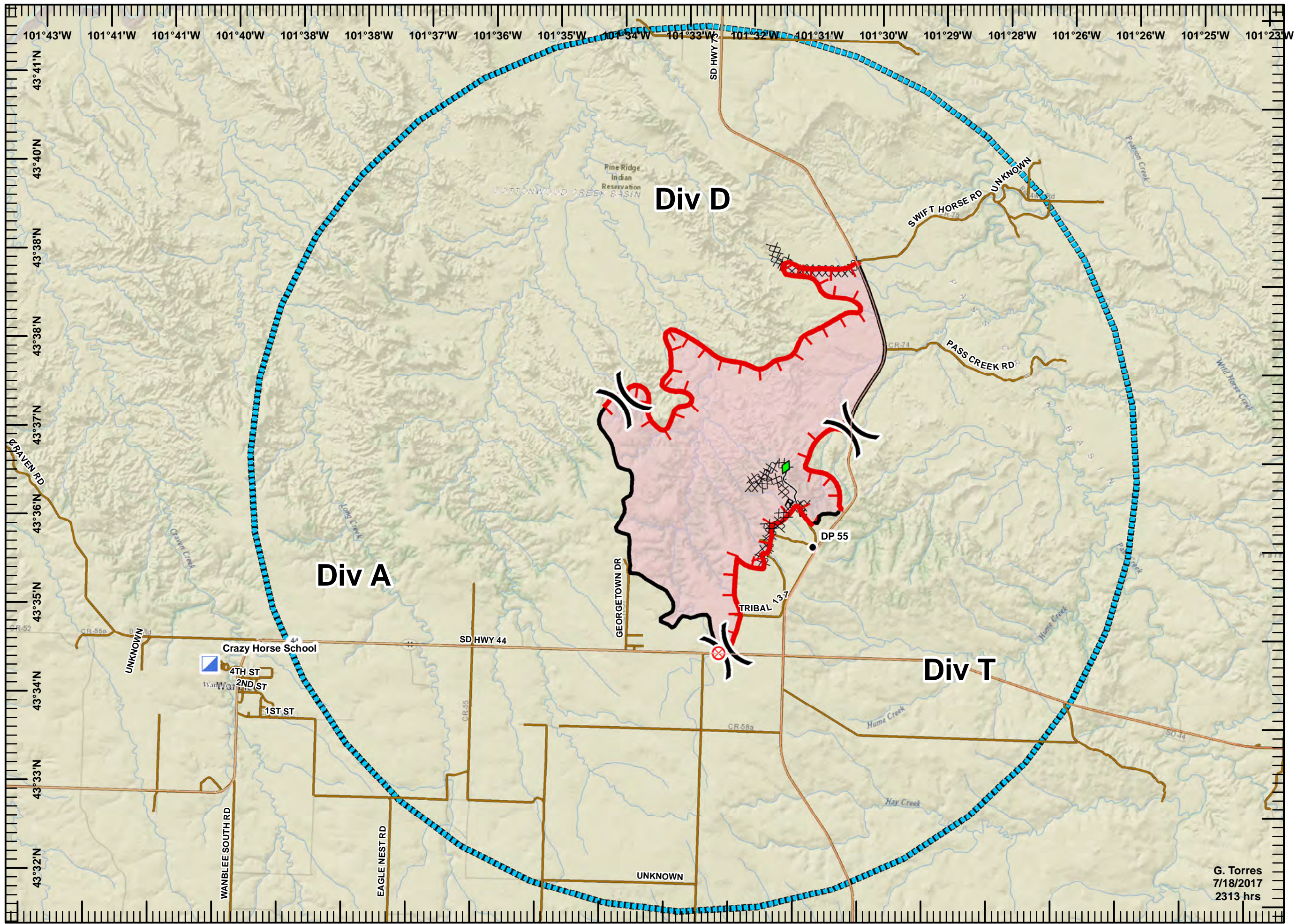


Wanblee Timber Fire
SD-PRA-170500
Air Operations
July 19, 2017
 5,305 Acres Helicopter Flight 7/18/17
 50% Containment

- Drop Point
- ⊗ Fire Origin
- ▣ Incident Command Post
-) (Division Break
- ▬ Uncontrolled Fire Edge
- ▬ Completed Line
- ▨ Completed Dozer Line
- R - R Road as Completed Line
- ◆ Completed Mow Line
- ▤ TFR: 7_2361
- Roads



A north arrow is located in the bottom left corner, pointing towards the top of the map. Below it is a scale bar labeled 'Miles' with markings for 0, 1, and 2 miles.

G. Torres
 7/18/2017
 2313 hrs