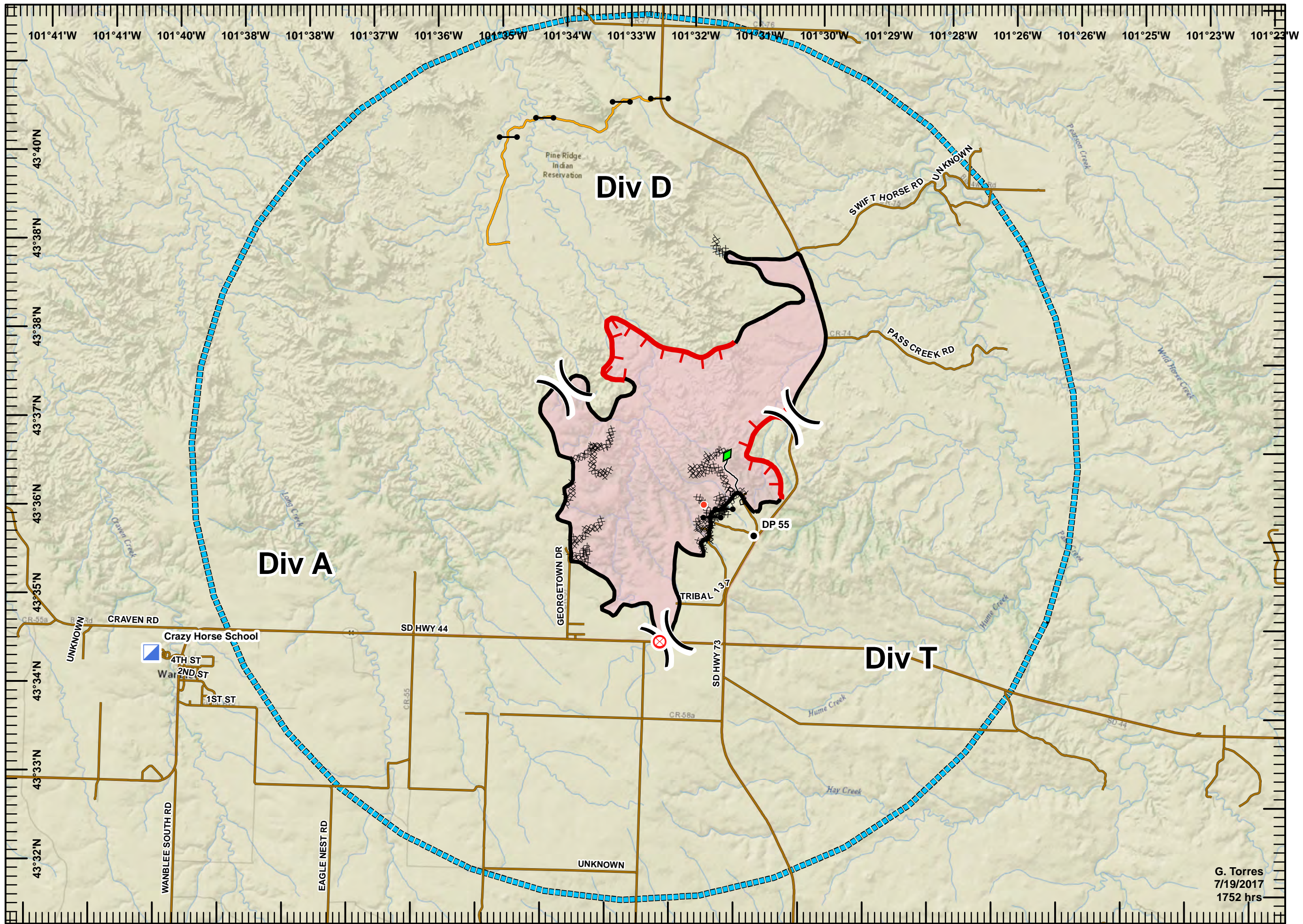
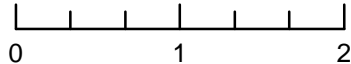


Wanblee Timber Fire
SD-PRA-170500
Air Operations
July 20-22, 2017
 5,305 Acres Helicopter Flight 7/18/17
 78% Containment

- Drop Point
- ⊗ Fire Origin
- Gate
- Hot Spot
- ▣ Incident Command Post
-) (Division Break
- ▬ Uncontrolled Fire Edge
- ▬ Completed Line
- ▬ Completed Dozer Line
- R - R Road as Completed Line
- ◆ Completed Mow Line
- ▬ Access Route
- ▬ TFR: 7_2361
- ▬ Roads



Miles



G. Torres
 7/19/2017
 1752 hrs