

107°56'W 107°55'W 107°54'W 107°53'W 107°52'W 107°51'W 107°50'W

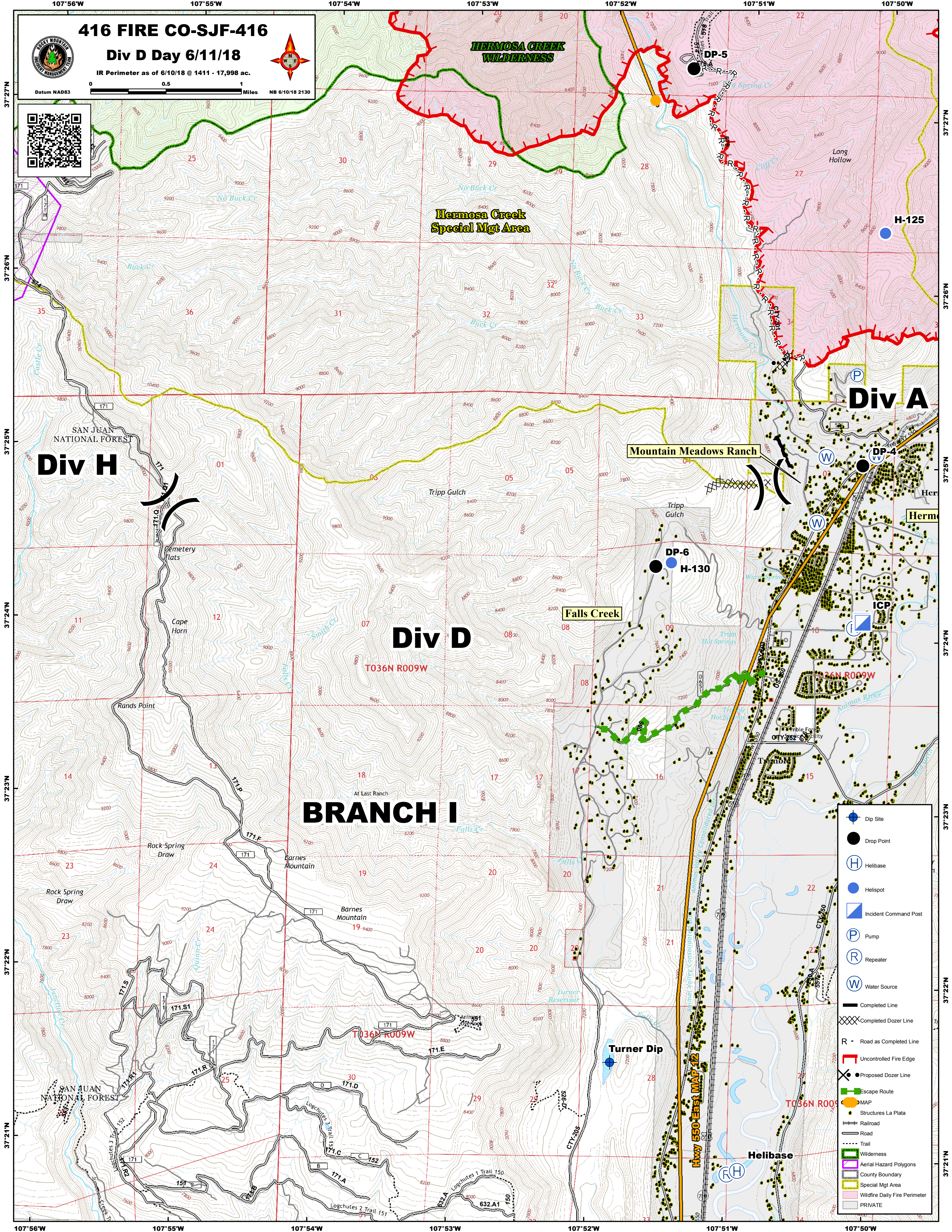
416 FIRE CO-SJF-416

Div D Day 6/11/18

IR Perimeter as of 6/10/18 @ 1411 - 17,998 ac.



Datum NAD83 0 0.5 1 Miles NB 6/10/18 2130



Div H

Div D

Div A

BRANCH I

HERMOSA CREEK WILDERNESS

Hermosa Creek Special Mgt Area

Mountain Meadows Ranch

Falls Creek

Turner Dip

Helibase

- Dip Site
- Drop Point
- Helibase
- Helispot
- Incident Command Post
- Pump
- Repeater
- Water Source
- Completed Line
- Completed Dozer Line
- Road as Completed Line
- Uncontrolled Fire Edge
- Proposed Dozer Line
- Escape Route
- MAP
- Structures La Plata
- Railroad
- Road
- Trail
- Wilderness
- Aerial Hazard Polygons
- County Boundary
- Special Mgt Area
- Wildfire Daily Fire Perimeter
- PRIVATE

107°56'W 107°55'W 107°54'W 107°53'W 107°52'W 107°51'W 107°50'W