

108°0'W 107°59'W 107°58'W 107°57'W 107°56'W 107°55'W 107°54'W 107°53'W 107°52'W 107°51'W

416 FIRE CO-SJF-416
Div H Day 6/11/18
 IR Perimeter as of 6/10/18 @ 1411 - 17,998 ac.
 Datum NAD83 0 0.5 1 1.5 Miles NB 6/10/18 2130

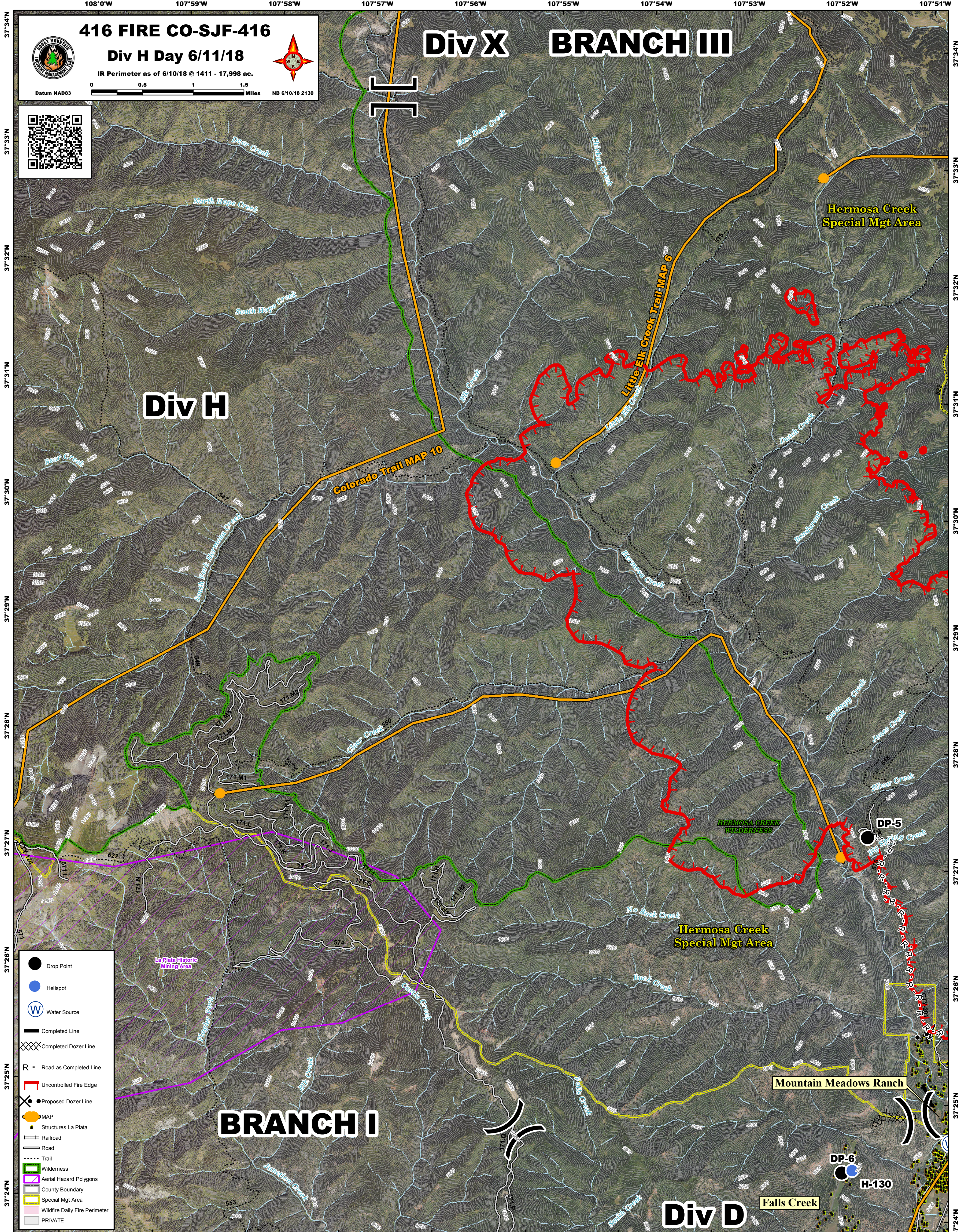


Div X BRANCH III

Div H

BRANCH I

Div D



- Drop Point
- Helispot
- W Water Source
- Completed Line
- ⊗ Completed Dozer Line
- R - Road as Completed Line
- Uncontrolled Fire Edge
- ⊗ Proposed Dozer Line
- MAP
- Structures La Plata
- Railroad
- Road
- ⋯ Trail
- Wilderness
- Aerial Hazard Polygons
- County Boundary
- Special Mgt Area
- Wildfire Daily Fire Perimeter
- PRIVATE

108°0'W 107°59'W 107°58'W 107°57'W 107°56'W 107°55'W 107°54'W 107°53'W 107°52'W 107°51'W

37°34'N
37°33'N
37°32'N
37°31'N
37°30'N
37°29'N
37°28'N
37°27'N
37°26'N
37°25'N
37°24'N

37°34'N
37°33'N
37°32'N
37°31'N
37°30'N
37°29'N
37°28'N
37°27'N
37°26'N
37°25'N
37°24'N