

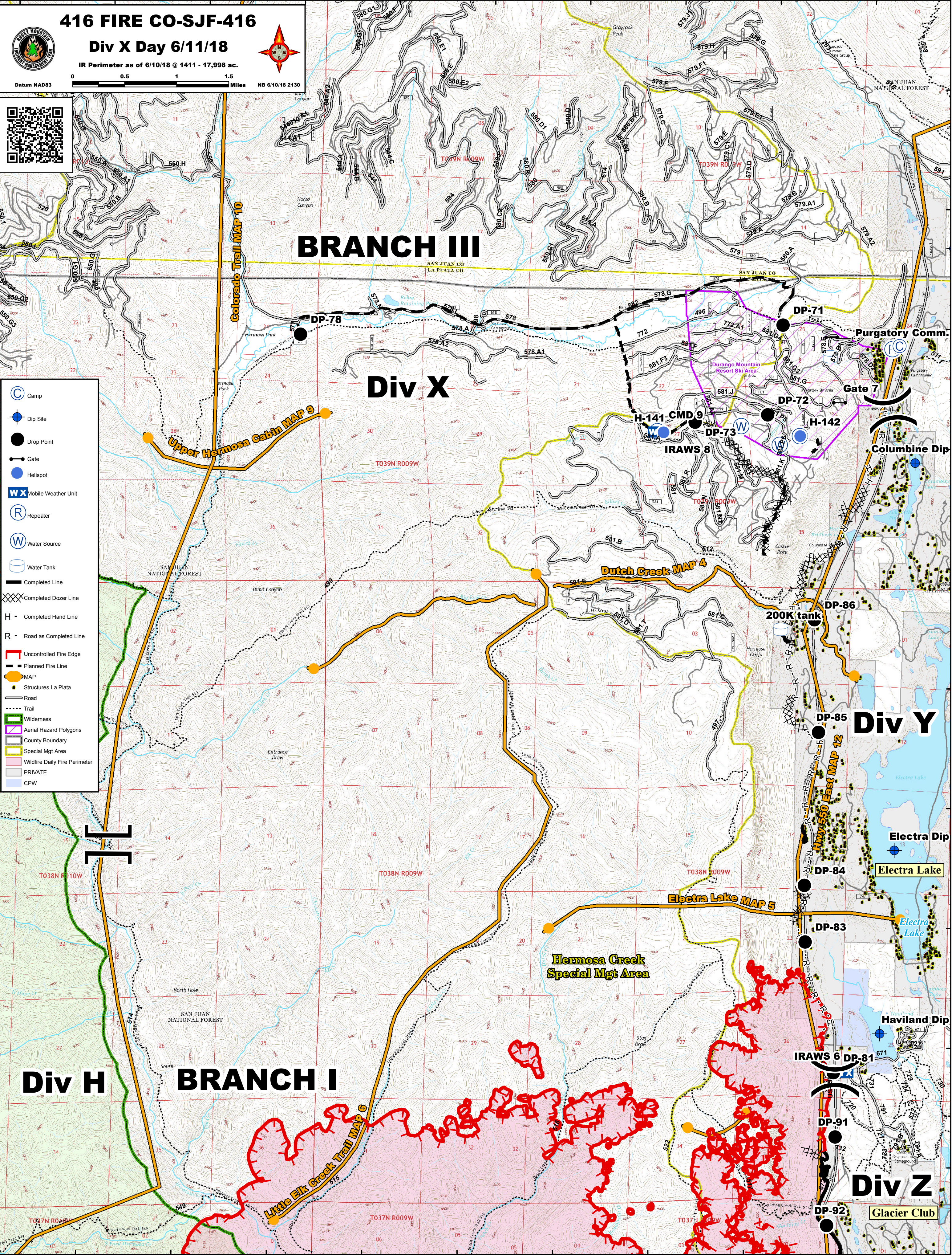


107°58'W 107°57'W 107°56'W 107°55'W 107°54'W 107°53'W 107°52'W 107°51'W 107°50'W 107°49'W

416 FIRE CO-SJF-416
Div X Day 6/11/18
 IR Perimeter as of 6/10/18 @ 1411 - 17,998 ac.
 Datum NAD83 0 0.5 1 1.5 Miles NB 6/10/18 2130

- Camp
- Dip Site
- Drop Point
- Gate
- Helispot
- Mobile Weather Unit
- Repeater
- Water Source
- Water Tank
- Completed Line
- Completed Dozer Line
- Completed Hand Line
- Road as Completed Line
- Uncontrolled Fire Edge
- Planned Fire Line
- MAP
- Structures La Plata
- Road
- Trail
- Wilderness
- Aerial Hazard Polygons
- County Boundary
- Special Mgt Area
- Wildfire Daily Fire Perimeter
- PRIVATE
- CPW

107°57'W 107°56'W 107°55'W 107°54'W 107°53'W 107°52'W 107°51'W 107°50'W 107°49'W