

107°53'W

107°52'W

107°51'W

107°50'W

107°49'W

107°48'W

416 FIRE CO-SJF-416

Div A Day 6/13/18

MMA Perimeter as of 6/12/18 @ 1601 - 25,905 ac.

Datum NAD83

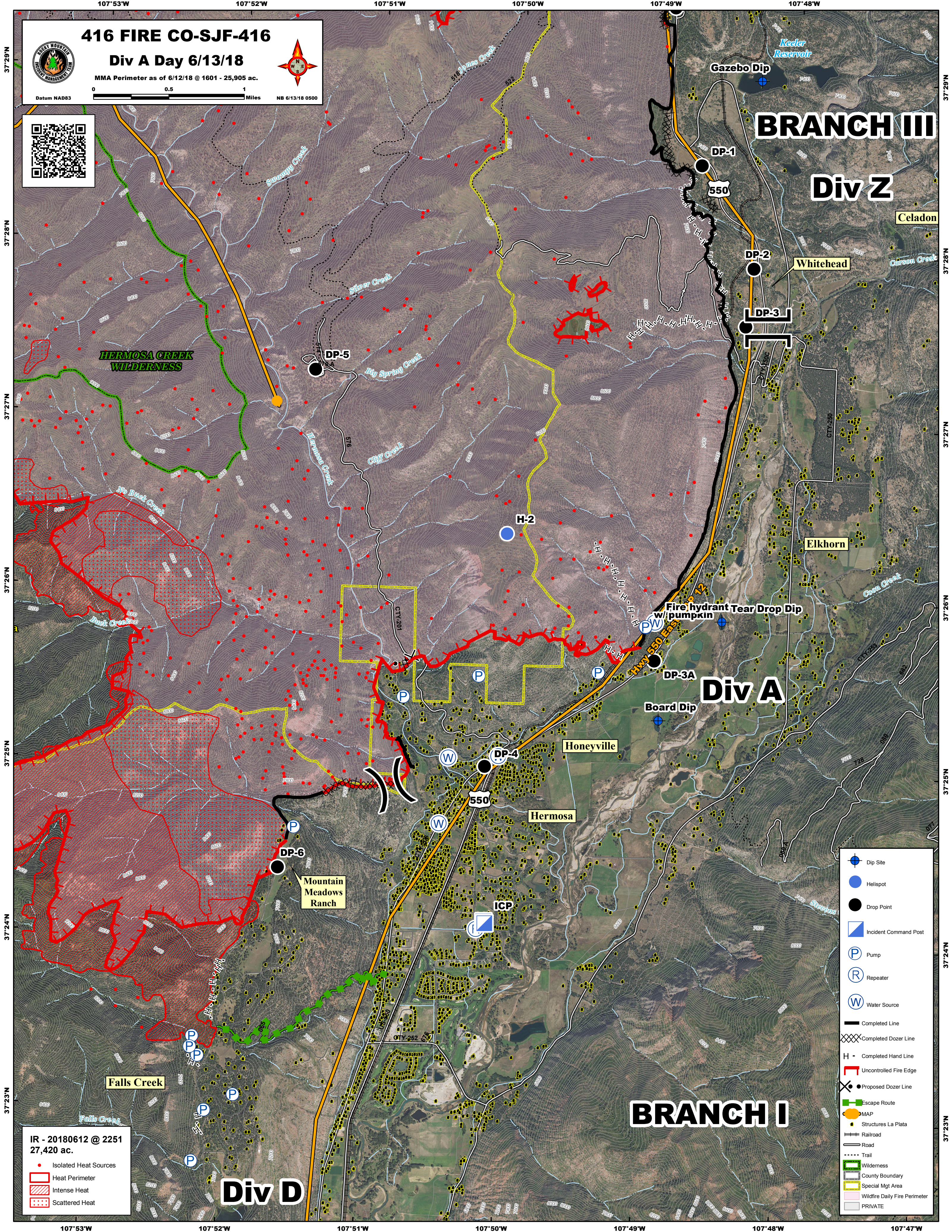
Miles

NB 6/13/18 0500



BRANCH III

Div Z



Celadon

Whitehead

HERMOSA CREEK WILDERNESS

Elkhorn

Div A

Honeyville

Hermosa

Falls Creek

BRANCH I

IR - 20180612 @ 2251
27,420 ac.

- Isolated Heat Sources
- Heat Perimeter
- Intense Heat
- Scattered Heat

Div D

- Dip Site
- Helispot
- Drop Point
- Incident Command Post
- Pump
- Repeater
- Water Source
- Completed Line
- Completed Dozer Line
- Completed Hand Line
- Uncontrolled Fire Edge
- Proposed Dozer Line
- Escape Route
- IMAP
- Structures La Plata
- Railroad
- Road
- Trail
- Wilderness
- County Boundary
- Special Mgt Area
- Wildfire Daily Fire Perimeter
- PRIVATE

37°29'N
37°28'N
37°27'N
37°26'N
37°25'N
37°24'N
37°23'N

37°29'N
37°28'N
37°27'N
37°26'N
37°25'N
37°24'N
37°23'N

107°53'W 107°52'W 107°51'W 107°50'W 107°49'W 107°48'W 107°47'W